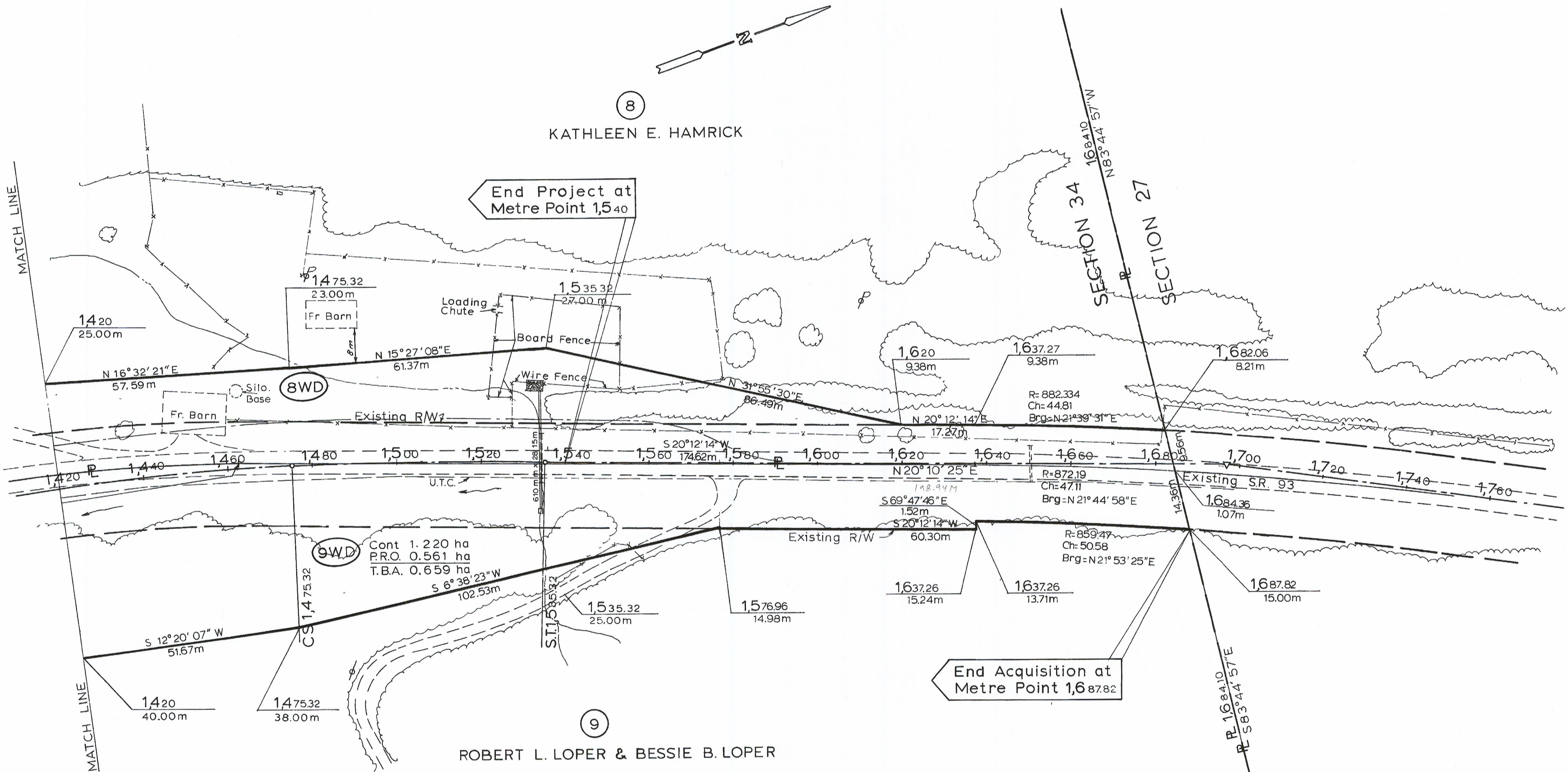


SCALE $\frac{1}{500}$
 All measurements in Metric
 1 metre = 3.28083 feet
 Areas are shown in hectares "ha"
 1 hectare = 10,000 sq. metres or
 2.471 acres

HOC-93-0,220 76
 76

R/W PLANS



End Project at
 Metre Point 1,540

End Acquisition at
 Metre Point 1,687.82

HOC -93-0,2 20	
DATE	DRAWN BY
REVISIONS	
5 13 74	Added board fence left of 1,540 O.D.S.
JOB NO. 10944(0)	8
TYPE FUND STATE	8

WASHINGTON TWP, SECTIONS 27 & 34, T13N, R17W

R/W PLAN STA. 1,420 TO STA. 1,760