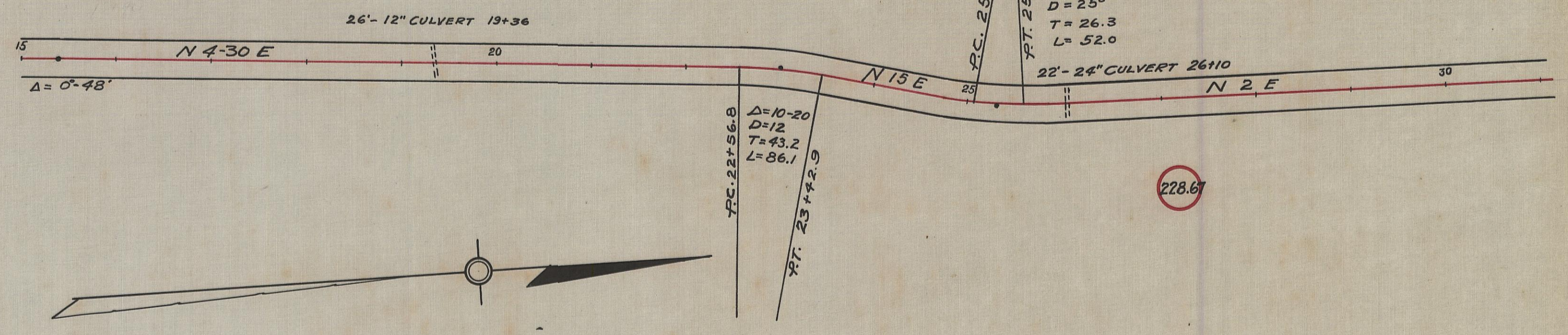
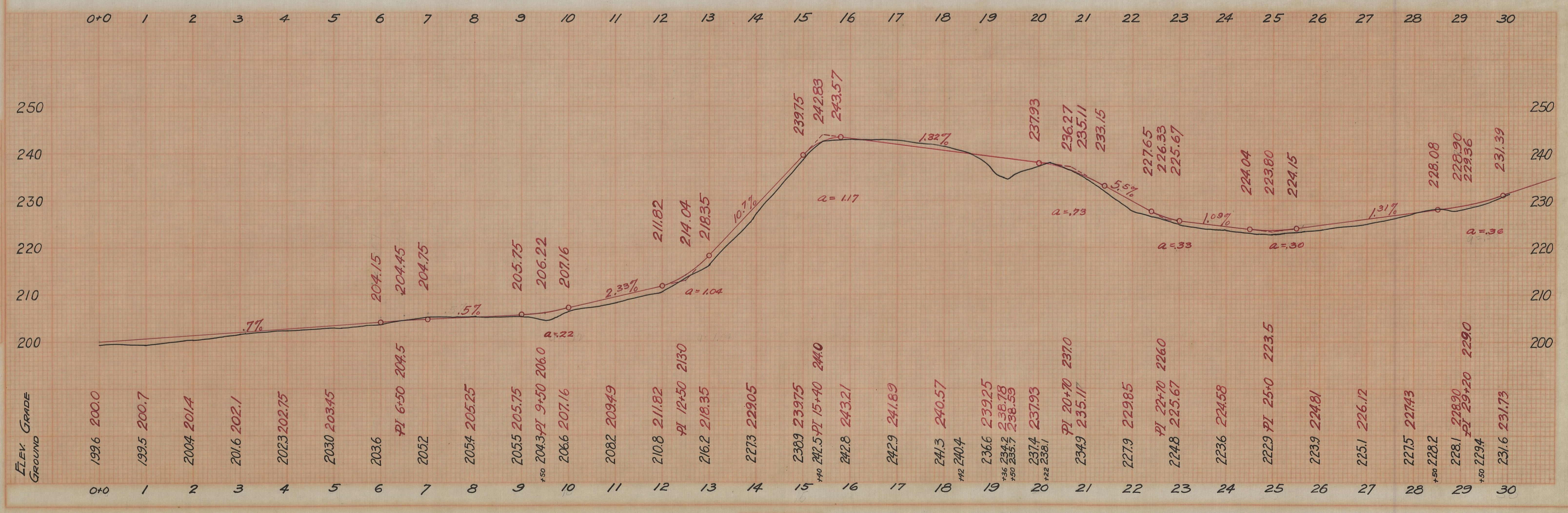


B.M. Two spikes in Tel. Pole.
El. 200.0

B.M. Spike in root of Beech Tree
El. 208.0



B.M. Spikes in root of 30" Oak Tree
100 ft. right of 27+0
El. 228.67



PLAN
DATE
BY
CHECKED
APPROVED

PROFILE
DATE
BY
CHECKED
APPROVED

PE 19, 20
UNION RD