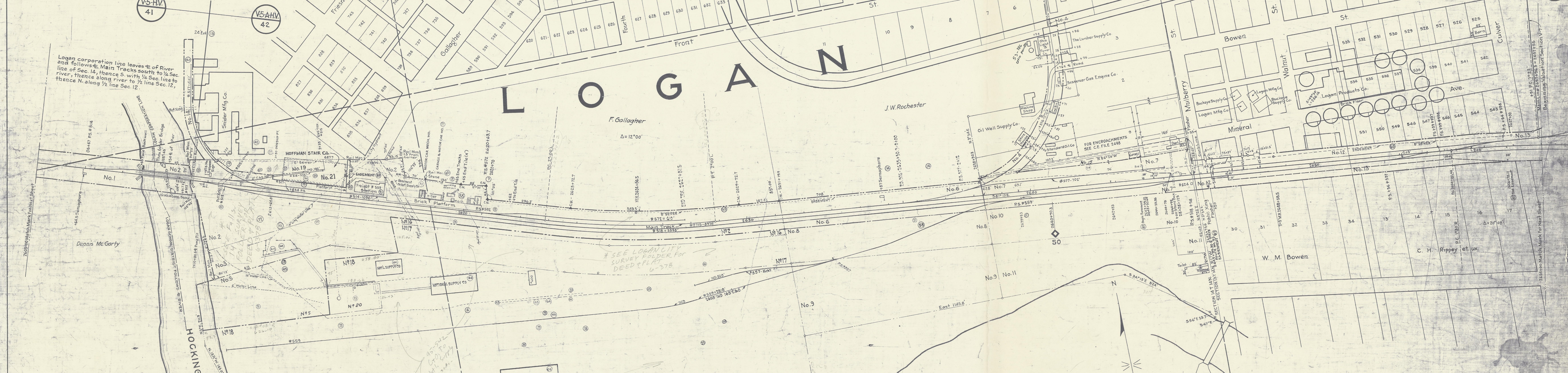


NO.	REVISION	REFERENCE	DATE PLOTTED	A.F.E.	BY
54	T RAIL MONUMENTS SET	DE FILE 2498	5-2-50		H.V.
55	Retire Bldg # 554	V-18-50	11-15-50	20520	H.V.
56	Retire Motor Car Bldg. No. 554	V-18-50	11-15-50	20520	H.V.
57	Erect Garage Motor Car Bldg. 1587	V-18-50	11-15-50	20520	H.V.
58	Relocate Bldg. # 554	V-18-50	11-15-50	20520	H.V.
59	Relocate Bldg. # 554	V-18-50	11-15-50	20520	H.V.
60	Relocate Bldg. # 554	V-18-50	11-15-50	20520	H.V.
61	Relocate Bldg. # 554	V-18-50	11-15-50	20520	H.V.
62	Relocate Bldg. # 554	V-18-50	11-15-50	20520	H.V.
63	Relocate Bldg. # 554	V-18-50	11-15-50	20520	H.V.
64	Relocate Bldg. # 554	V-18-50	11-15-50	20520	H.V.
65	Relocate Bldg. # 554	V-18-50	11-15-50	20520	H.V.
66	Relocate Bldg. # 554	V-18-50	11-15-50	20520	H.V.
67	Relocate Bldg. # 554	V-18-50	11-15-50	20520	H.V.
68	Relocate Bldg. # 554	V-18-50	11-15-50	20520	H.V.
69	Relocate Bldg. # 554	V-18-50	11-15-50	20520	H.V.
70	Relocate Bldg. # 554	V-18-50	11-15-50	20520	H.V.
71	Relocate Bldg. # 554	V-18-50	11-15-50	20520	H.V.
72	Relocate Bldg. # 554	V-18-50	11-15-50	20520	H.V.
73	Relocate Bldg. # 554	V-18-50	11-15-50	20520	H.V.
74	Relocate Bldg. # 554	V-18-50	11-15-50	20520	H.V.
75	Relocate Bldg. # 554	V-18-50	11-15-50	20520	H.V.
76	Relocate Bldg. # 554	V-18-50	11-15-50	20520	H.V.
77	Relocate Bldg. # 554	V-18-50	11-15-50	20520	H.V.
78	Relocate Bldg. # 554	V-18-50	11-15-50	20520	H.V.
79	Relocate Bldg. # 554	V-18-50	11-15-50	20520	H.V.
80	Relocate Bldg. # 554	V-18-50	11-15-50	20520	H.V.
81	Relocate Bldg. # 554	V-18-50	11-15-50	20520	H.V.
82	Relocate Bldg. # 554	V-18-50	11-15-50	20520	H.V.
83	Relocate Bldg. # 554	V-18-50	11-15-50	20520	H.V.
84	Relocate Bldg. # 554	V-18-50	11-15-50	20520	H.V.
85	Relocate Bldg. # 554	V-18-50	11-15-50	20520	H.V.
86	Relocate Bldg. # 554	V-18-50	11-15-50	20520	H.V.
87	Relocate Bldg. # 554	V-18-50	11-15-50	20520	H.V.
88	Relocate Bldg. # 554	V-18-50	11-15-50	20520	H.V.
89	Relocate Bldg. # 554	V-18-50	11-15-50	20520	H.V.
90	Relocate Bldg. # 554	V-18-50	11-15-50	20520	H.V.
91	Relocate Bldg. # 554	V-18-50	11-15-50	20520	H.V.
92	Relocate Bldg. # 554	V-18-50	11-15-50	20520	H.V.
93	Relocate Bldg. # 554	V-18-50	11-15-50	20520	H.V.
94	Relocate Bldg. # 554	V-18-50	11-15-50	20520	H.V.
95	Relocate Bldg. # 554	V-18-50	11-15-50	20520	H.V.
96	Relocate Bldg. # 554	V-18-50	11-15-50	20520	H.V.
97	Relocate Bldg. # 554	V-18-50	11-15-50	20520	H.V.
98	Relocate Bldg. # 554	V-18-50	11-15-50	20520	H.V.
99	Relocate Bldg. # 554	V-18-50	11-15-50	20520	H.V.
100	Relocate Bldg. # 554	V-18-50	11-15-50	20520	H.V.



NO.	REVISION	REFERENCE	DATE PLOTTED	A.F.E.	BY
1	Water Station Sta. 2611+13.4	WS 507-D-2	10-21-32	4146	A.S.R.
2	Retire Bldgs # 592, #593, #601 & 612	C.E. # 6724	10-24-32	9120	A.S.R.
3	Point of Stencil Storage Bldg #154	C.E. #11441	11-7-32	3488-54	E.W.N.
4	Carpenier Shop # 623 Retired	C.E. # 7243	11-7-32	4093-54	E.W.N.
5	Track Change & W.C. Show	C.E. # 11746	4-18-33	1264-54	B.O.W.
6	Building # 597 Retired	V-18 Form 2/34	3-16-34	9365	B.O.W.
7	Building # 564 Retired	V-18 Form 8/34	10-18-34	-	B.O.W.
8	Building # 588 Relocated	V-18 Form 4/36	6-28-36	-	B.O.W.
9	Encroachments by C. Comp. et al.	C.E. File 2498	7-7-36	-	C.V.L.
10	Bldg # 588 Retired	Ret. V-18-756	8-15-36	11459	B.O.W.
11	As Built & Extension to Bldg # 1122	C.E. # 12145-A	11-26-36	11459	C.V.L.
12	Bldg 588 Retired	V-18-8/36	2-4-36	-	B.O.W.
13	Trk # 121734 Extended for Tidon Glow Mfg Co.	C.E. # 121734	8-12-37	-	E.F.S.
14	Buildings # 11 & 620 Retired	C.E. # X-8573	2-12-38	12063	E.W.N.
15	Building # 558 Retired	C.E. # X-8551	2-16-38	12064	D.E.R.
16	Shop Face & Trk's Retired	C.E. # 12145-A	3-24-38	11459	D.L.A.
17	Portion of Pass Sta. Platform Retired	C.E. # X-8644	9-26-38	13185	D.E.R.
18	Road Crossings	Field Check 1938	5-29-39	-	D.L.A.
19	W.B. Water Column Retired	WS. Draw 10/29/34	6-26-39	13710	F.A.O.
20	Relocate Bldg # 1062	V-18 11/38	12-5-39	-	D.L.A.
21	Relocate Bldg # 618, 619, & 620	V-18 7/39	12-5-39	-	D.L.A.
22	Platform between tracks # 518 & 516	V-18 4/39	4-22-40	-	F.A.O.
23	Install Water Tank Restor	WS 2061-D-4	12-24-40	13365	D.L.A.
24	Remove Water Tank Restor	WS 2061-D-4	3-9-41	13365	D.L.A.

RIGHT OF WAY AND TRACK MAP
 THE CHESAPEAKE AND OHIO RAILWAY COMPANY
 HOCKING DIVISION
 STATION 2605+00 to STATION 2658+00
 SCALE: 1 INCH = 100 FEET. NOV. 25, 1947
 Office of Chief Engineer,
 Richmond, Virginia.