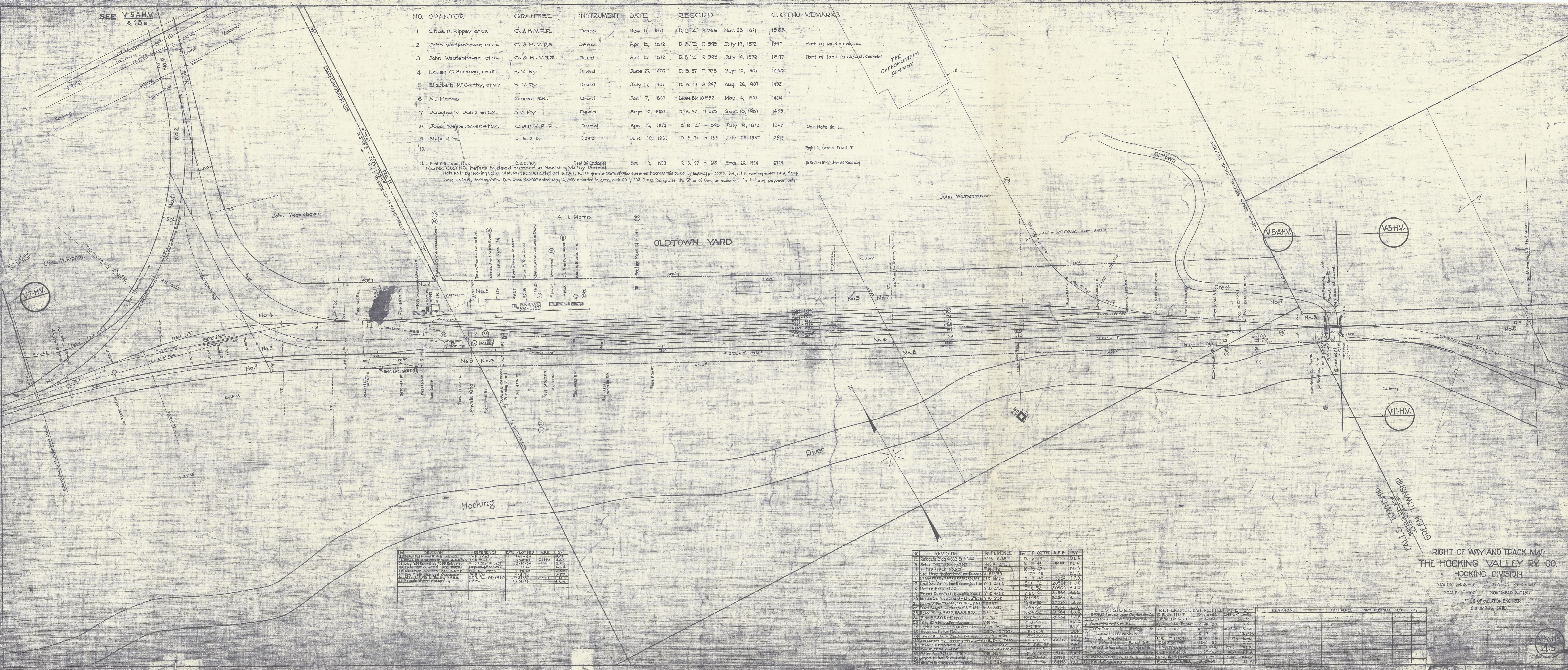


NO.	GRANTOR	GRANTEE	INSTRUMENT	DATE	RECORD	CUSTNO.	REMARKS
1	Chas. H. Rippey, et ux.	C. & H. V.R.R.	Deed	Nov. 17, 1871	D. B. "Z" R. 266	Nov. 23, 1871	1383
2	John Westenhaven, et ux.	C. & H. V.R.R.	Deed	Apr. 15, 1872	D. B. "Z" R. 595	July 19, 1872	1397
3	John Westenhaven, et ux.	C. & H. V.R.R.	Deed	Apr. 15, 1872	D. B. "Z" R. 595	July 19, 1872	1397
4	Louisa C. Hartman, et al.	H. V. Ry.	Deed	June 27, 1907	D. B. 37 R. 323	Sept. 10, 1907	1450
5	Elizabeth McCarthy, et vir.	H. V. Ry.	Deed	July 17, 1907	D. B. 37 R. 297	Aug. 26, 1907	1452
6	A. J. Morris	Mineral RR.	Grant	Jan. 7, 1867	Loose Bk. 10 P. 52	May 4, 1907	1454
7	Douglas John, et ux.	H. V. Ry.	Deed	Sept. 10, 1907	D. B. 37 R. 325	Sept. 10, 1907	1455
8	John Westenhaven, et ux.	C. & H. V.R.R.	Deed	Apr. 15, 1872	D. B. "Z" R. 595	July 19, 1872	1397
9	State of Ohio	C. & O. Ry.	Deed	June 30, 1937	D. B. 74 p. 153	July 28, 1937	2519
10							Right to cross Front St.

11. Fred P. Graham, et ux. C. & O. Ry. Deed of Exchange Nov. 7, 1953 D. B. 99 p. 245 March 26, 1954 2724 To Revert if Not Used As Roadway.  
 Note: "CUSTNO." refers to deed number in Hocking Valley District.  
 Note No. 1 - By Hocking Valley Dist. Deed No. 2901 dated Oct. 6, 1967, Ry. Co. grants State of Ohio easement across this parcel for highway purposes. Subject to existing easements, if any.  
 Note No. 2 - By Hocking Valley Dist. Deed No. 2907 dated May 16, 1968, recorded in deed book 69 p. 232, C. & O. Ry. grants the State of Ohio an easement for highway purposes only.



NO.	REVISION	REFERENCE	DATE PLOTTED	A.F.E.	BY
1	Locate Blk. # 633 & # 634	V-16 6/36	12-5-39		D.L.A.
2	Relocate Blk. # 633 & # 634	V-16 6/36	12-5-39		D.L.A.
3	Relocate Blk. # 633 & # 634	V-16 6/36	12-5-39		D.L.A.
4	Relocate Blk. # 633 & # 634	V-16 6/36	12-5-39		D.L.A.
5	Relocate Blk. # 633 & # 634	V-16 6/36	12-5-39		D.L.A.
6	Relocate Blk. # 633 & # 634	V-16 6/36	12-5-39		D.L.A.
7	Relocate Blk. # 633 & # 634	V-16 6/36	12-5-39		D.L.A.
8	Relocate Blk. # 633 & # 634	V-16 6/36	12-5-39		D.L.A.
9	Relocate Blk. # 633 & # 634	V-16 6/36	12-5-39		D.L.A.
10	Relocate Blk. # 633 & # 634	V-16 6/36	12-5-39		D.L.A.
11	Relocate Blk. # 633 & # 634	V-16 6/36	12-5-39		D.L.A.
12	Relocate Blk. # 633 & # 634	V-16 6/36	12-5-39		D.L.A.
13	Relocate Blk. # 633 & # 634	V-16 6/36	12-5-39		D.L.A.
14	Relocate Blk. # 633 & # 634	V-16 6/36	12-5-39		D.L.A.
15	Relocate Blk. # 633 & # 634	V-16 6/36	12-5-39		D.L.A.
16	Relocate Blk. # 633 & # 634	V-16 6/36	12-5-39		D.L.A.
17	Relocate Blk. # 633 & # 634	V-16 6/36	12-5-39		D.L.A.
18	Relocate Blk. # 633 & # 634	V-16 6/36	12-5-39		D.L.A.
19	Relocate Blk. # 633 & # 634	V-16 6/36	12-5-39		D.L.A.
20	Relocate Blk. # 633 & # 634	V-16 6/36	12-5-39		D.L.A.
21	Relocate Blk. # 633 & # 634	V-16 6/36	12-5-39		D.L.A.
22	Relocate Blk. # 633 & # 634	V-16 6/36	12-5-39		D.L.A.
23	Relocate Blk. # 633 & # 634	V-16 6/36	12-5-39		D.L.A.
24	Relocate Blk. # 633 & # 634	V-16 6/36	12-5-39		D.L.A.
25	Relocate Blk. # 633 & # 634	V-16 6/36	12-5-39		D.L.A.
26	Relocate Blk. # 633 & # 634	V-16 6/36	12-5-39		D.L.A.
27	Relocate Blk. # 633 & # 634	V-16 6/36	12-5-39		D.L.A.
28	Relocate Blk. # 633 & # 634	V-16 6/36	12-5-39		D.L.A.
29	Relocate Blk. # 633 & # 634	V-16 6/36	12-5-39		D.L.A.
30	Relocate Blk. # 633 & # 634	V-16 6/36	12-5-39		D.L.A.
31	Relocate Blk. # 633 & # 634	V-16 6/36	12-5-39		D.L.A.
32	Relocate Blk. # 633 & # 634	V-16 6/36	12-5-39		D.L.A.
33	Relocate Blk. # 633 & # 634	V-16 6/36	12-5-39		D.L.A.
34	Relocate Blk. # 633 & # 634	V-16 6/36	12-5-39		D.L.A.

NO.	REVISION	REFERENCE	DATE PLOTTED	A.F.E.	BY
1	Relocate Blk. # 633 & # 634	V-16 6/36	12-5-39		D.L.A.
2	Relocate Blk. # 633 & # 634	V-16 6/36	12-5-39		D.L.A.
3	Relocate Blk. # 633 & # 634	V-16 6/36	12-5-39		D.L.A.
4	Relocate Blk. # 633 & # 634	V-16 6/36	12-5-39		D.L.A.
5	Relocate Blk. # 633 & # 634	V-16 6/36	12-5-39		D.L.A.
6	Relocate Blk. # 633 & # 634	V-16 6/36	12-5-39		D.L.A.
7	Relocate Blk. # 633 & # 634	V-16 6/36	12-5-39		D.L.A.
8	Relocate Blk. # 633 & # 634	V-16 6/36	12-5-39		D.L.A.
9	Relocate Blk. # 633 & # 634	V-16 6/36	12-5-39		D.L.A.
10	Relocate Blk. # 633 & # 634	V-16 6/36	12-5-39		D.L.A.
11	Relocate Blk. # 633 & # 634	V-16 6/36	12-5-39		D.L.A.
12	Relocate Blk. # 633 & # 634	V-16 6/36	12-5-39		D.L.A.
13	Relocate Blk. # 633 & # 634	V-16 6/36	12-5-39		D.L.A.
14	Relocate Blk. # 633 & # 634	V-16 6/36	12-5-39		D.L.A.
15	Relocate Blk. # 633 & # 634	V-16 6/36	12-5-39		D.L.A.
16	Relocate Blk. # 633 & # 634	V-16 6/36	12-5-39		D.L.A.
17	Relocate Blk. # 633 & # 634	V-16 6/36	12-5-39		D.L.A.
18	Relocate Blk. # 633 & # 634	V-16 6/36	12-5-39		D.L.A.
19	Relocate Blk. # 633 & # 634	V-16 6/36	12-5-39		D.L.A.
20	Relocate Blk. # 633 & # 634	V-16 6/36	12-5-39		D.L.A.
21	Relocate Blk. # 633 & # 634	V-16 6/36	12-5-39		D.L.A.
22	Relocate Blk. # 633 & # 634	V-16 6/36	12-5-39		D.L.A.
23	Relocate Blk. # 633 & # 634	V-16 6/36	12-5-39		D.L.A.
24	Relocate Blk. # 633 & # 634	V-16 6/36	12-5-39		D.L.A.
25	Relocate Blk. # 633 & # 634	V-16 6/36	12-5-39		D.L.A.
26	Relocate Blk. # 633 & # 634	V-16 6/36	12-5-39		D.L.A.
27	Relocate Blk. # 633 & # 634	V-16 6/36	12-5-39		D.L.A.
28	Relocate Blk. # 633 & # 634	V-16 6/36	12-5-39		D.L.A.
29	Relocate Blk. # 633 & # 634	V-16 6/36	12-5-39		D.L.A.
30	Relocate Blk. # 633 & # 634	V-16 6/36	12-5-39		D.L.A.
31	Relocate Blk. # 633 & # 634	V-16 6/36	12-5-39		D.L.A.
32	Relocate Blk. # 633 & # 634	V-16 6/36	12-5-39		D.L.A.
33	Relocate Blk. # 633 & # 634	V-16 6/36	12-5-39		D.L.A.
34	Relocate Blk. # 633 & # 634	V-16 6/36	12-5-39		D.L.A.

RIGHT OF WAY AND TRACK MAP  
 THE HOCKING VALLEY RY. CO.  
 HOCKING DIVISION  
 STATION 2658+00 TO STATION 2710+50  
 SCALE: 1" = 100' NOVEMBER 24, 1917  
 OFFICE OF VALUATION ENGINEER  
 COLUMBUS, OHIO.