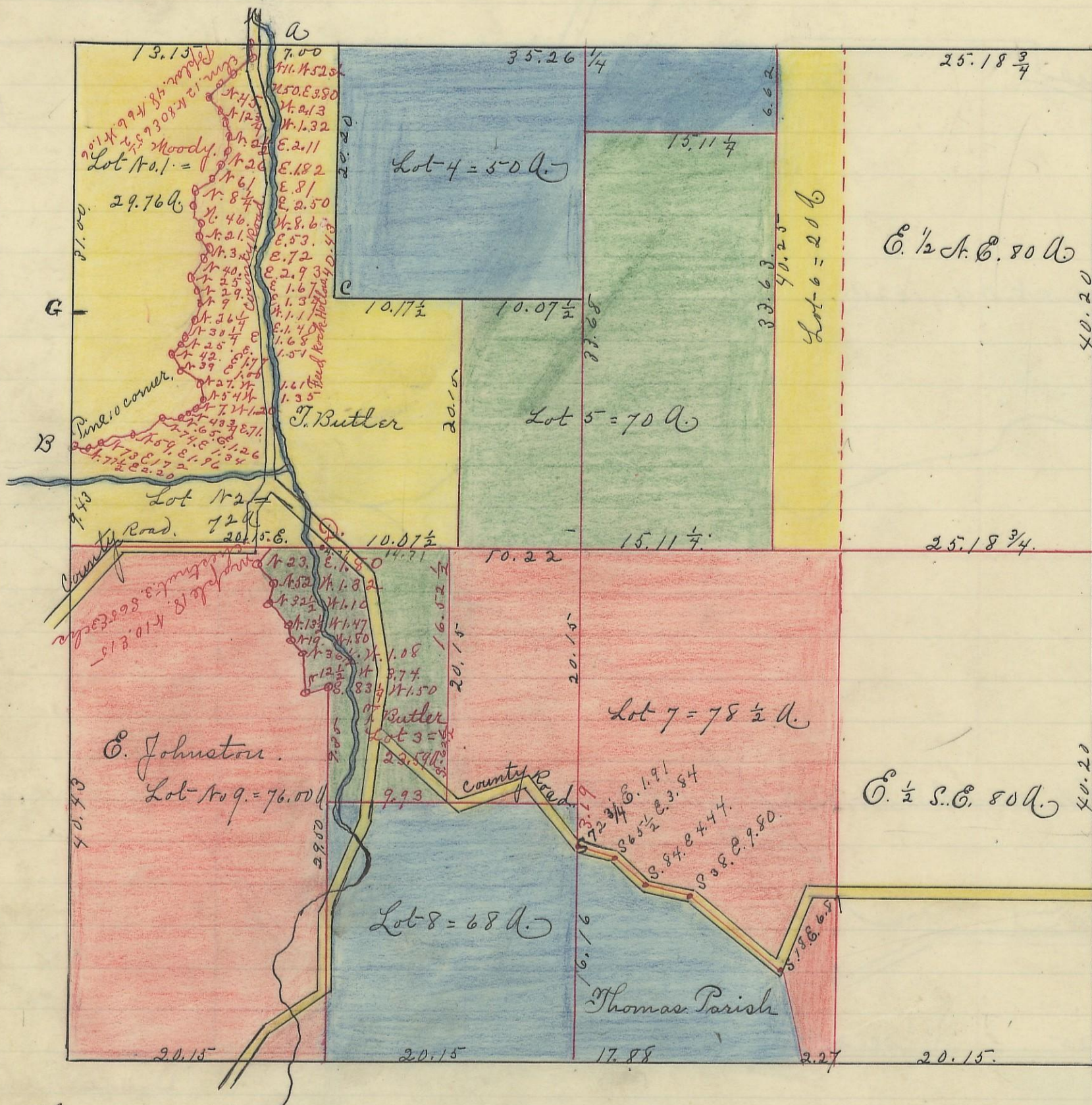


BENTON, No. ¹¹/₁₂, Range 18, Section No. 35

Variation
1° 45' N.



- A. - Elm 12 N. 80. E. 65 1/2. Poplar 48. N. 66. N. 106.
- B. - Pine 10 Corner tree
- C. - Gum 14. South 15 Sour gum 6. S. 68 N. 15 1/2.
- D. - Iron Wood 12. S. 12 1/4 E. 37. Elm 13. S. 58 N. 50.
- E. - Maple 18. N. 10 E. 15 Chestnut 3 S. 65 E. 3.
- F. - N. W. 8 N. 60 N. 10. Pine 3 East 24.
- G. - B. W. 12 N. 81 1/2 E. 16 twin. N. W. North 39.

I hereby certify the above to be a correct Plat of Fractional Lots in Section No. 35. Township No. 11. Range No. 18. Shocking County Ohio. Surveyed 1870. By Levi Davis Surveyor. S. C. W.

Res'd and Recorded Jan 3rd 1884. Jacob Weaver. Recorder.
I hereby certify the above to be a true copy. P. D. Sloan. Recorder.
The above Plat transferred from Plat Book "A" page 360. Record of fractional lots S. C. W. April 19th 1901. P. D. Sloan. Recorder.

S. C. W.