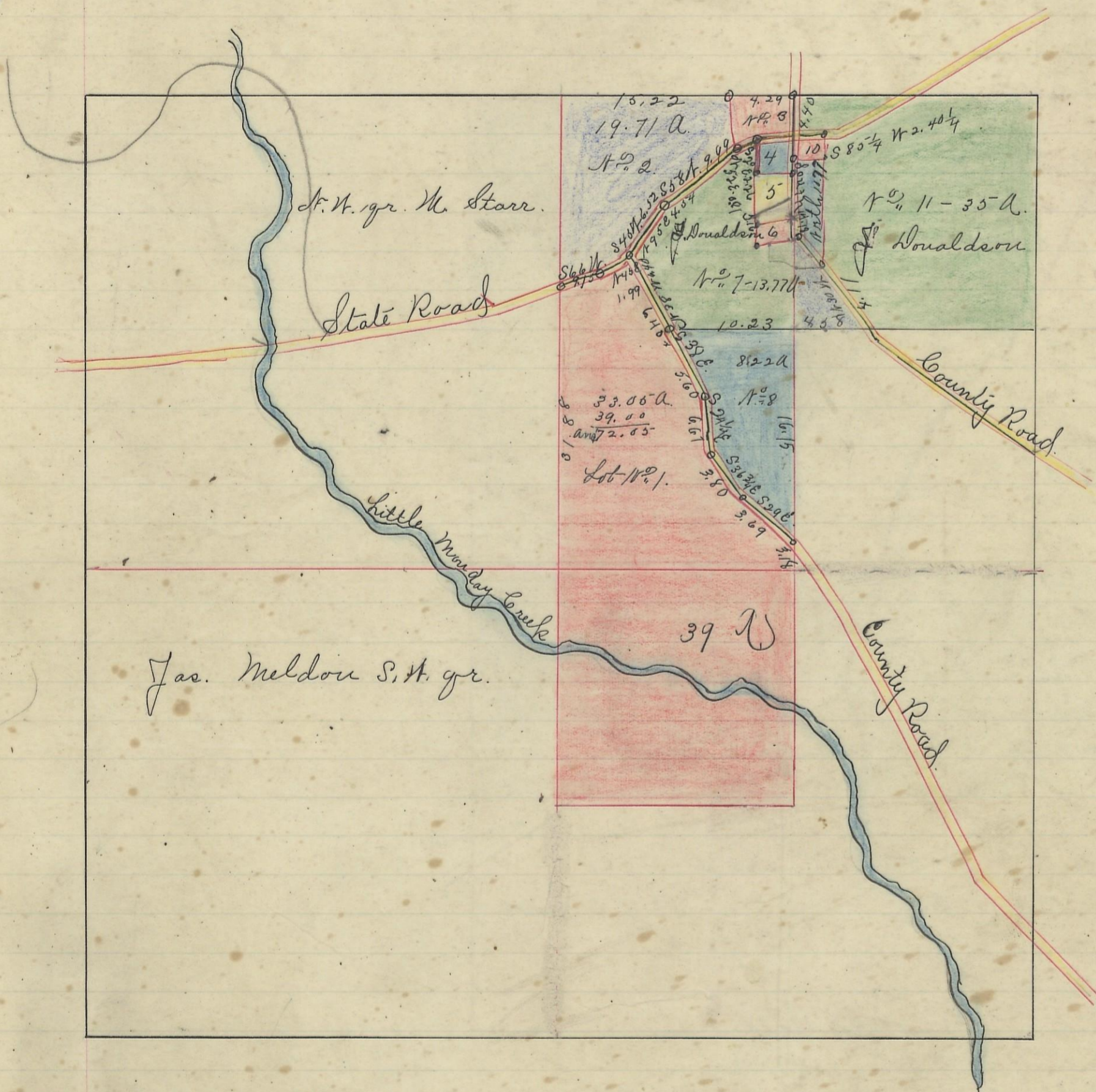


FALLS, No. 14, Range 16, Section No. 34.



Variation
1° 30' N

Scale 10 chs to an inch

An Nixon Lot No. 3 beginning at N.E. corner thence West 4.29 chs S 15° E 6.38 chs N 52° E 0.81 chs N 55° E 1.41 chs N 60 1/4° E 0.98 1/2 chs and North 4.40 chs to beginning containing 1.89. Noah Starr Lot No. 4 beginning at N.E. corner, thence S 60 1/4° N 0.98 1/2 chs S 55° N 1.41 chs. S 2° E 2.25 chs N 84 1/4° E 1.94 chs and North 3.39 to beginning, containing, 56 a. Dennis Lot No. 5 Beginning at N.E. corner, thence S 84 1/4° N 1.94 chs - South 3.62 N 71° E 2.06 1/2 chs and North 3.13 to Beginning, 65 a. Lot No. 6 Beginning at N.E. corner thence S 71° N 2.06 1/2 chs South 1.54 N 84 1/4° E 1.94, and North 2.53 chs to beginning containing 0.35 a. Thos Macklin Lot No. 10. Beginning N.W. corner thence N 60 1/4° E 0.87 chs N 67 1/2° E 1.50 chs S 14° E 1.12 chs South 1.00 chs S 85 1/4° N 2.40 1/4 chs and North 1.28 chs to beginning containing 41 a. Lot 2. H. B. Tucker. 19-71. a.

I hereby certify the above to be a correct Plat of fractional lots from No. 1. to 11 inclusive in Section No. 34. Township No. 14 Range No. 16.

Recorded July 10 1866.

Surveyed May 1866 By Levi Davis Sur. 2664.

Hiram Acker. Recorder. S. C. W.

I hereby certify the above to be a true copy. P. D. Sloan. Recorder. S. C. W.

The above Plat transferred from Plat Book "A" page 31. Record of fractional lots S. C. W. May 7 1861. P. D. Sloan