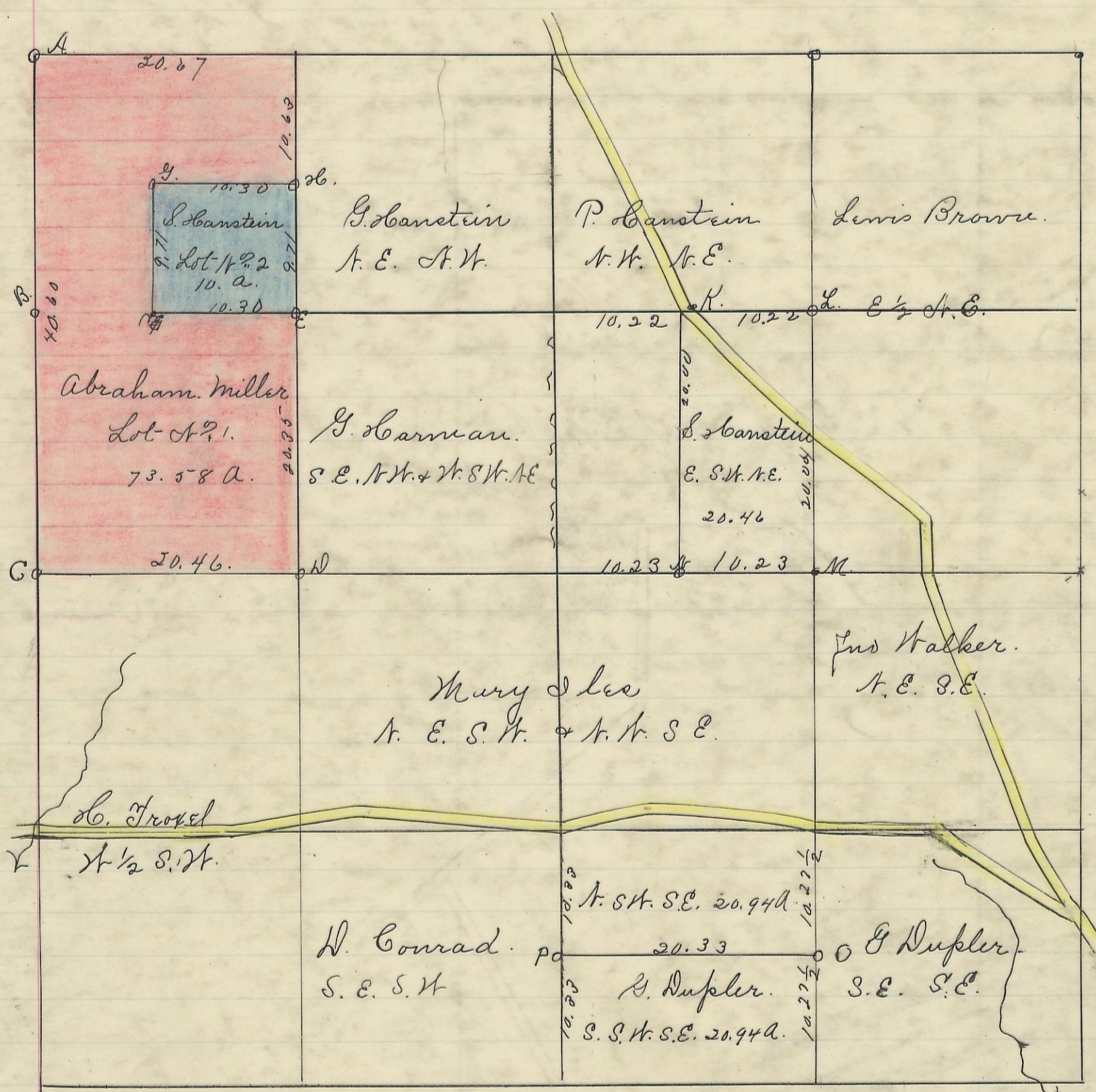


GOOD HOPE, No. 13, Range 18, Section No. 13.



Variation
1° 45' N.

- A N. 0. 22. S 46. E 37. B. 0 10. A 78. N. 22.
- B. Gum. 8 S. 18. N. 16 Poplar 16 S 37 1/2 N. 74 1/2
- C. Beech 16. S 87 1/2 E 14 1/2 To 15 N. 6. E 55
- D sugar 12. N 75 E 33. Gum 10 N 2 1/2 E 31.
- E. Beech 24. S 82 E. 42 1/2 Poplar 10 N. 33 1/2 N. 9
- F. B. 0. 14. N. 59 E. 14. N. 0. 8. S. 57 1/2 E. 9 3/4.
- G. Poplar 6 South 22 1/2 N. W. 1 S 62 N 9.
- H N. W. 13 N. 33 N. 217
- I. Sassafras 8 N. 6 E 31.
- K. Hickory 24 S. 28 N. 25 1/2
- L. Chestnut 12 S 88 E. 14 Sour Gum 3. S 11 E 4
- M. Chestnut 25. 48 E 5. P. 0. 6 N 4 N 26 1/2
- N. Chestnut 1 1/2 N 60 E 13. Birch 10 N. 65 1/2 N. 65 1/2
- O. Sugar. 20 S. 24 1/2 E. 72
- P. B. 0 14 N 12 E 31. against East side of a Beech Stump. 20.

I hereby certify the above to be a correct Plat of fractional lots in Section No. 13. Township No. 13 Range No. 18 Locking County Ohio Surveyed 1869 By Levi Davis Surveyor. O. C. W. Received and Recorded Feby 22 1884. Jacob Weaver. Recorder.

I hereby certify the above to be a true copy P. D. Sloan Recorder.

The above Plat transferred from Plat Book "A" Page 387 Record of fractional lots. O. C. W. May 8 1901 P. D. Sloan Rec.