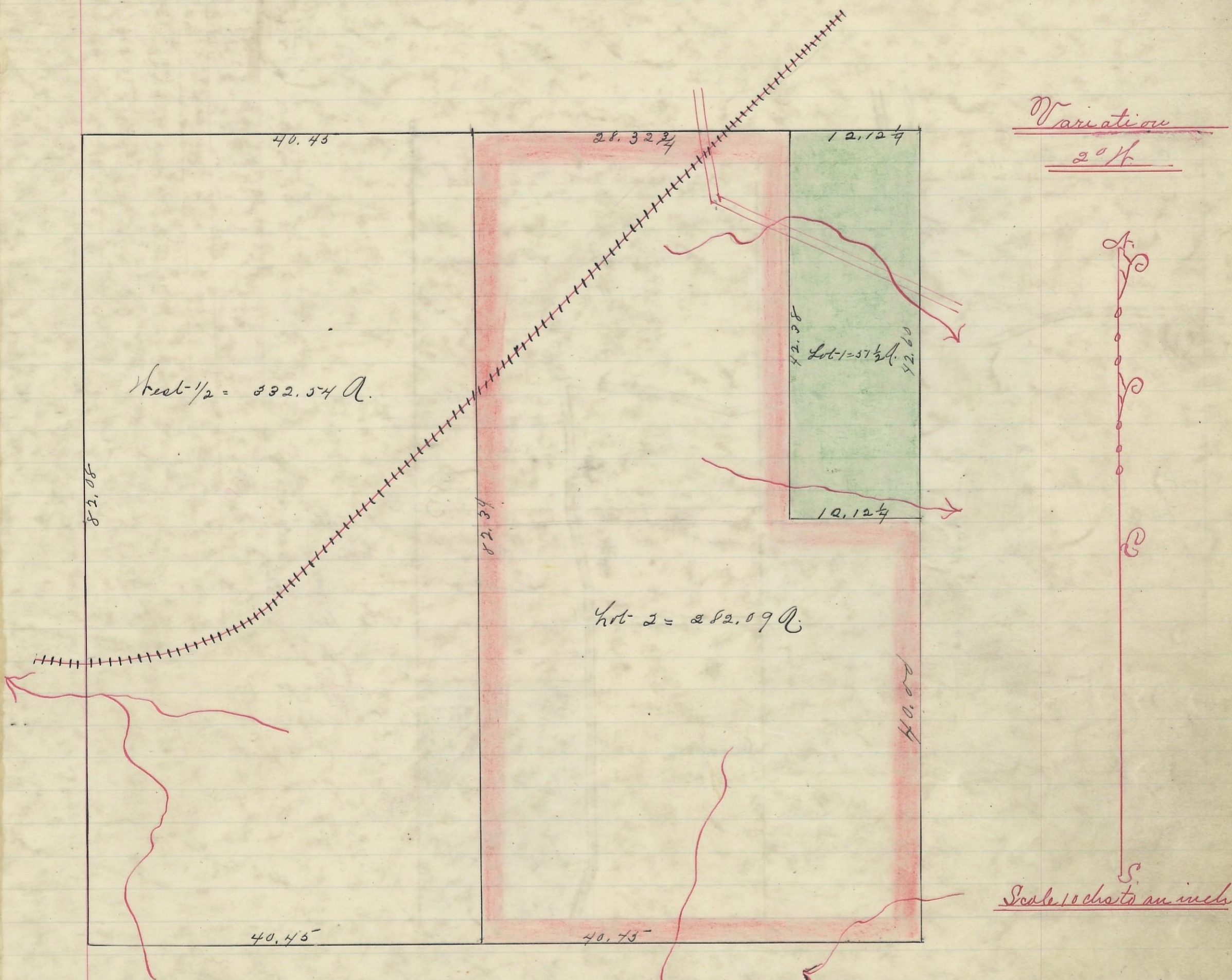


GREEN, No. 13, Range 16, Section No. 1.



Scale 10 chs to an inch

I here by certify the above to be a correct Plat of fractional Lots in Section No. 1, Township No. 13 Range No. 16. Ohio Company's Purchaseocking County Ohio Surveyed 1870

By Levi Davis Surveyor.

Recorded Nov. 20. 1883.

Jacob Weaver.

Recorder.

I hereby certify the above to be a true copy.

P. D. Sloan Recorder S. C. W.

The above Plat transferred from Plat-Book "A" page 274. Record of fractional Lots S. C. W. May. 13 1901.

P. D. Sloan

Recorder S. C. W.