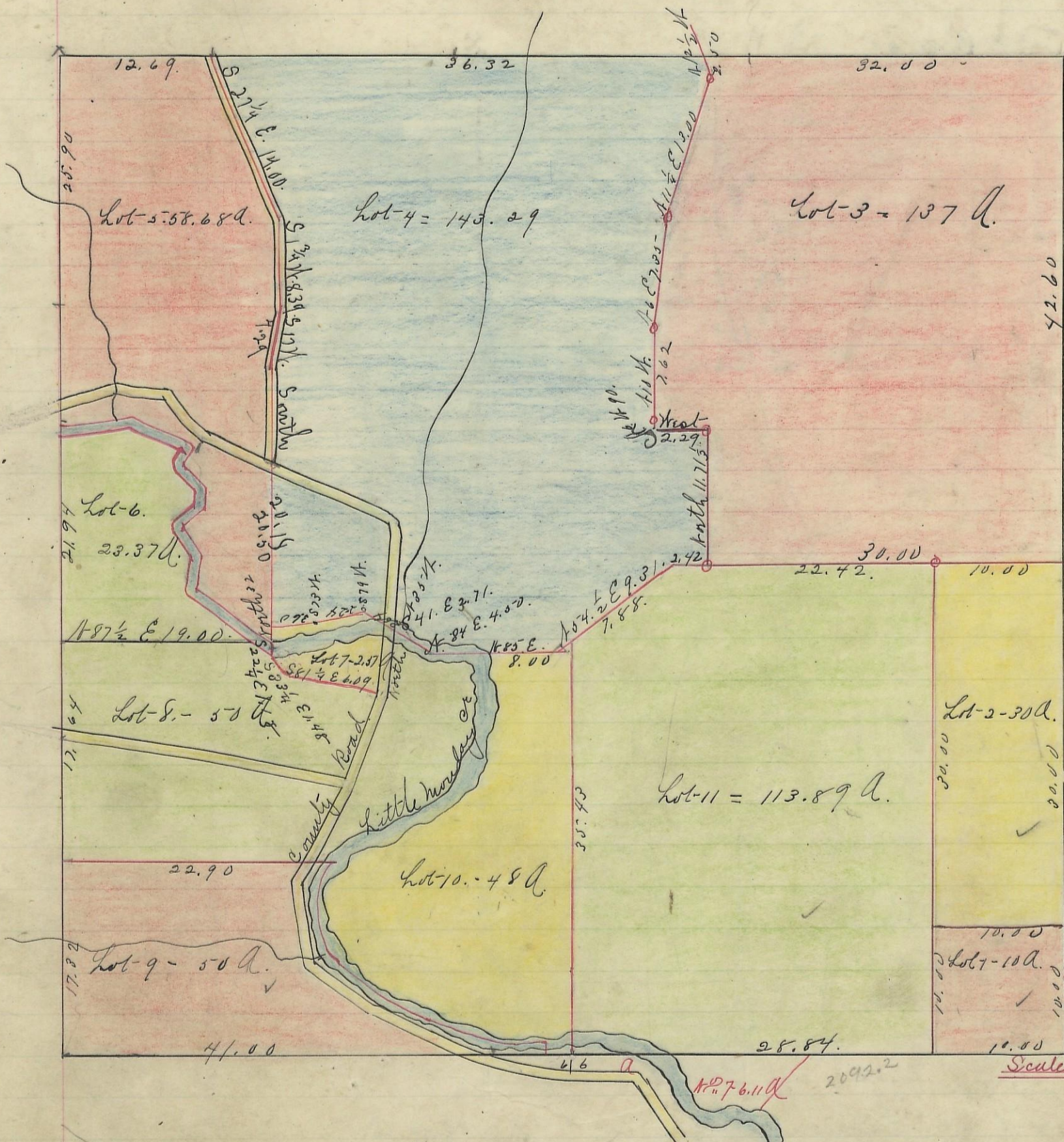


GREEN, No. 13, Range 16, Section No. 6.



Variation
2 1/4

Scale 10 chs to an inch

4259
10130
17350

I hereby certify the above to be a correct Plat of Fractional Lots in Section No. 6. Township No. 13 Range No. 16. Ohio Company's Purchase. Stocking County Ohio containing 666.74 Acres.

Surveyed 1870. By Levi Davis Sur. S. C. W.

I hereby certify the above to be a true copy.

P. D. Sloan.

Recorder.

The Above Plat transferred from Plat Book "A" page 137. Record of fractional lots S. C. W. May 15th 1901.

P. D. Sloan Recorder S. C. W.