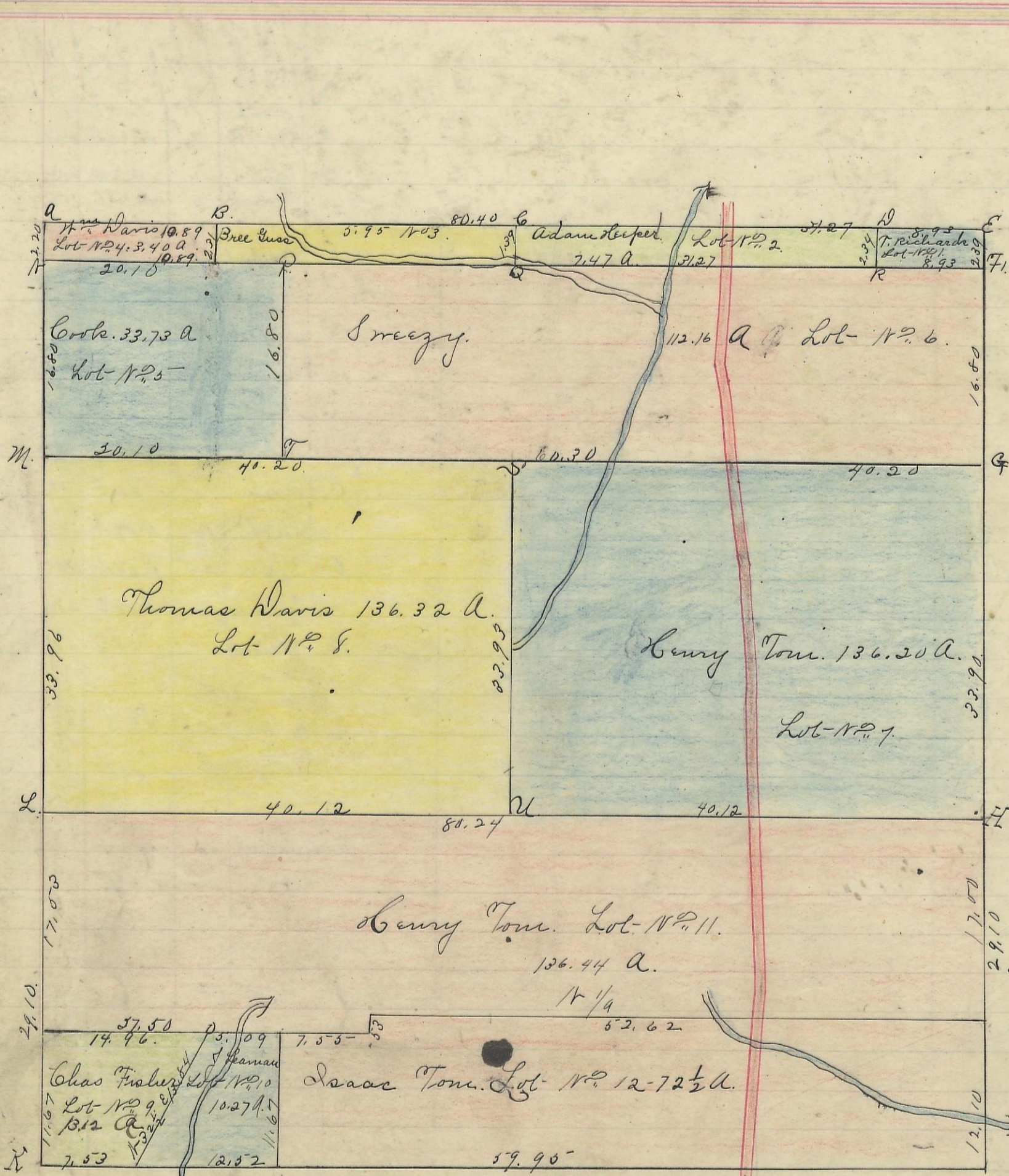


GREEN, No. 13, Range 16, Section No. 10



Corner	Bearing of Tree	Diameter	Compass	Distance	Remark
A	Poplar	18	S 18 N	32	
	H Oak	24	S 5 1/2 N	37	
B					
C	Mulberry	18	S 5 1/2 N	110	
	W oak	18	N 41 E	3	
	Do	20	S 80 N	18	
	B. Walnut	6	South	47 3/4	
	Do	6	S 84 N	37 3/4	
	Do	14	S 60 N	20 1/2	
	B. Walnut	4	N 58 1/2	15	
	H oak	30	N 64 E	68 1/2	
	W o	10	S 48 E	46 1/2	
	W oak	24	S 29 E	15	
	W o	24	S 89 N	17	
	apple tree	4	N 1/2 N	153 1/2	
	B. val.	3	N 22 E	188 1/2	
	W oak	18	S 59 N	171	
	Apple tree	2	S 29 1/2 N	21 3/4	
	W oak	14	S 9 E	54	
	B. oak	10	S 53 1/2 E	38 1/2	
	W oak	30	N 4 E	24	
	W o	30	S 28 E	31	
	H Cherry	14	N 52 1/2 N	26	
	Chusnut	6	S 84 E	188	
	B. oak	12	N 52 E	23	
	Do	10	S 5 1/2 N	21 3/4	South Bank of a Drain
	maple	10	N 7 1/2 N	61	
	W o	12	South	6 1/2	
	Do	4	N 41 1/2 E	33 3/4	
	Hickory	8	N 74 1/2 E	33 3/4	

I hereby certify the foregoing to be a correct Plat of Fractional Lots in Section No. 10, Township No. 13, Range No. 16, Ohio Companies Purchase,ocking County Ohio containing Acres. Surveyed 1868 by Levi Davis Sur. S. C. O. Recorded July 29 1869. by J. E. Smart Recorder S. C. O. Variation 1 45 1/2 N.

I hereby certify the above to be a true copy. P. D. Sloan Recorder, S. C. O. This above Plat transferred from Plat-Book "A" page 120 & 121. Record of fractional lots S. C. O. May 16 1901. P. D. Sloan Recorder, S. C. O.