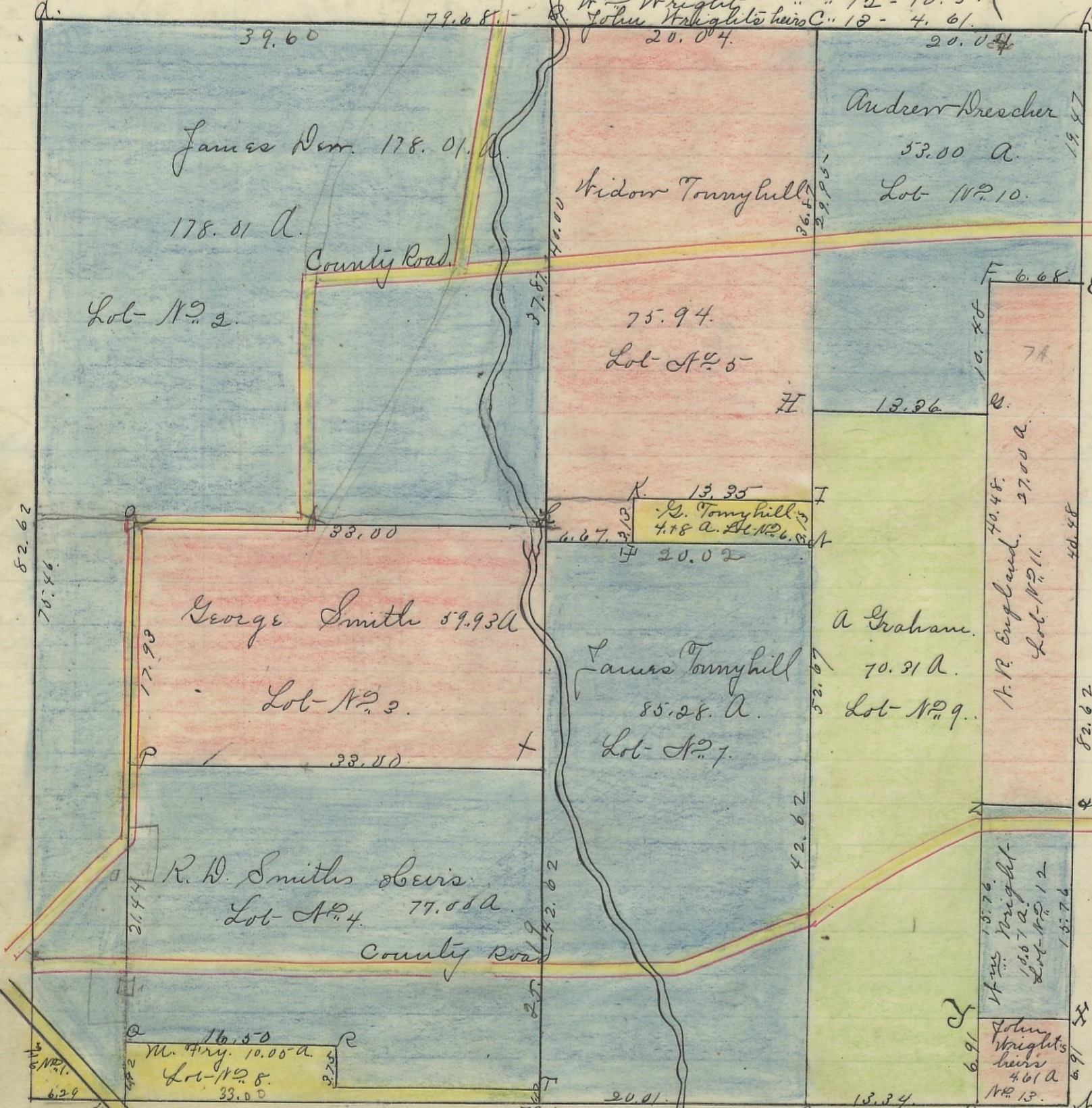


GREEN, No. 13, Range 16, Section No. 28.

George Smith Lot No. 1 & 3 62.18
 James Dorr " " 2 178.01
 R.D. Smith's heirs " " 4 77.00
 Widow Tomnyhill " " 5 75.94

Y. Tomnyhill Lot No. 6 = 4.18
 James Tomnyhill " " 7 = 86.28
 M. Fry " " 8 = 10.00
 A. Graham " " 9 = 70.31
 A. Drescher " " 10 = 53.00
 A.R. England " " 11 = 27.00
 Mrs Wright " " 12 = 10.51
 John Wright's heirs C. " 13 = 4.61

Am't 658.07.



Point	Bearing	Distance in Feet	Course of Trees	Width in Feet	Remarks
A	Bearly	13	S 7 1/2 N.	38	N.W. corner of section
B	N. Oak	24	N 21 N.	18	on sec line
C	Poplar	24	S 61 1/2 E	16 1/2	Do
D	Collonwood	24	N 34 N.	16 1/2	Do
E	N. cherry	12	N 83 N.	23	original
F	N. oak	24	S 57 E	13	on sec line
G	N. oak	30	S 61 N.	62	Do
H	Sum	8	South	41 1/2	
I	N. oak	6	S 33 1/2 E	31	
J	N. oak	3	S 83 3/4 E	8	
K	N. oak	8	S 21 1/2 N.	8 1/2	
L	N. oak	30	N. E.	10 1/2	
M	Do	30	S 43 1/2 E	30	
N	N. Oak	24	S 55 E	13	
O	Sum	6	N 24 1/2 N.	24	
P	N. oak	24	N 28 E	5 1/2	
Q	N. oak	7	S 52 1/2 E	26	
R	Elm	12	N 16 1/2 N.	60	East of run
S	Do	14	S 5 N.	61 1/2	
T	Birch	10	N 52 E	12	Do
U	Sycamore	11	S 35 E	30	
V	N. oak	20	S 85 1/4 E	20	
W	Do	28	S 36 1/2 N.	44	
X	Bearly	12	N 63 1/2 E	88	
Y	N. oak	16	S 48 1/4 E	58 1/2	
Z	N. oak	11	S 82 1/2 E	46	
aa	maple	12	N 26 1/2 E	69 1/2	
ab	N. oak	24	N 32 E	218	
ac	N. oak	24	S 4 E	20	
ad	Bearly	15	S 70 1/2 N.	42	
ae	Hickory	12	N 63 1/2 E	18 1/2	
af	N. oak	16	N 48 N.	108	
ag	Dogwood	5	N 72 1/4 N.	68	on sec line
ah	Bearly	20	N 15 E	44 1/2	Do
ai	Elm	12	S 37 E	25	
aj	Hickory	10	S 8 1/4 E	9 1/2	S.E. cor of sec
ak	N. oak	6	N 23 E	16	
al	N. oak	18	S 81 1/2 E	43	on sec line
am	Do	24	N 46 E	56	
an	Bearly	22	N 79 1/2 E	13 1/2	
ao	Do	14	S 26 E	46	
ap	Hickory	14	S 23 E	38	
aq	N. oak	22	N 42 1/2 E	45	
ar	N. oak	3	S 22 1/2 N.	65 1/2	
as	Do	4	S 2 E	62	
at	Hickory	16	S 79 N.	35	on sec line
au	N. oak	12	N 62 1/2 E	26	
av	Buckeye	5	N 60 N.	12	on west bank of run
aw	Elm	18	S 24 N.	42	

I here by certify the above to be a correct Plat of Section No. 28 Township No. 13, Range No. 16, Ohio Company's purchase,ocking County Ohio, containing 658.07 Acres. Surveyed 1868. By Levi Davis Sur. G. C. C.

Received and Recorded Jan 1st 1868. Siram ackers. Rec^d G. C. C.

I here by certify the above to be a true copy
 P. H. Sloan

Recorder.

The above Plat transferred from Plat Book "A" page 102. Record of fractional lots. G. C. C. May 21st 1901.

P. H. Sloan Recorder

G. C. C.

Scale is chs to sec rods

Variation
 1745 1/4 N.