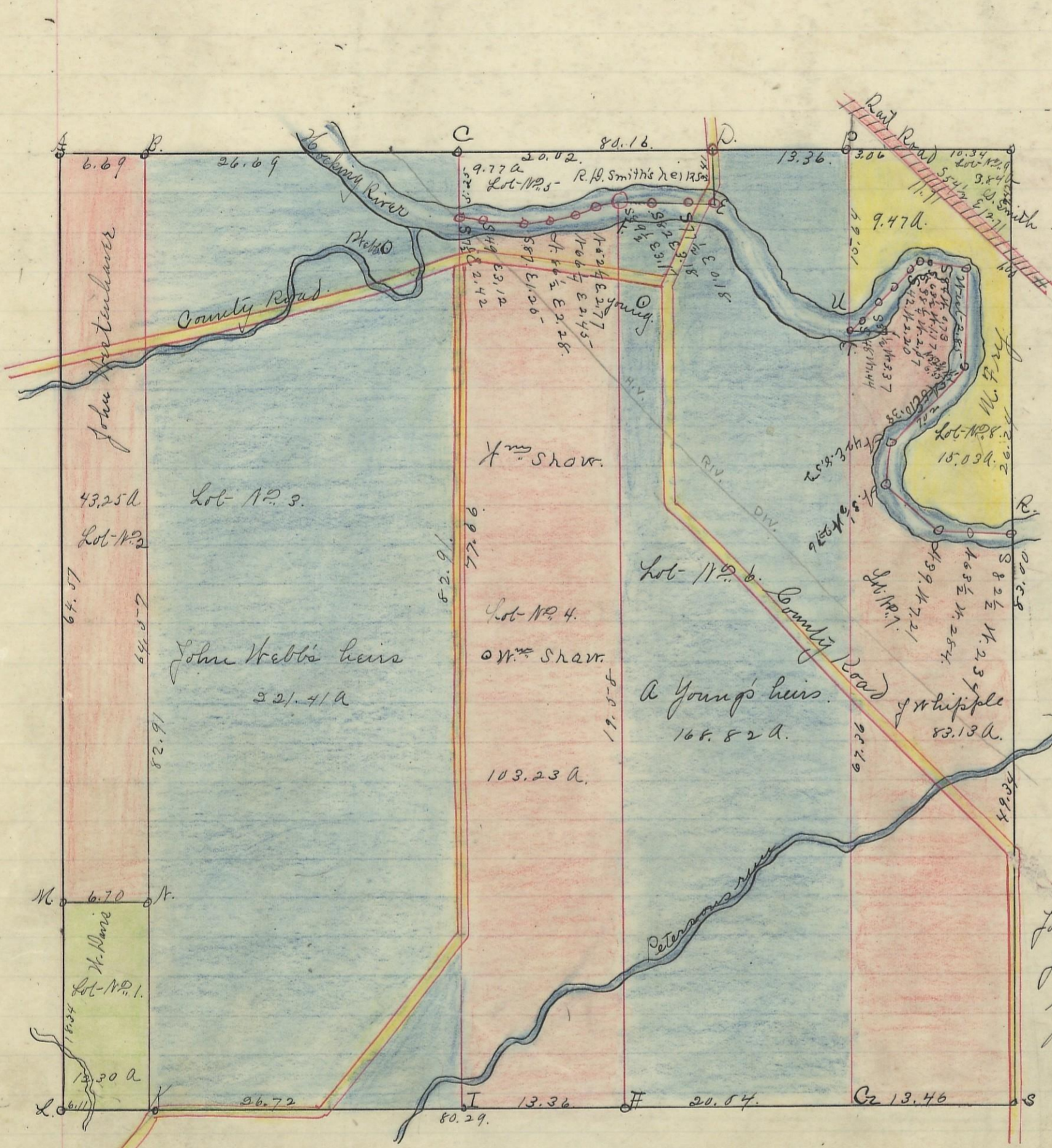


GREEN, No. 13, Range 16, Section No. 33



Pat	Bearing	Acres	Remarks
A	B. oak.	12	34 2 E. 33
B	N. oak.	8	8 57 N. 61
C	Plum.	8	17 52 E. 2 1/2
D	Box Elder.	12	5 69 E. 02
E	Elm.	22	17 52 E. 2 1/2
F	W. oak.	10	17 52 E. 2 1/2
G	W. cherry.	11	17 52 E. 2 1/2
H	W. oak.	10	17 52 E. 2 1/2
I	W. oak.	15	17 52 E. 2 1/2
J	Elm.	20	17 52 E. 2 1/2
K	Do.	24	17 52 E. 2 1/2
L	Elm.	4	East. 5
M	Apple tree.	12	17 52 E. 488
N	Sycamore.	12	17 52 E. 19
O	W. oak.	16	17 52 E. 12
P	Do.	18	17 52 E. 7
Q	W. oak.	12	3 33 1/2 N. 7
R	Sycamore	16	North 242
S	Do.	16	North 242

Lot	Owner	Acres
1	M. Davis	12.30
2	John Webster's heirs	43.20
3	John Webster's heirs	221.41
4	J. Whipple	103.23
5	R.D. Smith's heirs	9.77
6	A Young's heirs	163.82
7	J. Whipple	83.13
8	M. Fry	24.50
9	R.D. Smith	3.84
		<u>665.25</u>

I hereby Certify the foregoing to be a correct Plat of a survey of Section No. 33 Township No. 13, Range No. 16, Ohio Company's purchase, Hocking County Ohio containing 665. 1/4 acres.

Received and Recorded  
October 9<sup>th</sup> 1868.

By Levi Davis, Sur. of C. O.  
Spiran Ackers, Recorder. of C. O.

I hereby certify the above to be a true copy.  
P.D. Sloan  
Recorder.

The above Plat transferred from Plat Book "A" page 98. Record of fractional Lots. of C. O. May 22<sup>nd</sup> 1901.

P.D. Sloan Recorder.  
of C. O.