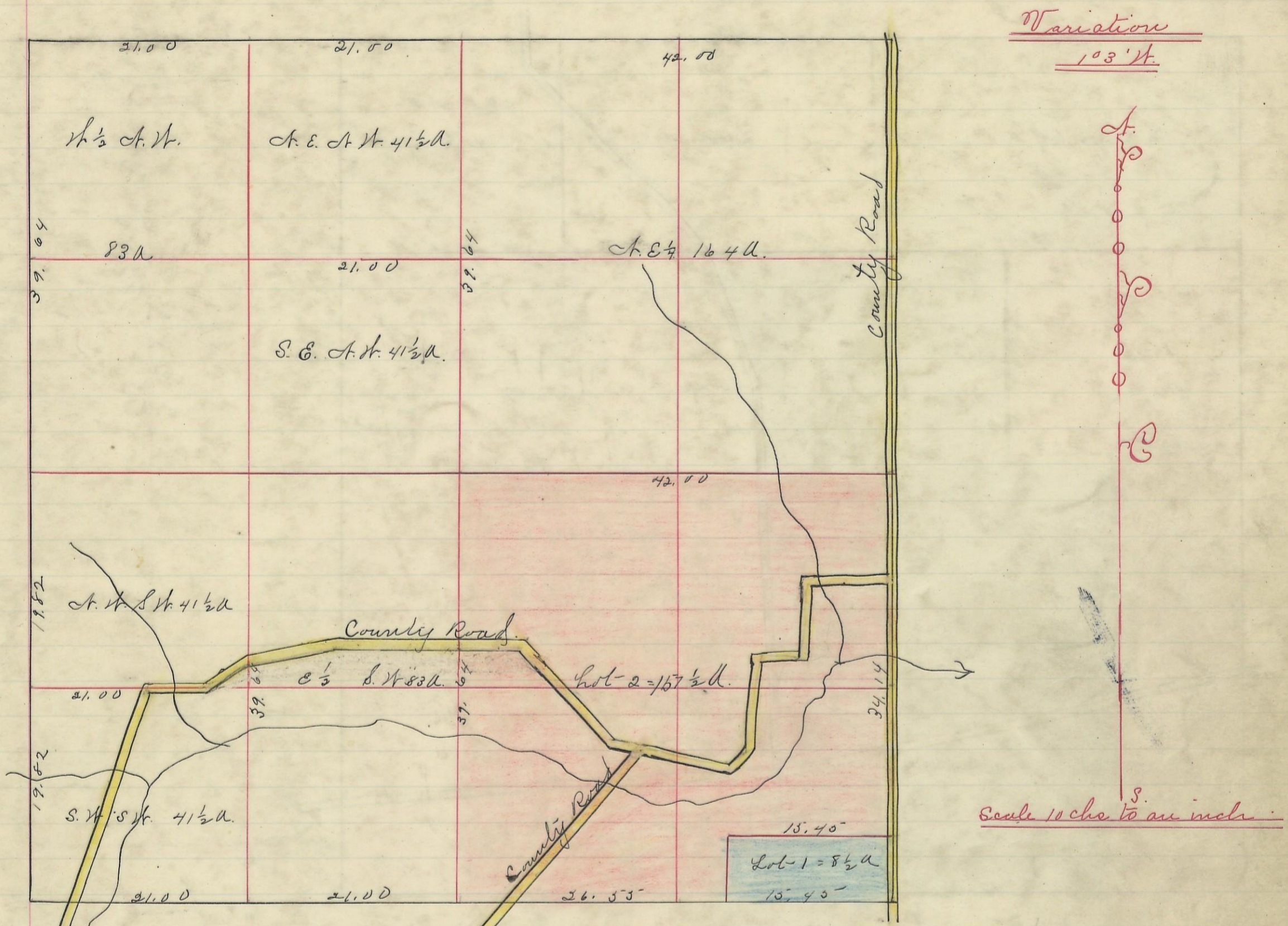


LAUREL, No. 12, Range 18, Section No. 1



I hereby Certify the Above to be a Correct Plat of Fractional Lots in Section No. 1. Township No. 12. Range 18.ocking County Ohio Surveyed 1869
 By Levi Davis Surveyor S.C.W.

Rec'd and Recorded. January 7th 1883.

Jacob Weaver. Recorder.

I hereby Certify the above to be a true copy.

P. D. Sloan Recorder.

The above Plat transferred from Plat Book "A" page 261. Record of Fractional Lots. S.C.W. May. 23rd. 1900

P. D. Sloan
 Recorder S.C.W.