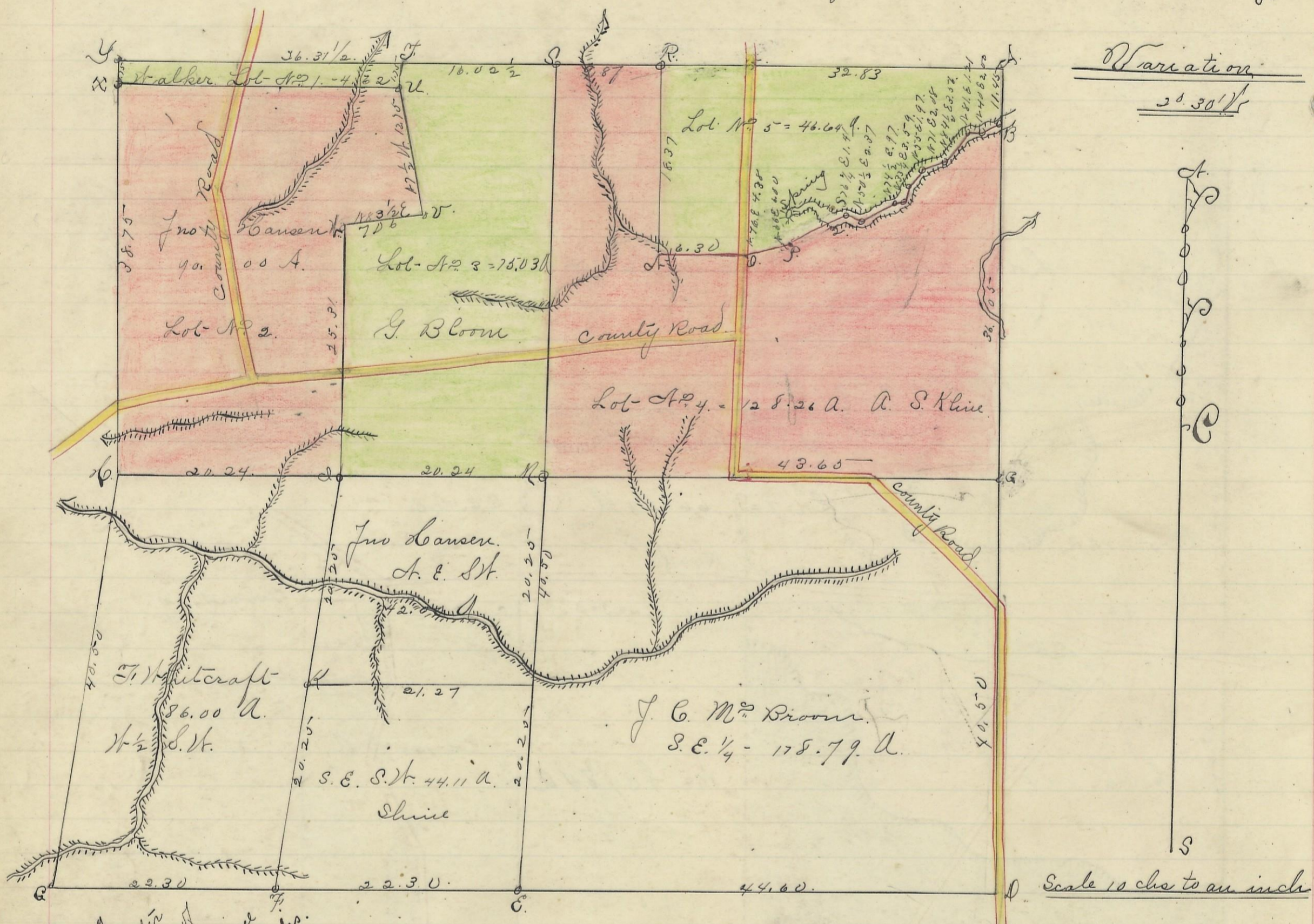


LAUREL, No. 12, Range 18, Section No. 10

#13815 10/6/72 see affidavit correcting south line of Fractional Lot No. 5, Deed Record Vol. 140 Pg. 363



Corner	Bearing of Tree	Diameter of Tree	Course of Tree	Distance	Remarks
A	N. oak	15	S 62 1/2 E	58	original
B	oak	7	S 23 E	28	
B	oak	7	S 41 W	12	
C	chestnut	4	N 42 W	40	
C	oak	10	S 71 E	29 1/2	
D	oak	7	S 57 W	8 1/2	southeast
D	chestnut	10	S 27 1/2 E	6 1/2	cor. of sec.
E	oak	4	S 70 E	9 1/2	
E	oak	3	N 22 E	29	
F	stone chestnut	36	N 8 W	4	original
H	chestnut	30	N 75 E	24	
I	N. oak	20	N 19 W	11 1/2	
I	N. o.	20	S 75 W	38	
K	N. oak	24	N 15 W	137 1/2	
L	oak	24	S 22 E	80	
M	Beech	14	N 32 E	82 1/2	
M	oak	14	S 72 E	29 1/2	
N	elm	12	N 6 W	4 1/2	
O	Locust	14	S 19 1/2 E	108 1/2	
O	Cherry	6	N 72 1/2 W	36	
P	Sassafras	10	Corner Tree		
Q	Poplar	12	S 33 1/2 E	14 1/2	

R	Hickory	24	S 70 W	18 1/2
R	Hogwood	5	N 70 W	17 1/2
S	Beech	10	S 70 E	24
S	oak	12	S 30 W	28 1/2
T	oak	10	S 15 W	31
T	o.	6	East	8
U	Poplar	10	N 24 W	14
U	Beech	4	S 87 E	6
V	Locust	10	N 86 W	29
V	Locust	12	N 50 E	33
X	oak	12	N 22 1/2 W	17
Y	Hickory	7	S 7 E	11
Z	Hickory	12	North	10
Z	oak	8	S 26 1/2 W	30

I hereby certify the above to be a correct Plat of Fractional Lots in Section No. 10 Township No. 12 Range No. 18ocking County Ohio. Surveyed 1872.
By Levi Davis Surveyor. d. c. b.
Received and Recorded Jan 12th 1884.
Jacob Heaver. Recorder.

I hereby Certify the above to be a true copy. P. D. Sloan Recorder
d. c. b.

The Above Plat transferred from Plat-Book "A" Page 367. Record of fractional Lots. d. c. b. May 24th 1901.
P. D. Sloan Rec.