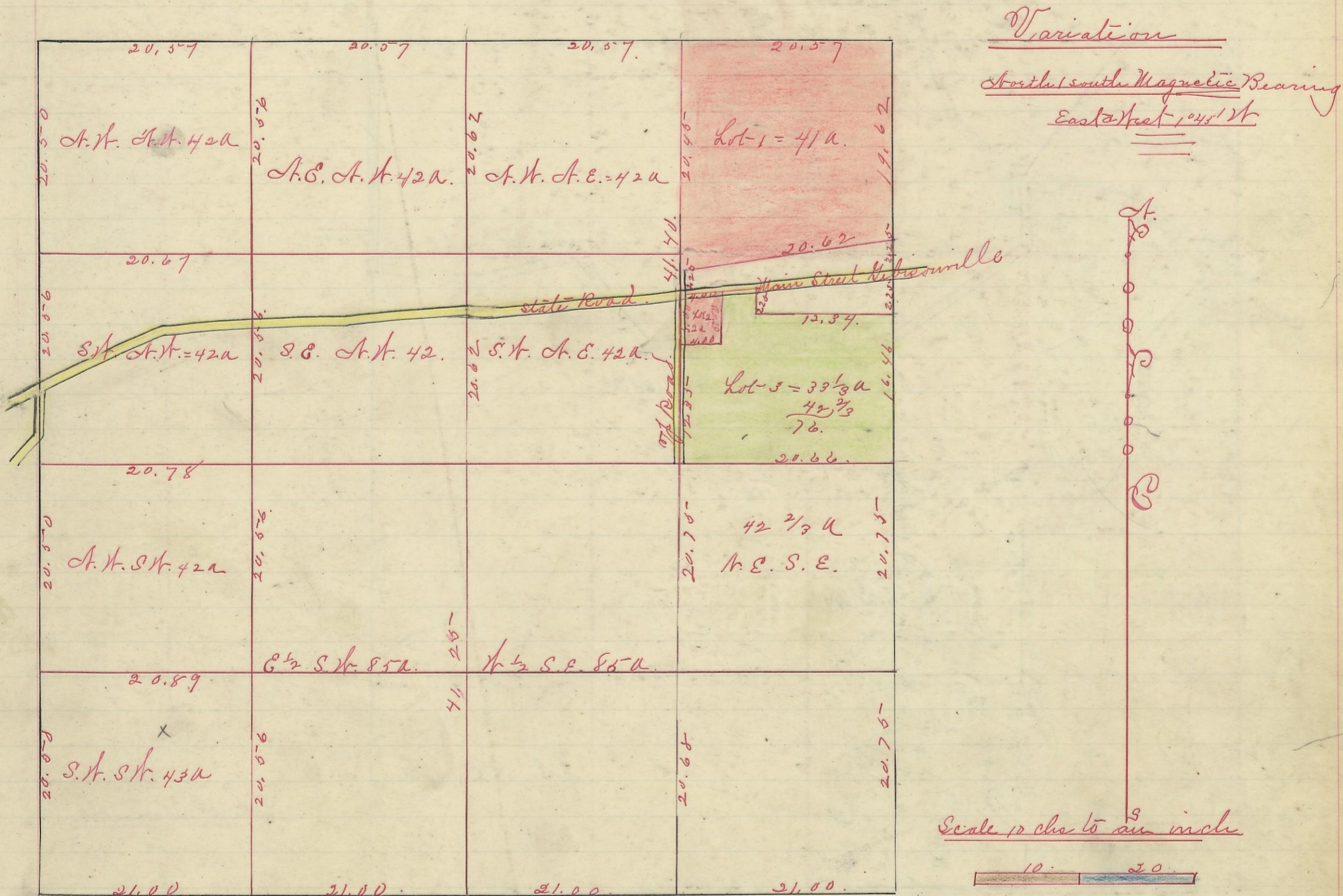


LAUREL, No. 12, Range 18, Section No. 21



I hereby certify the above to be a Correct Plat of Fractional lots in Section No. 21 Township No. 12 Range No. 18.ocking County Ohio Surveyed 1870.

By Levi Davis Surveyor S. C. O.

Rec'd and Recorded January 2^d 1884.

Jacob Weaver

Recorder

I hereby Certify the above to be a true copy.

P. D. Sloan

Recorder

The above Plat transferred from Plat-Book "A" page 273. Record of fractional Lots. S. C. O. May 27th 1901.

P. D. Sloan

Recorder S. C. O.