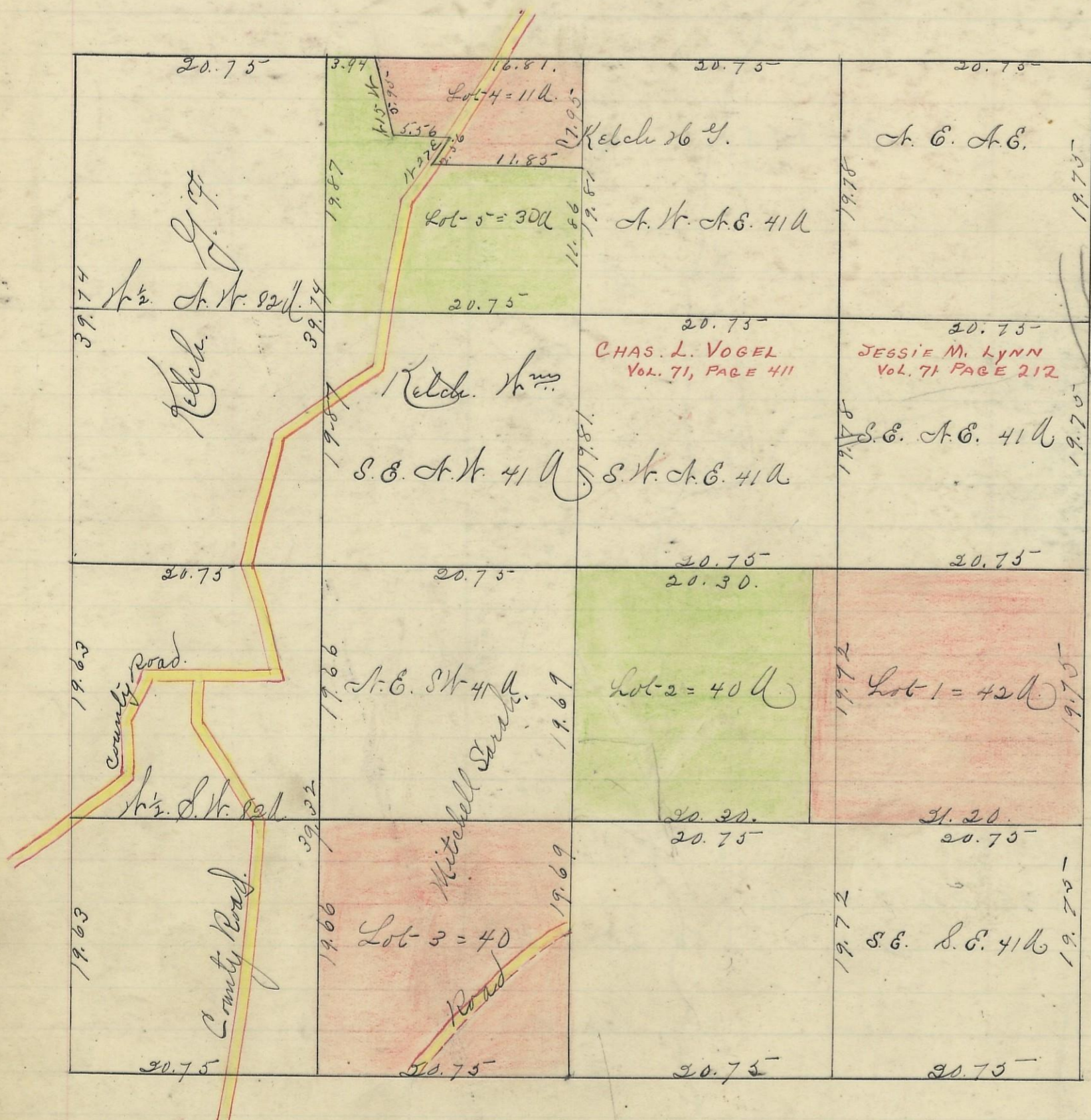


1681
864
919
65
59



Variation
1° 30' N.



Scale 10 chs to an inch

I hereby certify the above to be a correct Plat of Fractional Lots in Section No. 29. Township No. 12. Range No. 18.ocking County Ohio Surveyed. 1869. By Levi Davis.

Surveyor. L. C. W.

Received and Recorded Feb. 2nd 1884.

Jacob Weaver. Recorder.

I hereby Certify the above to be a true copy.

P. D. Sloan

Recorder

The Above Plat transferred from Plat Book "A" Page 379. Record of fractional Lots. L. C. W. May 28th 1901.

P. D. Sloan

Recorder L. C. W.