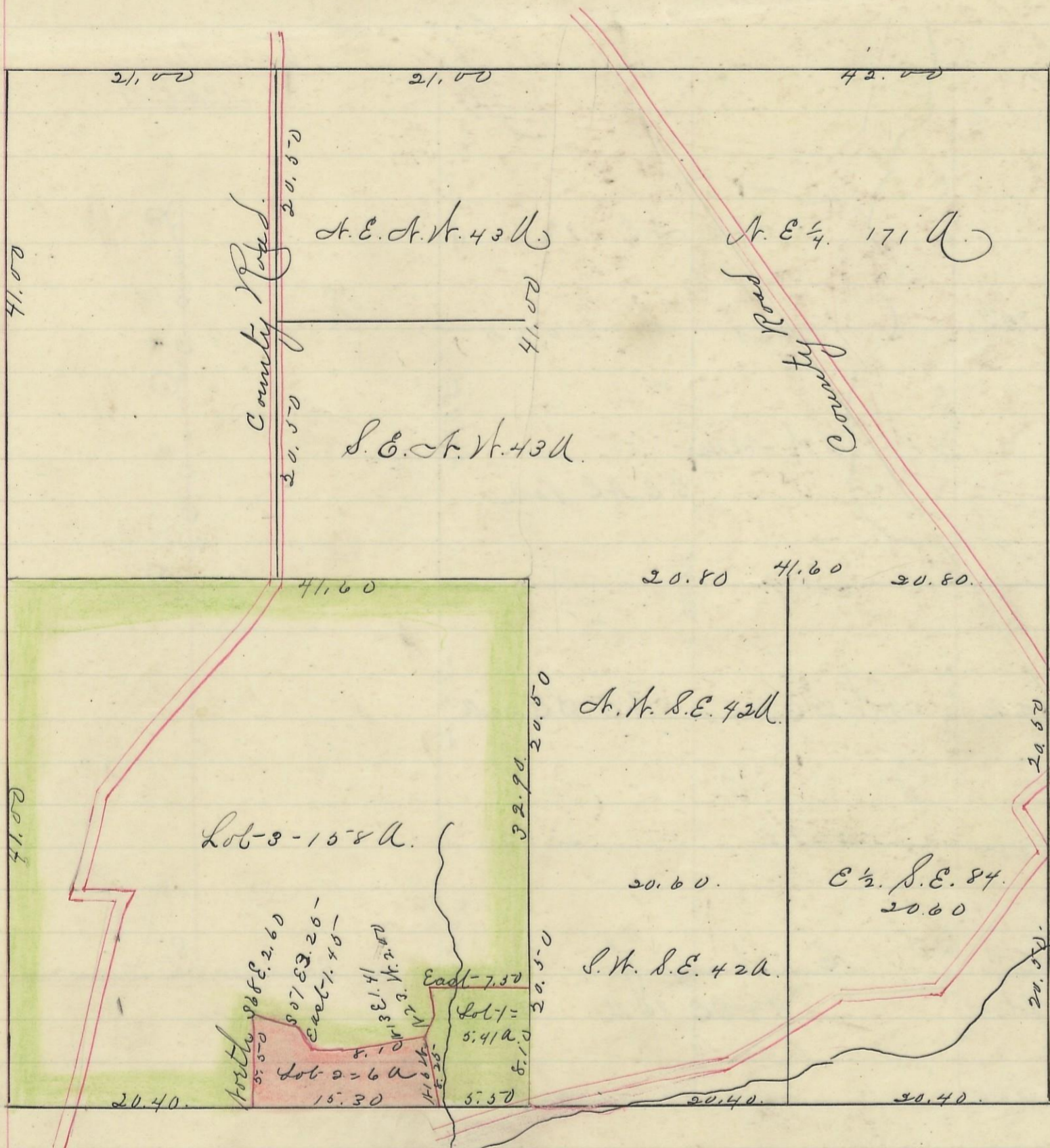


LAUREL, No. 12, Range 18, Section No. 34



Variations
1° 45' 1/2"

Scale 10 chs to an inch

I hereby Certify the above to be a correct Plat of Fractional Lots in Section No. 34. Township No. 12. Range No. 18. Hocking County Ohio Surveyed 1870.

By Levi Davis Surveyor. S. C. W.
Recd and Recorded Feb. 9th 1884.
Jacob Weaver. Recorder. S. C. W.

I hereby Certify the above to be a true copy. P. W. Sloan Recorder. S. C. W.

The Above Plat transferred from Plat Book "A" Page 284. Record of fractional Lots. S. C. W. May 28th 1901
P. W. Sloan
Recorder S. C. W.