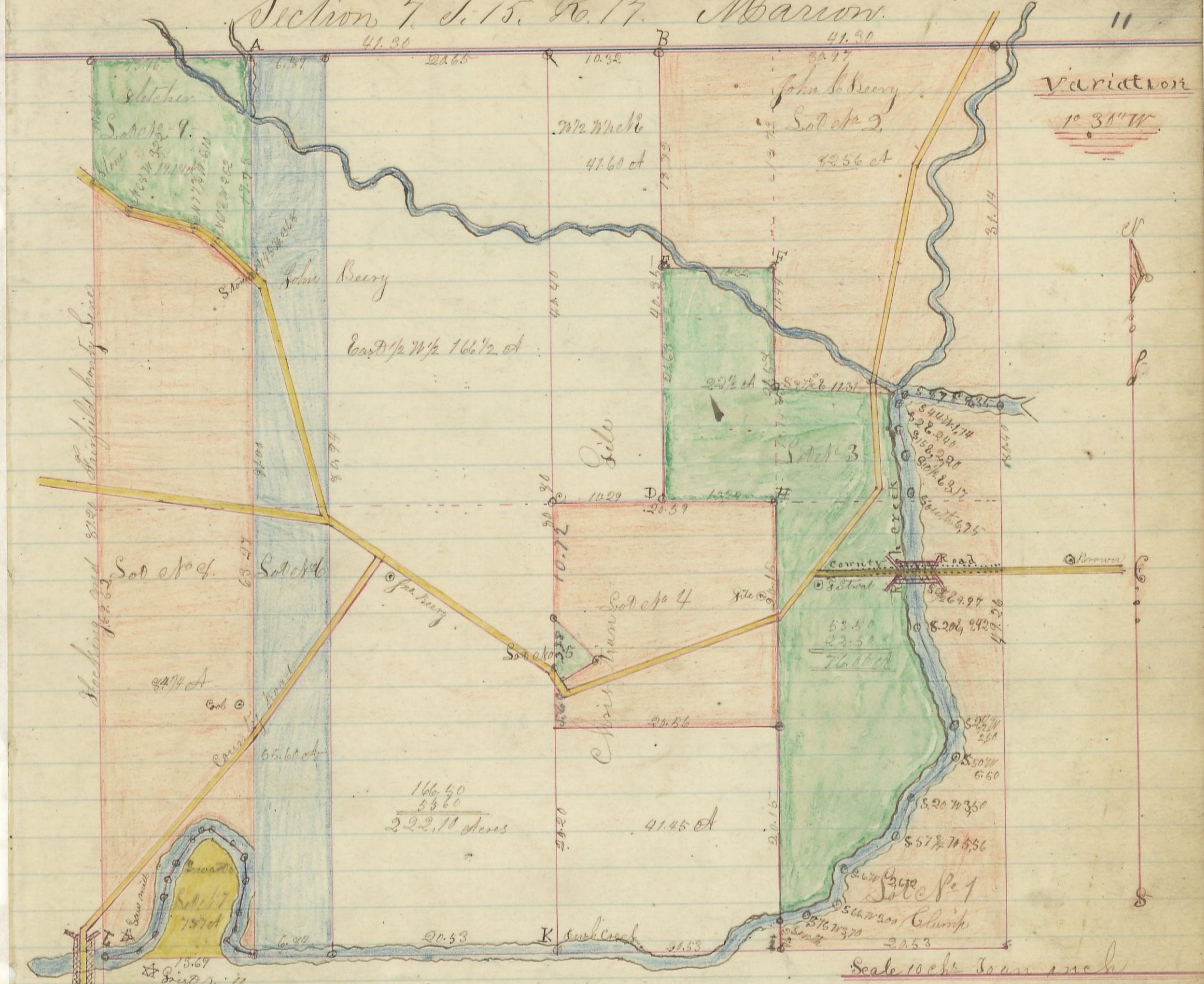


Section 7 T. 15. R. 17. Marion.



Comp Sect 10 1 - 49.00	Acres	Sect 10 1 (S) 89 1/2° E 177.40 N 59 1/2° E 220.40 N 45 1/2° W 5.25 x South 3.84 = 1.00 acres
Starch Sect 3 - 76.00	Acres	Sect 3 (W) N 44 1/2° E 277.10 N 45 1/2° E 150.40 E 337.40 E 6.00 E 223.40 E 25° E 1.36 x 21.34 E 3.24 x 149° E 1.40 x
John Berry Sect 2 - 42.56	Acres	N 42° E 177.74 S 71° E 230.48 S 40° E 140 x South 199 x S 1/4 N 29 1/4 S 12 N 2.31 x S 37 N 223 x 3 1/2 E
Gile Sect 4 - 40.51	Acres	1.19 x S 72 1/2 E 2.06 x West 13-19 = 7.97 A
Gile - Sect 5 - 7.10	Acres	A Stone Sycamore 5 75 N 24 Sinks - B Stone Hickory 14 87 N 24 Sinks - C Stone Dogwood 8 - 1
John Berry Sect 6 - 55.50	Acres	32° E 15 1/2 Beech 6 North 43 - D Hickory 21 S 45 1/2 E 125 1/2 - E Beech 4.55 E 1 1/2 Gum 10
Quartz Sect 7 - 7.87	Acres	N 71° W 6 - F Stone Beech 4 N 78 W 9 - Beech 4 S 37 N 10 1 1/2 - G Stone Beech 1/2 North 55 1/2
Coal Sect 8 - 84.25	Acres	H Stone B Walnut 7 North 7 1/2 Chaple 9 S 10 1/2 N 76 1/2 - I Stone Beech 9 S 79° E 9 1/2 Gum 15 West 25 1/2
Wetche Sect 9 - 19.14	Acres	K Stone Cherrid 4 S 69 E 9 1/2 - L Stone North of South West corner of section 125 Sinks
41597		Beech 22 N 47 E 6 1/2 Sinks
John Berry Sect 10 - 166.50	Acres	
Wm Webb Sect 11 - 41.60	Acres	
54.86	41.45	
Total	665.52	Acres

Received and recorded June 29th 1866 H. H. H. Recorder H. C. C.