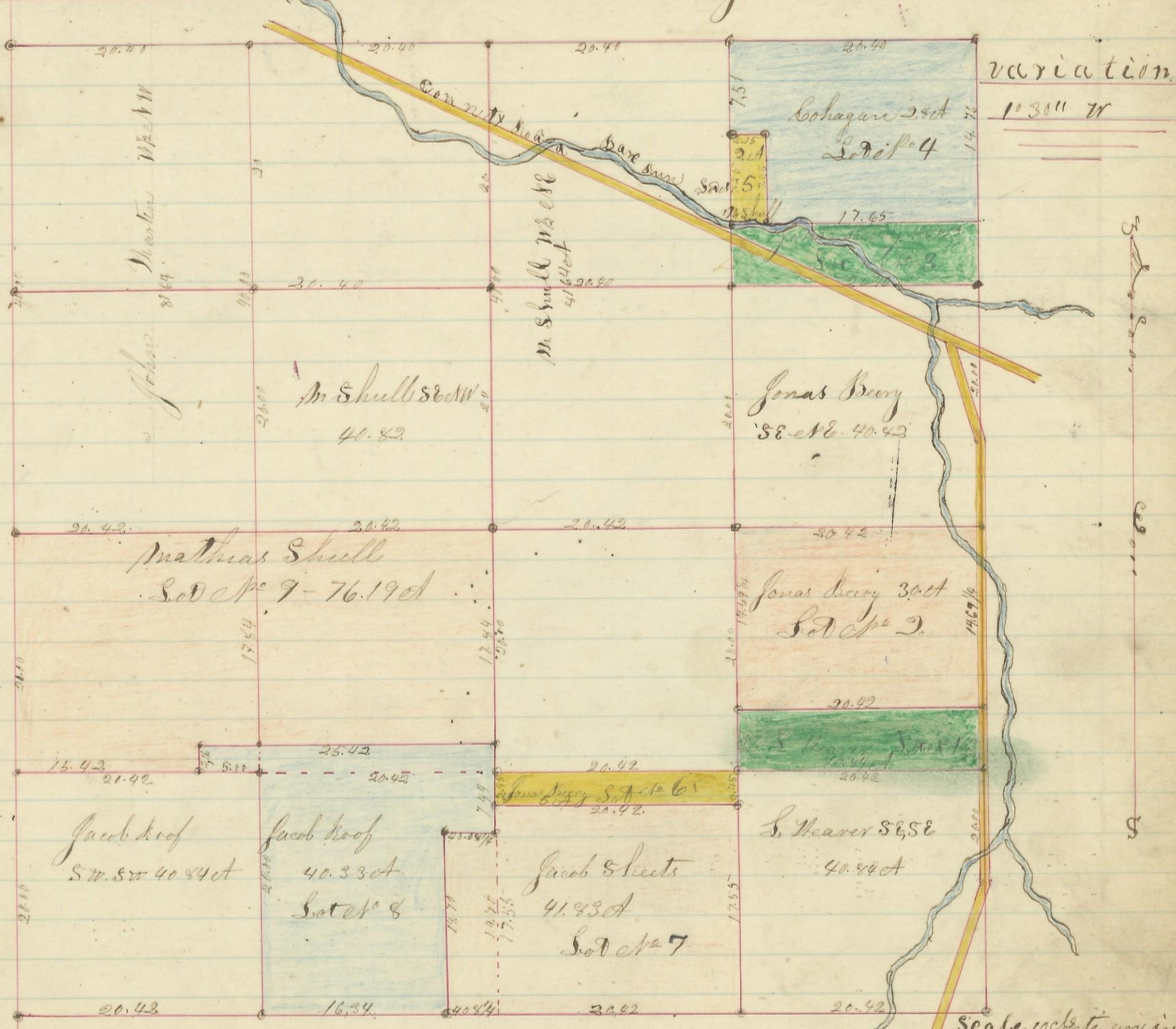


Section 14, 15 Range 17 Marion



S. Ketchy Certify, the above to be a correct Plat of Section 14, 15 Range 17, Jackson County Ohio, fractional Lots, Surveyed July 3rd 1866 (Stones planted at all the corners) By Levi Davis Sur. S. C. O. Recorded July 14th 1866 Linn's Abstract Recorder S. C. O.