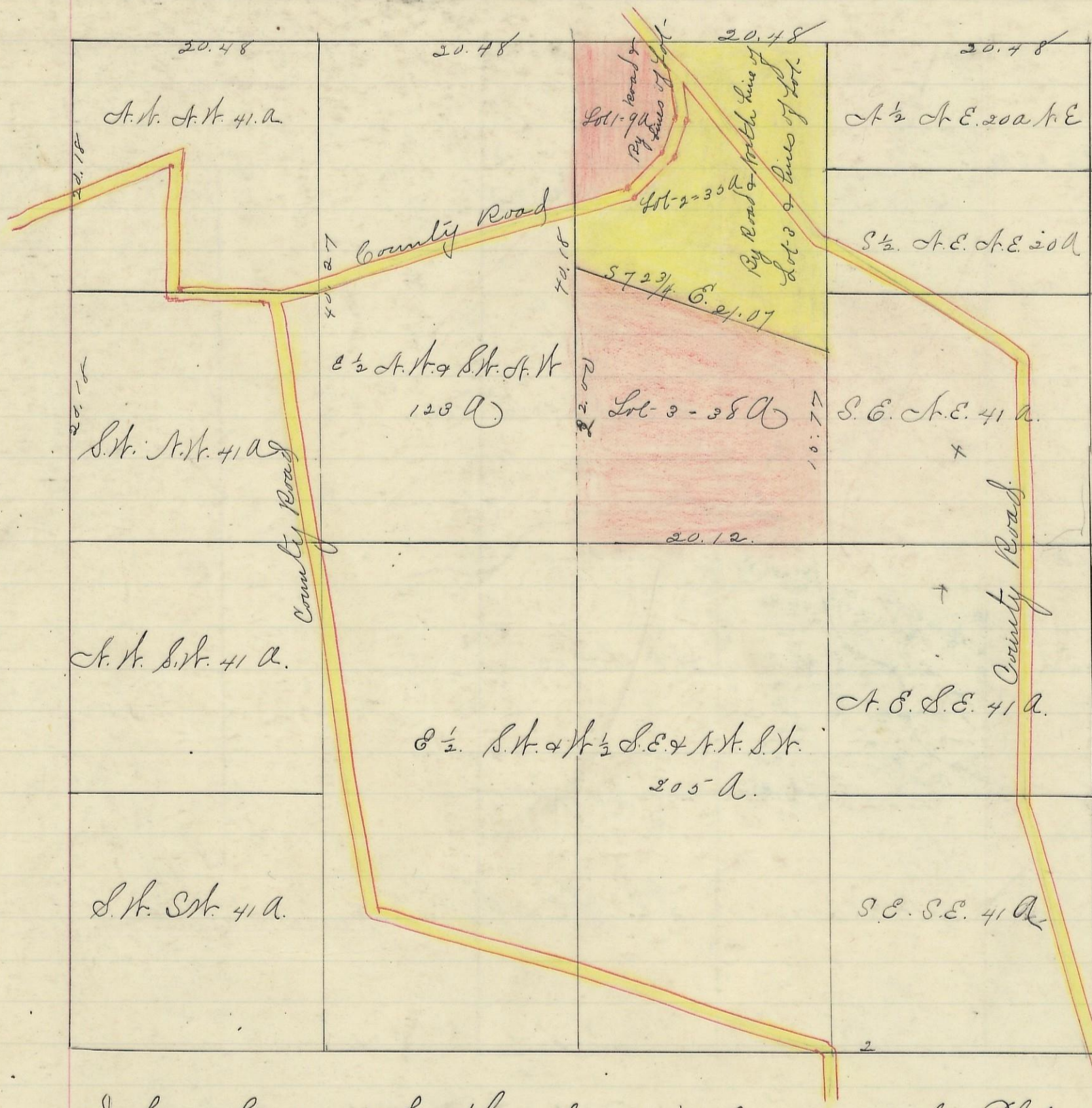


MARION, No. 15, Range 17, Section No. 20.



I here by certify the above to be a correct Plat of Fractional Lots in section No. 20. Township No. 15 Range No. 17.ocking County Ohio. Surveyed 1869 By Levi Davis Sur. C.C.W. Recd and Recorded. Dec. 26<sup>th</sup> 1883.

Jacob Weaver. Recorder. C.C.W.

I hereby Certify the above to be a true copy.

P. D. Sloan Recorder C.C.W.

The Above Plat transferred from Plat Book "A" Page 321. Record of Fractional Lots. C.C.W. June 5<sup>th</sup> 19<sup>th</sup>

P. D. Sloan Recorder C.C.W.