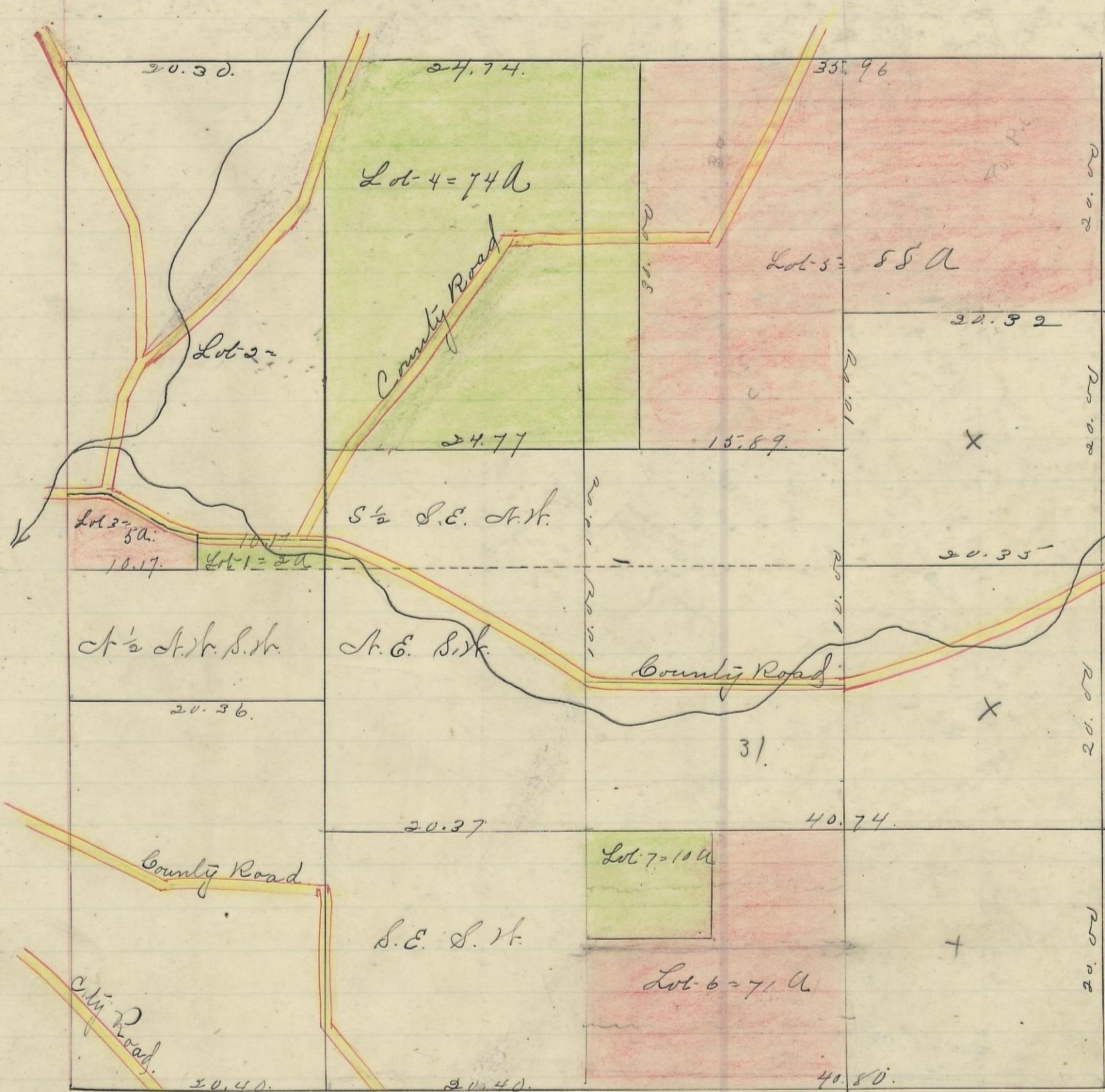


MARION, No. 15, Range 17, Section No. 28



Variation
1045' N.



Scale 10 chs to an inch

I hereby Certify the above to be a correct Plat of Fractional Lots in Section No. 28, Township No. 15, Range No. 17,ocking County Ohio. Surveyed. 1870. By Levi Davis Surveyor.

Rec'd and Recorded. Dec 26" 1883. Jacob. Weaver. Recorder, S. C. W.

I hereby Certify the above to be a true copy. P. D. Sloan. Recorder.

The Above Plat transferred from Plat Book "A" Page 327. Record of Fractional Lots. S. C. W. June. 6" 1901. P. D. Sloan Recorder S. C. W.