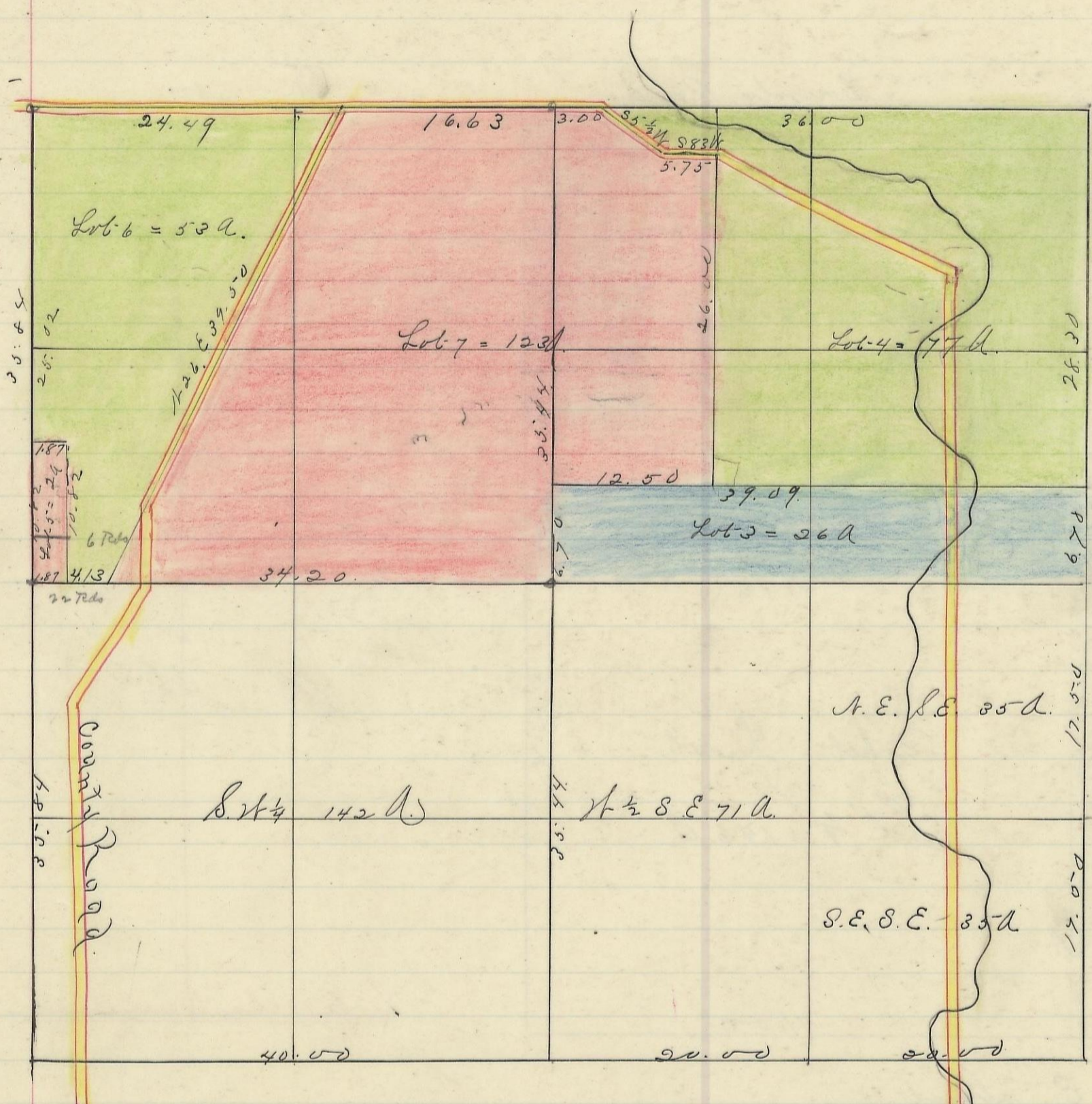


PERRY, No. 12, Range 19, Section No. 5



Variation
1° 30' N



Scale 1/8 inch to an acre

I hereby certify the above to be a correct Plat of Fractional Lots in Section No. 5 Township No. 12 Range No. 19.ocking County Ohio Surveyed 1869. By Levi Davis Surveyor S. C. B.
 Recd and Recorded April 21 1884.
 Jacob Weaver Recorder.

I hereby Certify the above to be a true copy.
 P. D. Sloan Recorder S. C. B.
 The above Plat transferred from Plat Book "A" Page 408 Record of Fractional Lots. S. C. B. June 7 1901
 P. D. Sloan Recorder.