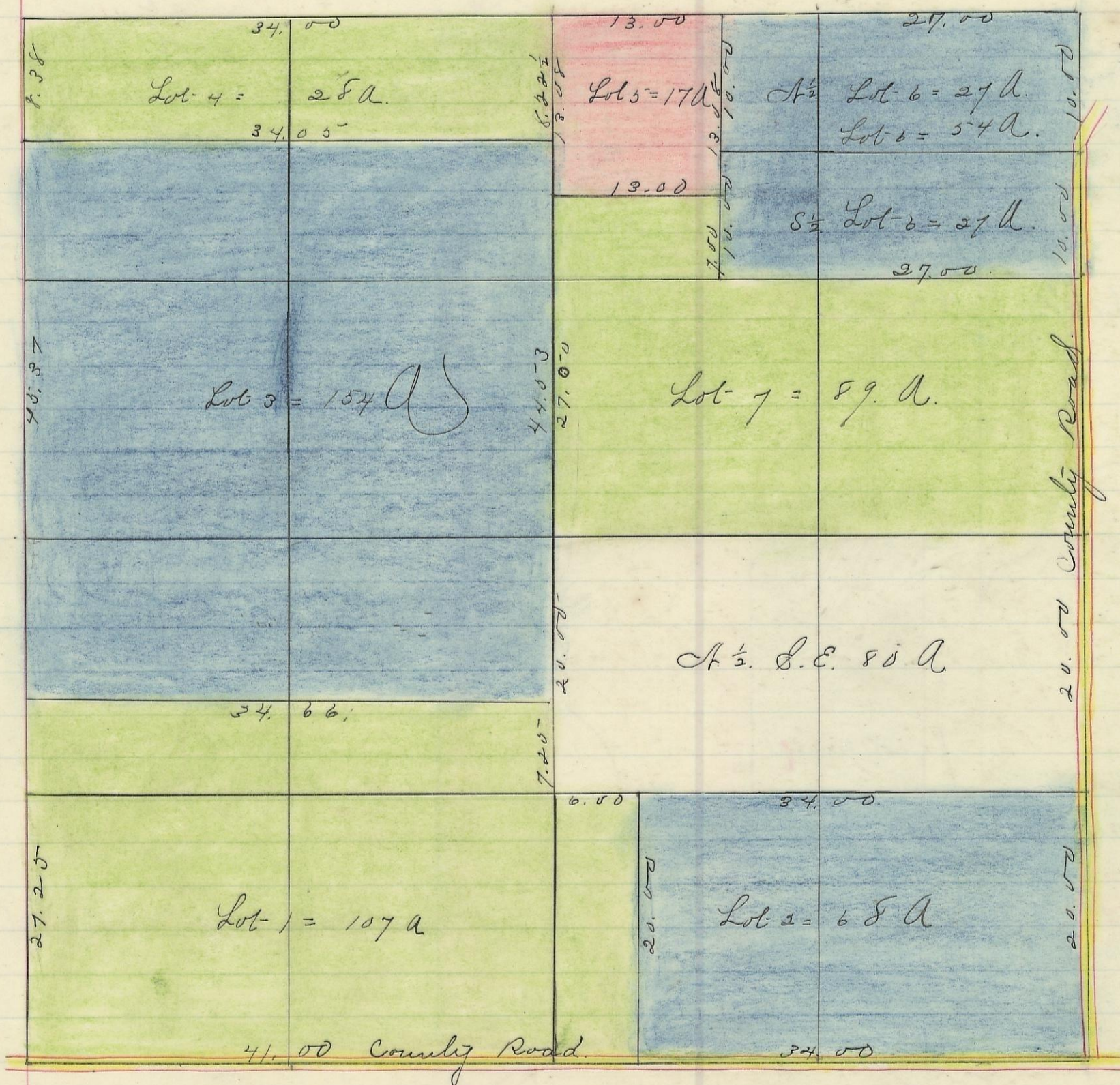


PERRY, No. 12, Range 19, Section No. 7



Variation
30 ft.

Scale 10 chains to an inch

I hereby certify the above to be a correct Plat of Fractional Lots in Section No. 7. Township No. 12. Range No. 19. Locking County Ohio. Plated from Deeds 1880. By Levi Davis Surveyor.

Rec'd and Recorded. April 3rd 1884.

Jacob Weaver. Recorder.

I hereby Certify the above to be a true copy.

P. D. Sloan Recorder. S. C. C.

The Above Plat transferred from Plat Book "A" page 430 Record of fractional Lots. S. C. C. June 8th 1901.

P. D. Sloan Recorder. S. C. C.