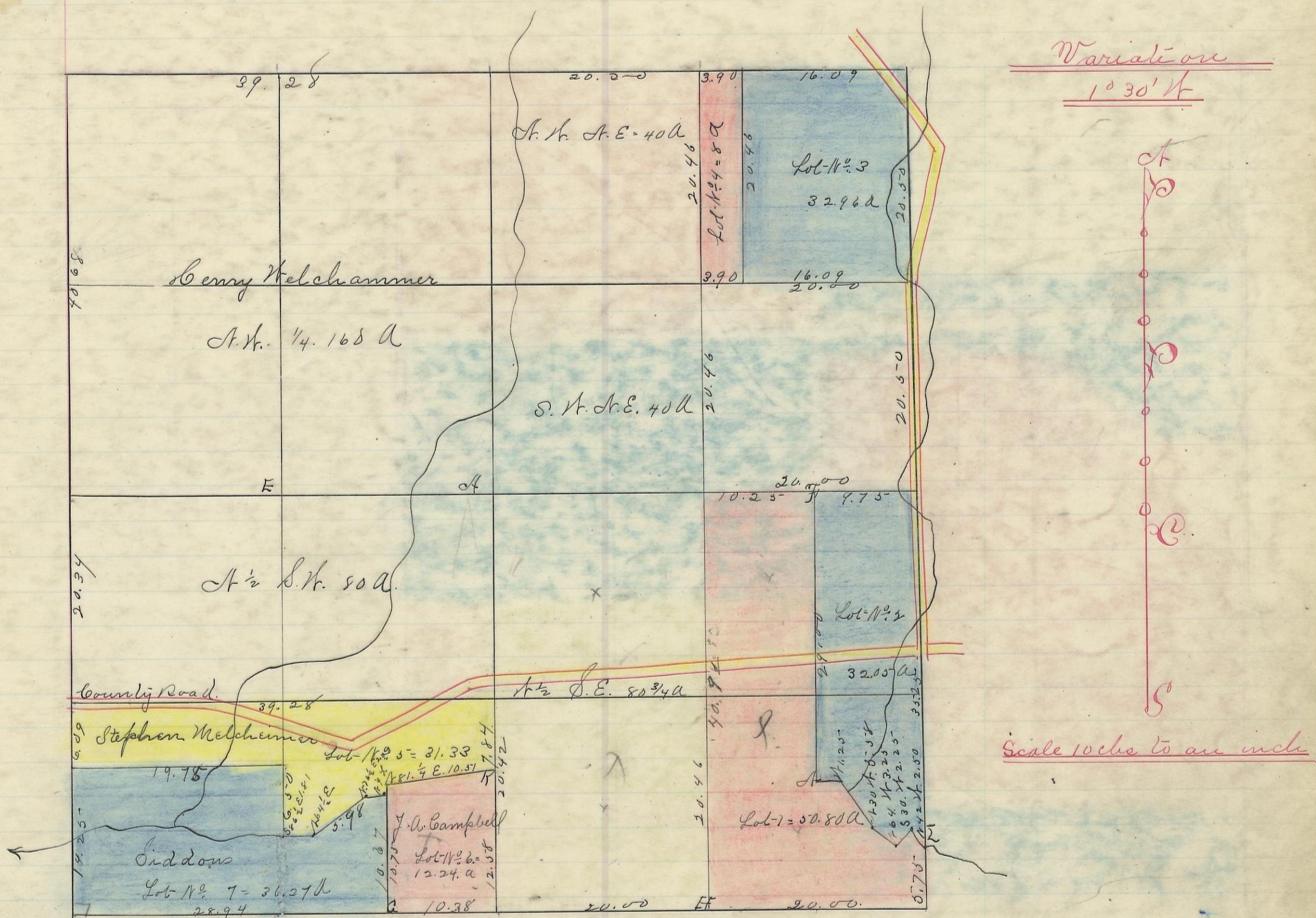


PERRY, No. 12, Range 19, Section No. 23



I hereby certify the above to be a correct Plat of Fractional Lots in Section No. 23. Township No. 12, Range No. 19,ocking County Ohio Surveyed 1869. By Levi Davis Surveyor. S. C. W.

Rec'd and Recorded. April 5<sup>th</sup> 1884.

Recorder. S. C. W.

- From L. to N. Ry. Creek.
- A. 42° N. 2.50 S 30 N. 2.25 - 164 N.
- 3.25 - 130. N. 0.00 + rest 1.25 =
- B. N. Oak. 3 N. 48 1/2 E 12 1/2 No 3 S 12 1/2 E 7
- C. N. Oak. 15 N. 5 1/2 N. 38 No 9 S 89 1/2 N 42 1/2
- F. Gum. 7 N. 64 E. 16 No. 9 N. 61 N. 47
- H. B. Oak. 6 N. 31 1/2 N. 20. Dick 12 S 63 1/2 N 40 1/2
- K. Ash. 20 N. 50 1/2 N 45 Sugar. 15 S 30 E 32

I hereby certify the above to be a true copy. P. D. Sloan Recorder S. C. W. The above Plat transferred from Plat-Book "A" page 442 Record of fractional lots. S. C. W. June 10<sup>th</sup> 1901 P. D. Sloan Rec<sup>d</sup> S. C. W.

Jacob Weaver. Recorder. S. C. W.