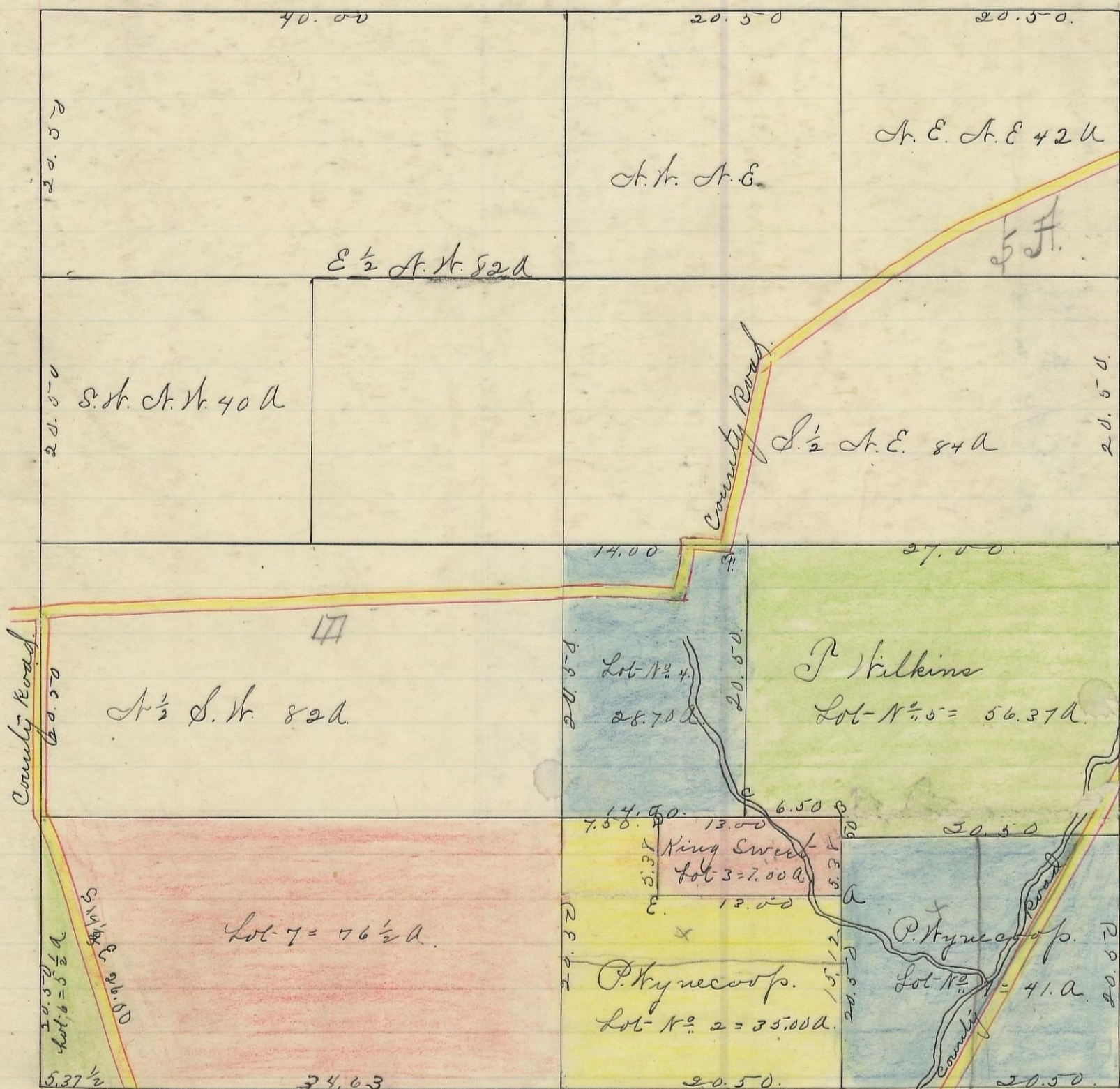


PERRY, No. 12, Range 19, Section No. 25



Variation
3030' N

41
1350
2750
1500
4250



27
15
42

Scale is this to an inch

I hereby certify the above to be a correct Plat of Fractional Lots in Section No. 25. Township No. 12. Range No. 19. Locking County Ohio. Surveyed 1869 By. Levi Davis Surveyor. S. C. C.

Rec'd and Recorded. April 5" 1884.

- A. Willow 3 S. 65 N 31 1/2.
- B. Oak. 6 372 N. 15
- Do. 4. N. 57 N 9 1/2.
- C. Willow 8 N. 77 E 47 1/2.
- N. oak Stump 10 South 35 1/2.
- D. Chest Oak. 20 N. 30 N 15.
- Do. 6 S. 23 E. 14 1/2.
- E. N. Oak. 20 N. 65 E 54.
- F. Chestnut 24. S. 28 N 19.

Jacob Weaver Recorder S. C. C.

I hereby certify the above to be a true copy. P. D. Sloan Recorder. S. C. C.
The above Plat transferred from Plat Book "A" Page 444. Record of fractional lots S. C. C. June. 11" 1901. P. D. Sloan Recorder S. C. C.