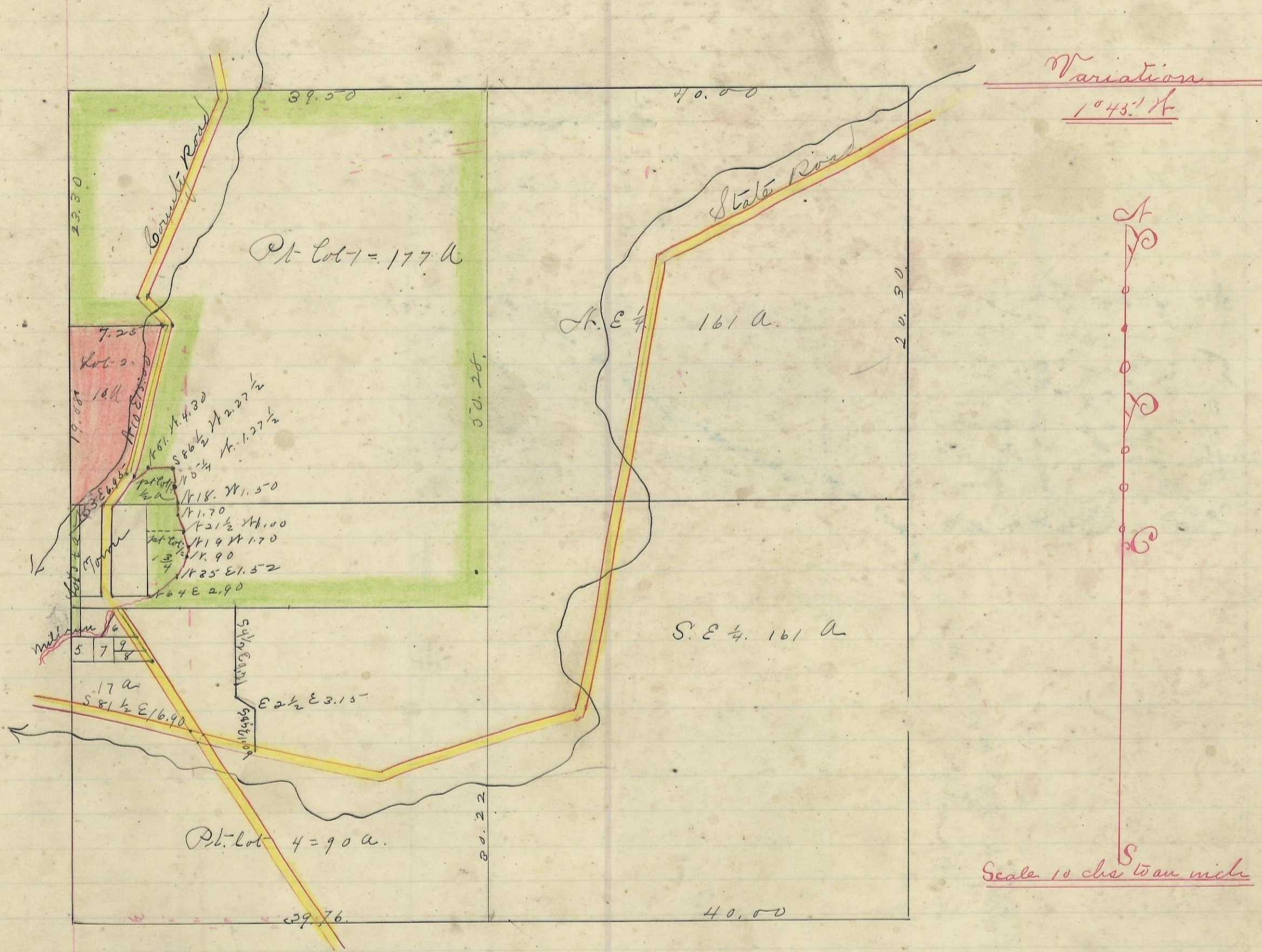


PERRY, No. 12, Range 19, Section No. 31.



I here by Certify the above to be a correct Plat of Section No. 31, Township No. 12 Range No. 19, Locking County Ohio. Surveyed. 1870. By
 Levi Davis Surveyor O. C. W.

Jacob Weaver. Recorder.

I here by Certify the above to be a true copy. P. D. Sloan Recorder. O. C. W.

The above Plat transferred from Plat-Book "A" page 448 Record of fractional lots O. C. W. June 11, 1901.

P. D. Sloan Recorder.