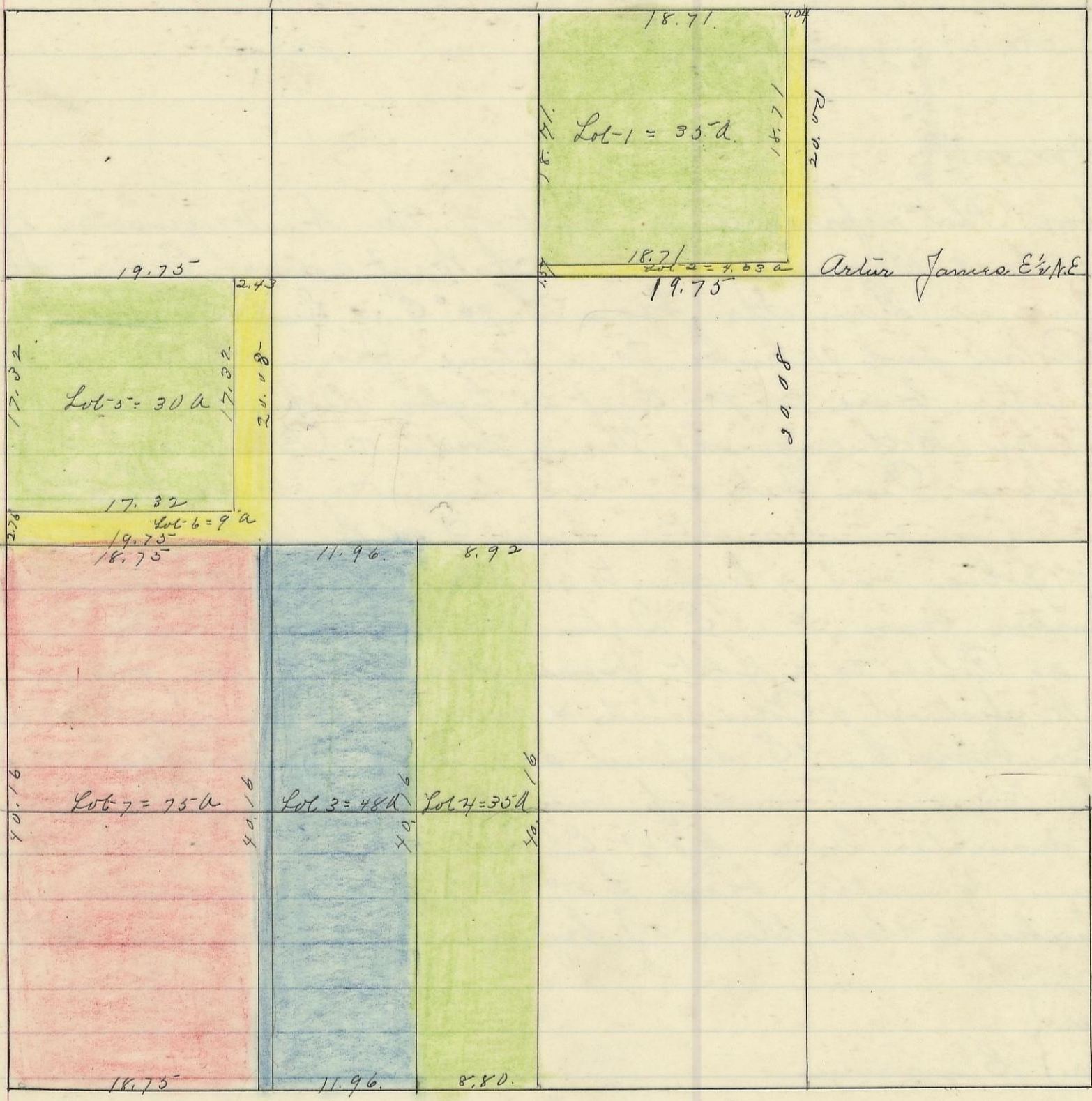


PERRY, No. 13, Range 19, Section No. 35



I hereby certify the above to be a correct Plat of Fractional Lots in Section
 N^o. 35 Township N^o. 13. Range N^o. 19.ocking County Ohio. Surveyed 1868.
 By Levi Davis. Sur. S. C. B.

I hereby certify the above to be a true copy.
 P. D. Sloan

Recorder S. C. B.

The above Plat transferred from Plat Book "A" page 76. Record of
 fractional Lots. S. C. B. June 14th 1901
 P. D. Sloan.