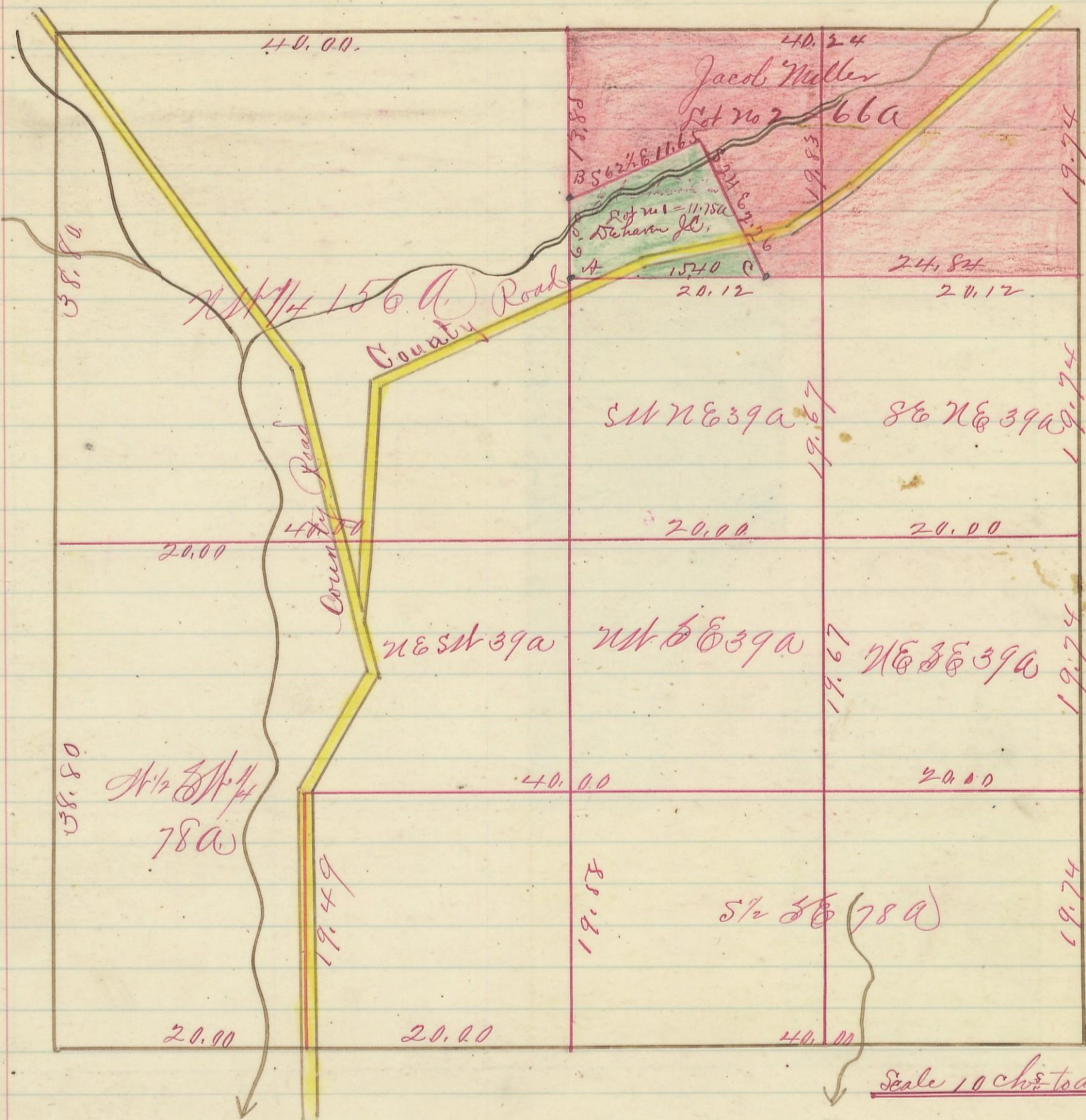


Section No 2 Township No 11 Range No 19.

63

Variation
1° 30' N.



Corner
Bearing
Diameter
Courses
Distances

Corner	Bearing	Diameter	Courses	Distances
A	Maple	20	S 46 E	53
	Sum	9	N 76 E	42
B	Hillow	3	N 75 E	40 1/2
C	H. Walnut	8	S 2 N	16

I hereby certify the above to be a correct
 Plat of Fractional Lots in Section No 2
 Township No 11 Range No 19.
 Hocking County Ohio.
 Surveyed 1869. By Levi Davis Surveyor H.C.O.

Received and Recorded March 15th 1884
 Jacob Weaver Recorder H.C.O.