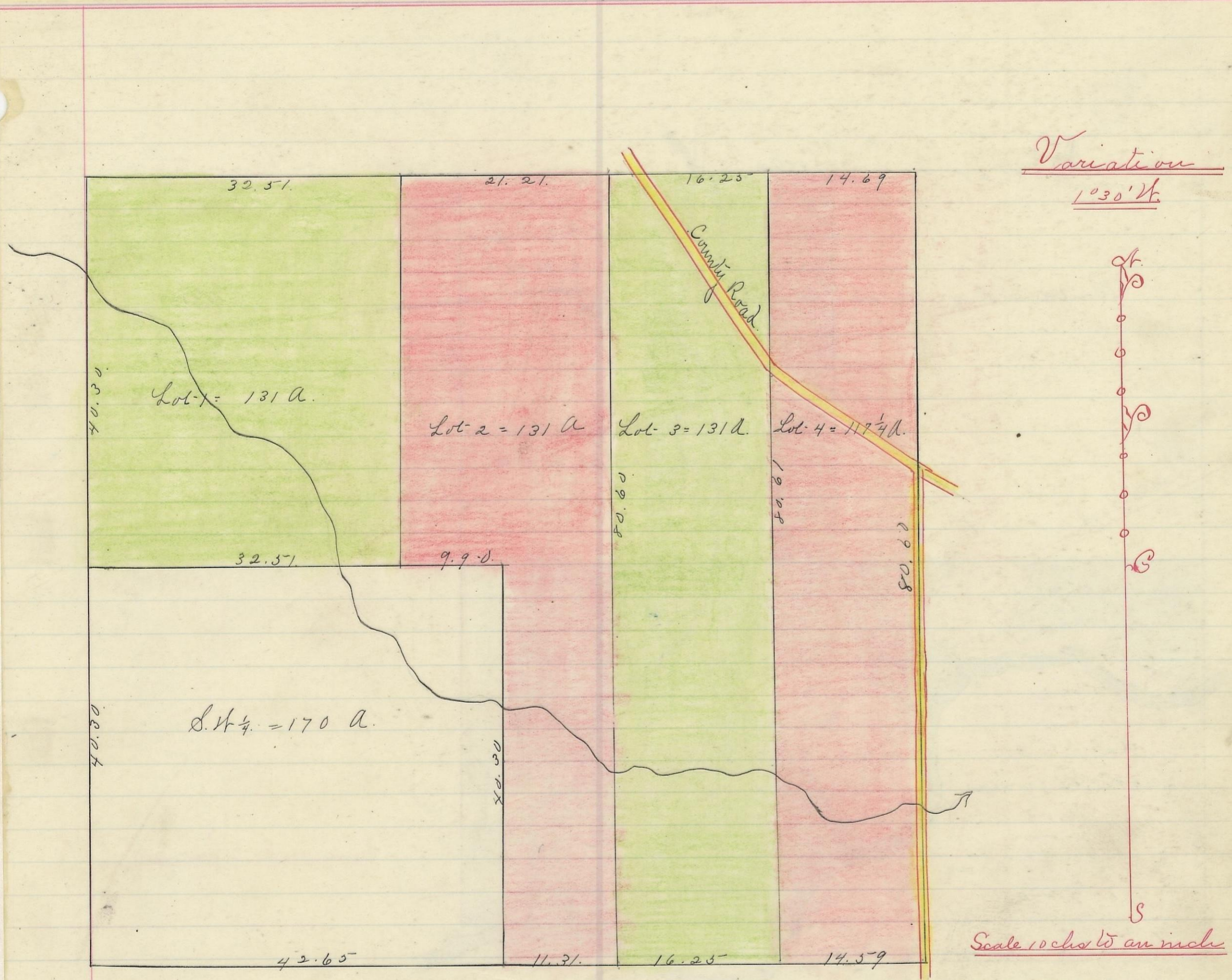


SALT CREEK, No. 11, Range 19, Section No. 8



Variation  
1°30' N

Scale 10 chs to an inch

I hereby Certify the above to be a correct Plat of Fractional Lots in Section No. 8. Township No. 11. Range No. 19. Jackson County Ohio. Surveyed. 1869.

By Levi Davis Surveyor. S. C. W.

Rec'd and Recorded March. 22<sup>nd</sup> 1884.

Jacob Weaver. Recorder.

I hereby certify the above to be a true copy.

P. D. Sloan Recorder. S. C. W.

The above Plat transferred from Plat Book "A" page 408. Record of fractional lots. S. C. W. June 17<sup>th</sup> 1901.

P. D. Sloan.