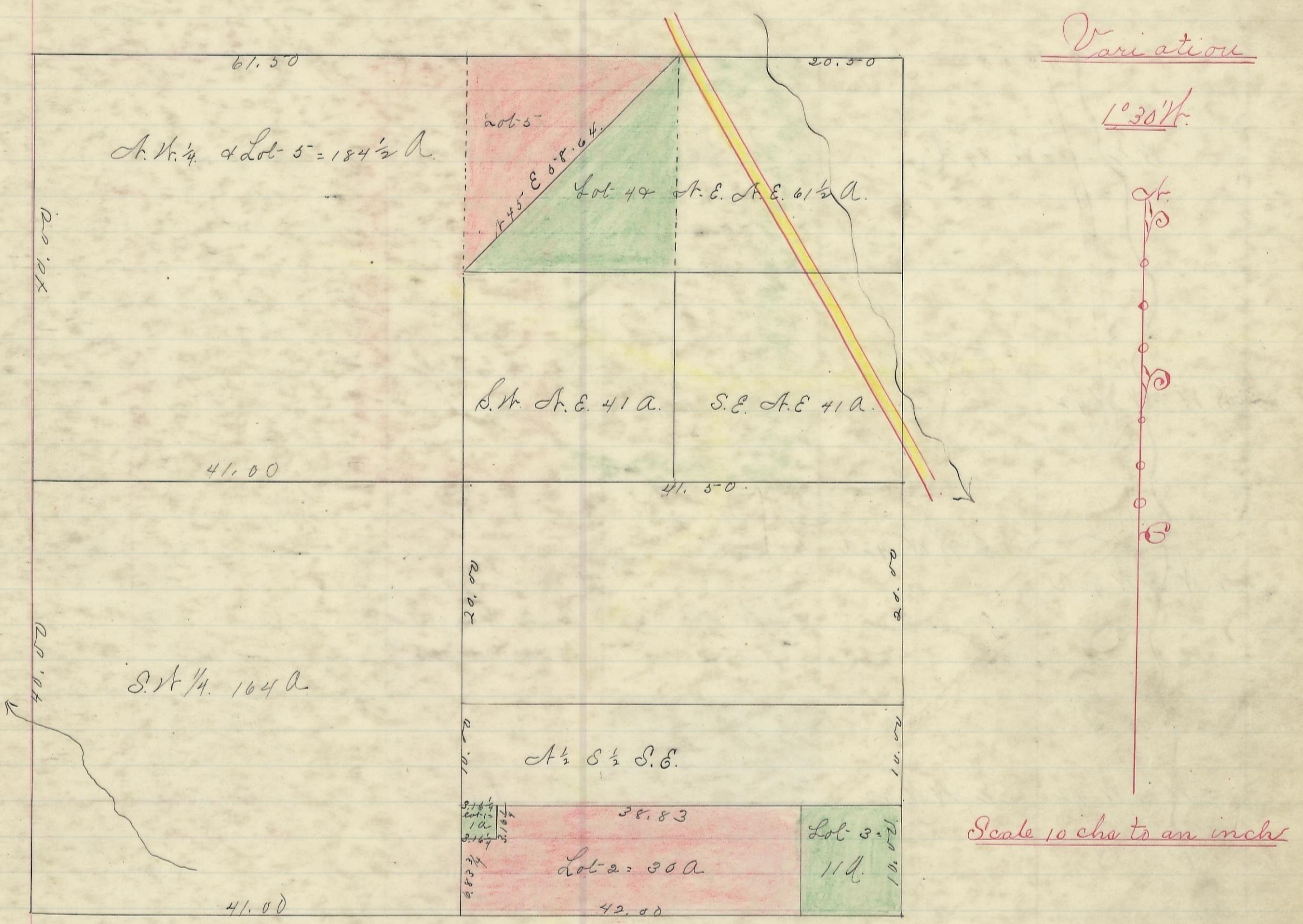


SALT CREEK, No. 11, Range 19, Section No. 25



I hereby Certify the above to be a correct Plat of Fractional Lots in Section No. 25 Township No. 11. Range No. 19. Locking County Ohio. Surveyed. 1870. By Levi Davis Surveyor. S. C. C. Recorder and Recorded March 28<sup>th</sup> 1884. Jacob Weaver Recorder.

I hereby Certify the above to be a true copy. P. D. Sloan Recorder. S. C. C. The Above Plat transferred from Plat Book "A" Page 418. Record of Fractional Lots. S. C. C. June. 26<sup>th</sup> 1901. P. D. Sloan Recorder. S. C. C.