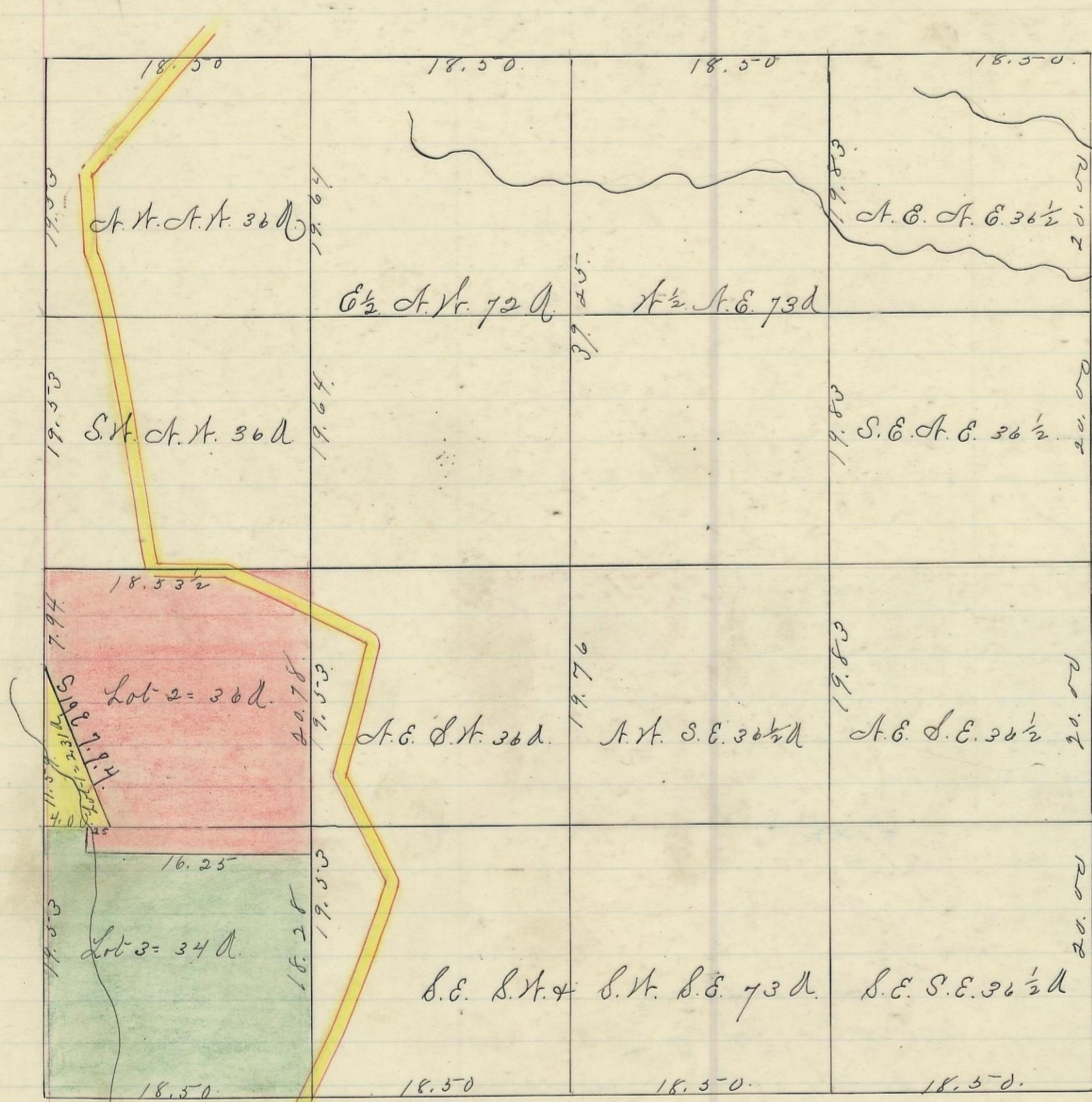


SALT CREEK, No. 11, Range 19, Section No. 28.



Variation
1°30' N



Scale 10 chs to an inch

I hereby certify the above to be a correct Plat of Fractional Lots in Section No. 28, Township No. 11, Range No. 19, Locking County Ohio, Surveyed 1869 by Levi Davis Surveyor, S.C.W.
 Rec^d and Recorded March 28th 1884.

Jacob Weaver Recorder, S.C.W.

I hereby certify the above to be a true copy.
 P.D. Sloan Recorder.

The above Plat transferred from Plat Book "A" page 420. Record of Fractional Lots, S.C.W. June 28th 1901.
 P.D. Sloan Recorder, S.C.W.