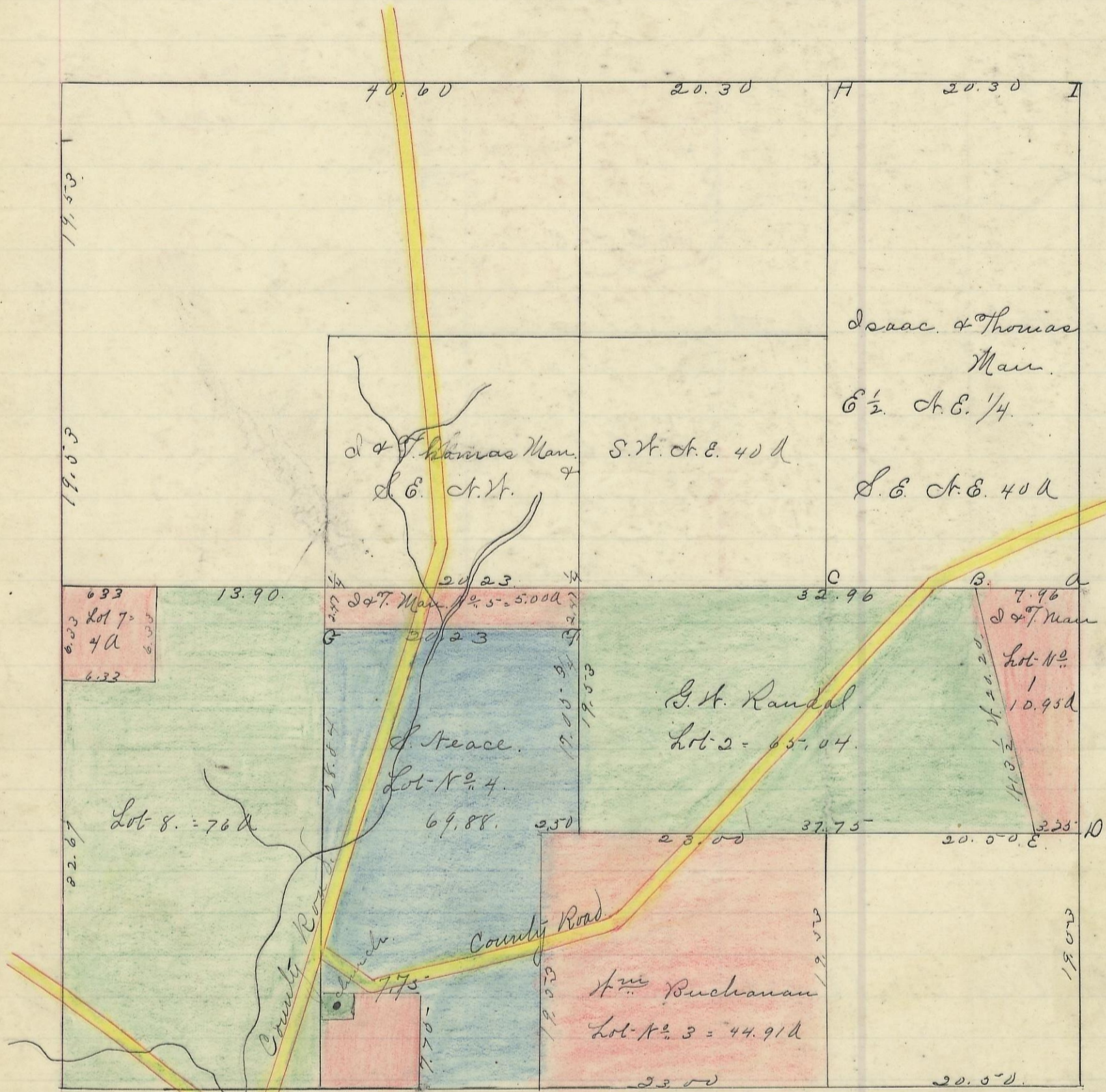


For Second Plat of This Section See page 329.



Variation  
1° 30' N

Scale 10 chs to an inch

I hereby certify the above to be a correct Plat of Fractional Lots in Section No. 29, Township No. 11, Range No. 19, Rocking County Ohio. Surveyed 1869.

By Levi Davis Surveyor. S. C. W.  
Received and Recorded March 31<sup>st</sup> 84.  
Jacob Weaver, Recorder

Corner	Bearing	Diameter	Course	Distance
A	Sum	6	S 40 E	58 1/2
	Maple	8	S 70 E	48
B	Hickory	3	S 4 E	11 3/4
C	Locust	6	S 31 1/2 N	23
D	Chestnut	8	S 67 N	42 1/2
	Locust	2	N 45 N	12
	B. Oak	2	N 70 1/2 N	20
	B. Oak	7	S 57 N	24 1/2
F	Hickory	6	N. 22 N	45 1/2
G	Hickory	4	S 25 E	19 1/2
	N. oak	7	N. 80 E	39
H	N. oak	10	N 31 N	6
	Poplar	16	S 29 E	22
I	Boxwood	3	corner	

Remarks

I hereby certify the above to be a true copy. P. D. Sloan

The above Plat transferred from Plat Book No. 1 Page 421. Record of fractional lots. S. C. W. June 28<sup>th</sup> 1901.

P. D. Sloan  
Recorder. S. C. W.