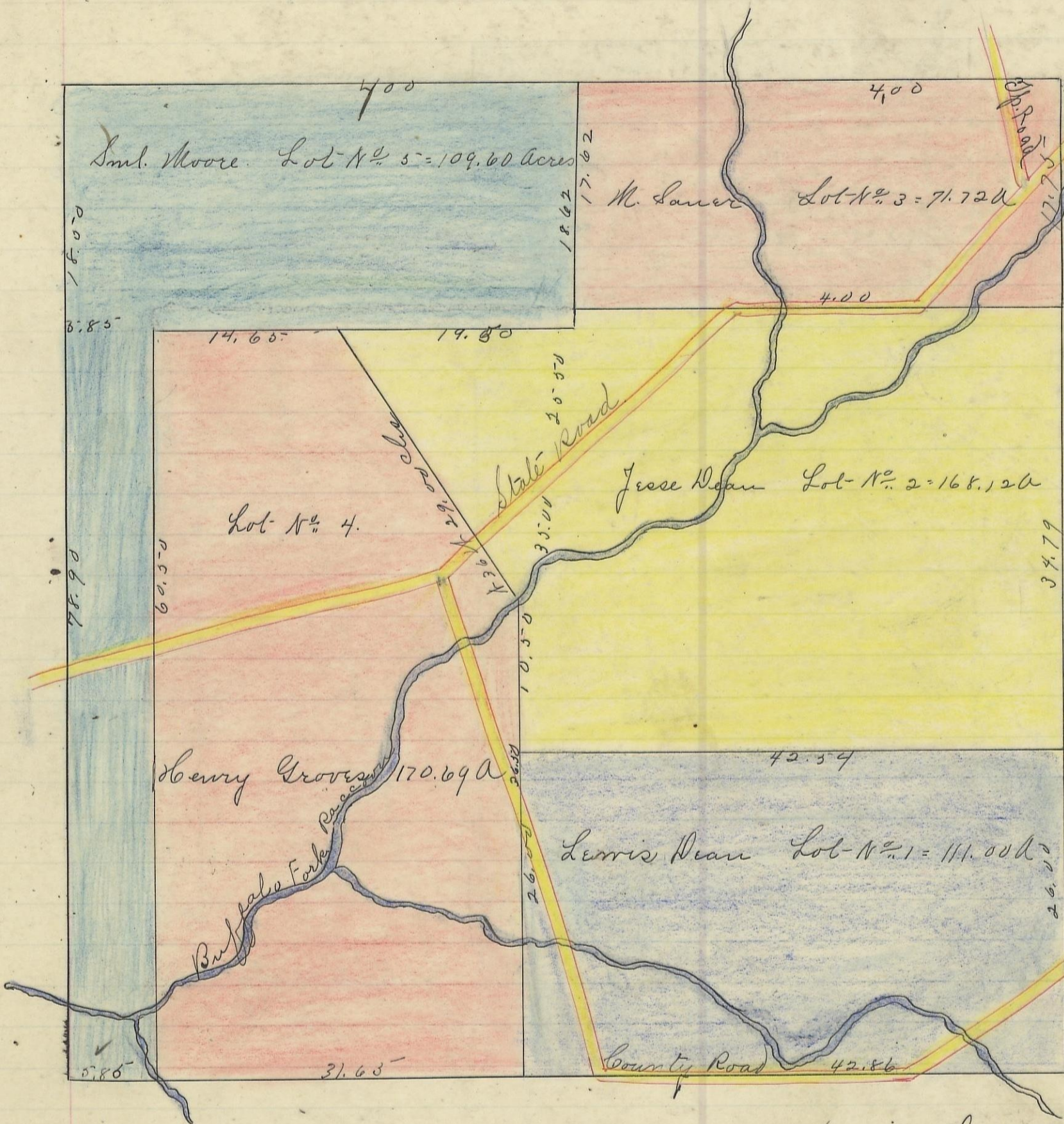
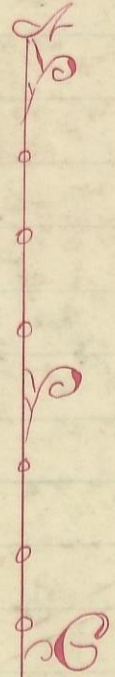


STARR, No. 12, Range 16, Section No. 9



Fractions
2nd H.



Scale 12 Echs to an inch

I hereby Certify the above to be a correct Plat of Fractional Lots in Section No. 9, nine, Township No. 12, Range No. 16, Ohio Companies Purchase Locking County Ohio containing 631.13 acres, Surveyed A. D. 1869.

	Lewis Dean Lot No. 1. 111.00 A.
	Jesse Dean " " 2 168.12 "
	M. Sauer. " " 3. 71.72 "
	Henry Groves " " 4. 170.69 "
	Sml. Moore " " 5. 109.60 "
	Total. 631.13 A.

By Levi Davis Sur. G. C. W.

Recorded January 10th 1870. by J. E. Smart.

Recorder, Locking Co. W.

I hereby Certify the above to be a true copy.

P. D. Sloan

See original page 128