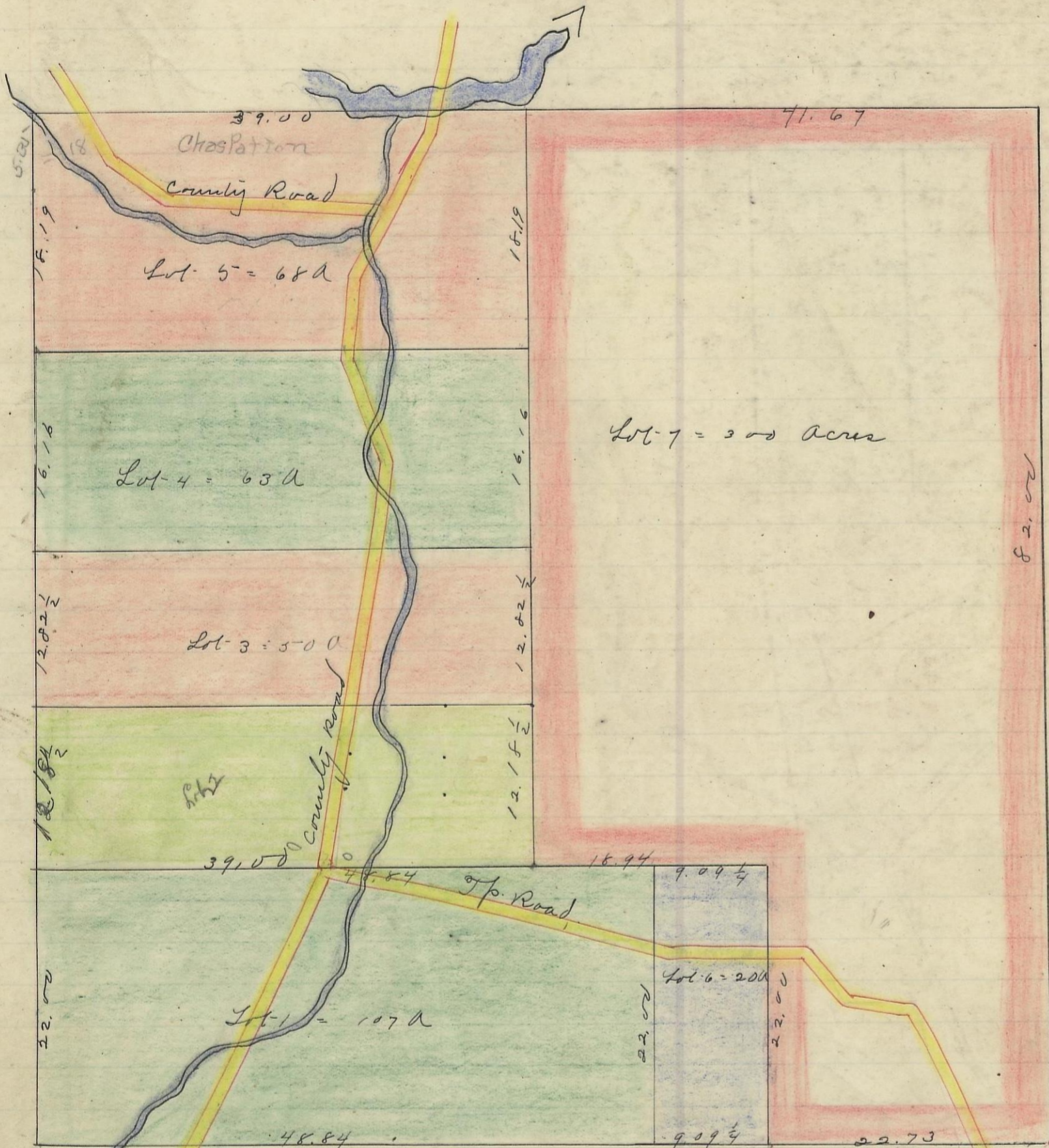


STARR, No. 12, Range 16, Section No. 11



Variations
2014



Scale 1 inch to 100 feet

I hereby certify the above to be a correct Plat of Fractional Lots in Section No. 11, Township No. 12, Range No. 16, Ohio Companies Purchase,ocking County Ohio Surveyed 1870.
By Levi Davis Surveyor S.C.W.

I hereby certify the above to be a true copy.
P.D. Sloan Recorder.

The above Plat transferred from Plat Book "A" Page 78. Record of fractional Lots S.C.W. July 10. 1901.
P.D. Sloan Recorder S.C.W.