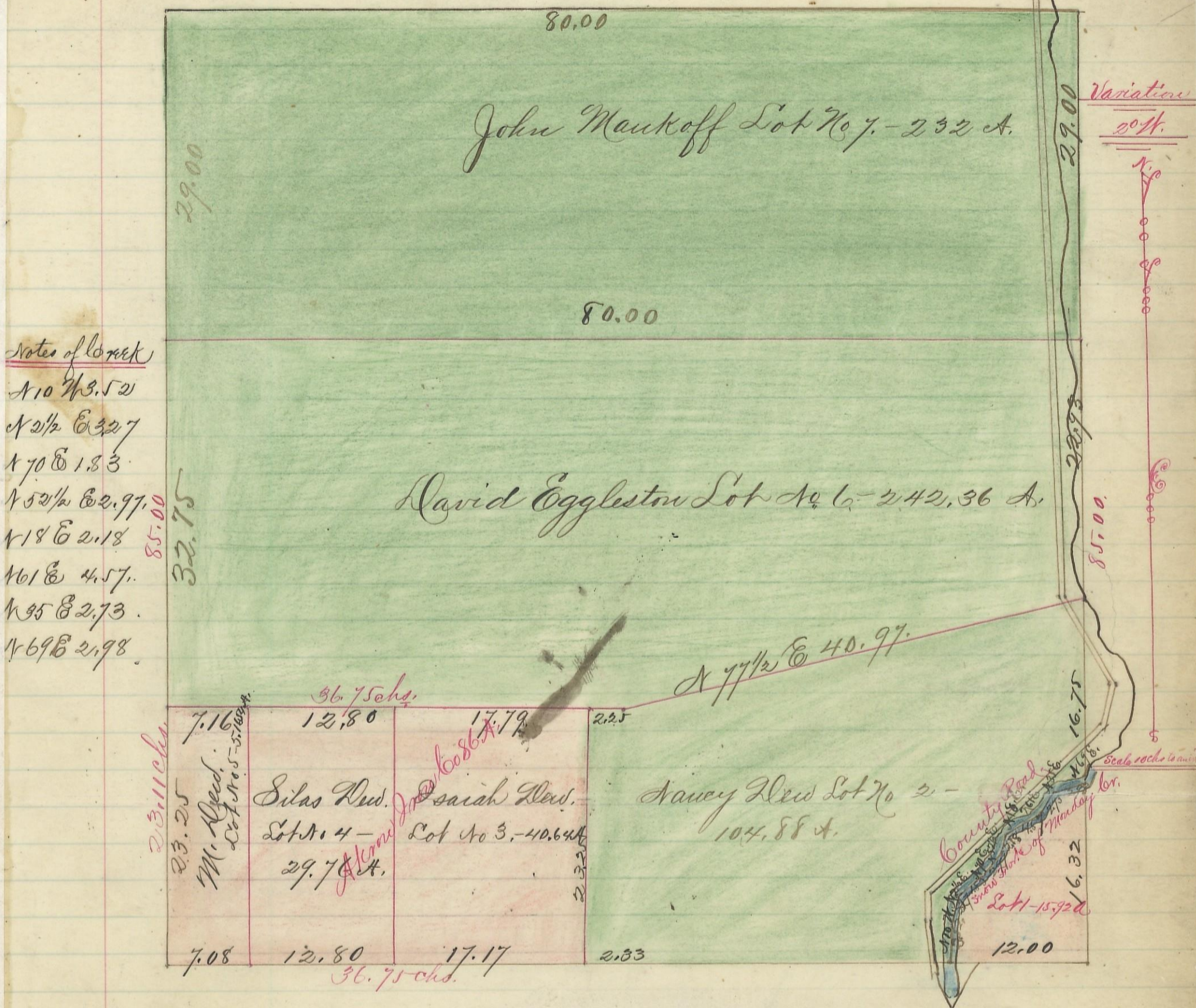


SECTION No. 1. TOWNSHIP No. 13 RANGE No. 15.



Whereby certify the above to be a correct Plat of Fractional Lots in Section No. 1 Township No. 13, Range No. 15 Woking County Wis.

Surveyed 1870 By Levi Davis Surveyor.

Received April 30th 1883 at 6 o'clock P.M.

Recorded May 11th 1883

Jacob Warner Recorder