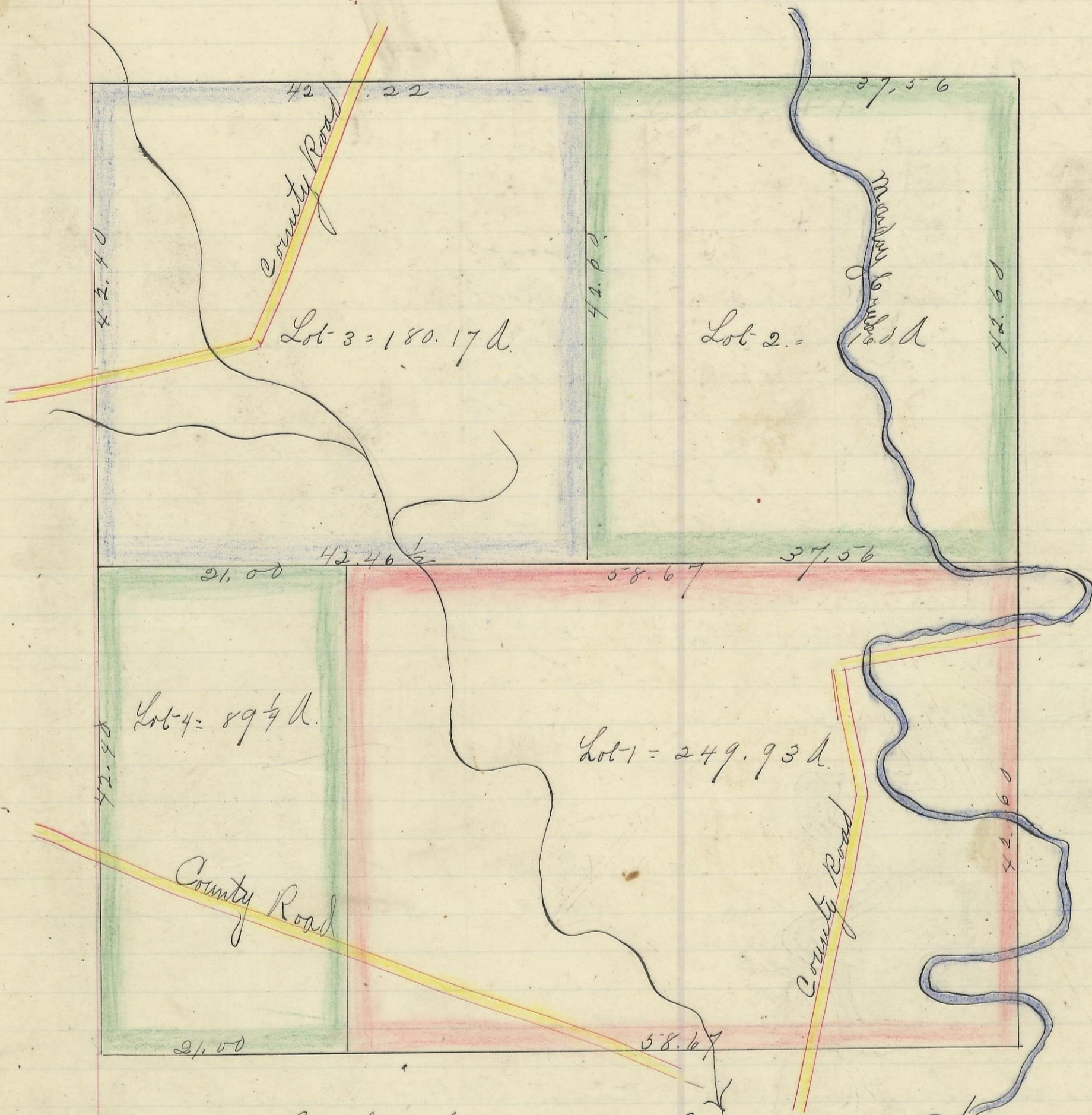


WARD, No. 13, Range 15, Section No. 13.



Variations  
2 1/4"



Scale 10 chs to an inch

I hereby Certify the above to be a correct Plat of Fractional Lots in Section No. 13 Township No. 13 Range No. 15 Ohio Company Purchase Locking County Ohio Surveyed 1870. By Levi Davis Surveyor.  
 Received April 30<sup>th</sup> 1883 at 6 o'clock P.M.  
 Recorded May 12<sup>th</sup> 1883.  
 Jacob Weaver - Recorder S.C.C.

I hereby Certify the above to be a true copy.  
 P.D. Sloan  
 The Above Plat transferred from Plat-Book "A" Page 263 Record of Fractional Lots S.C.C. July 16<sup>th</sup> 1901.  
 P.D. Sloan Recorder S.C.C.