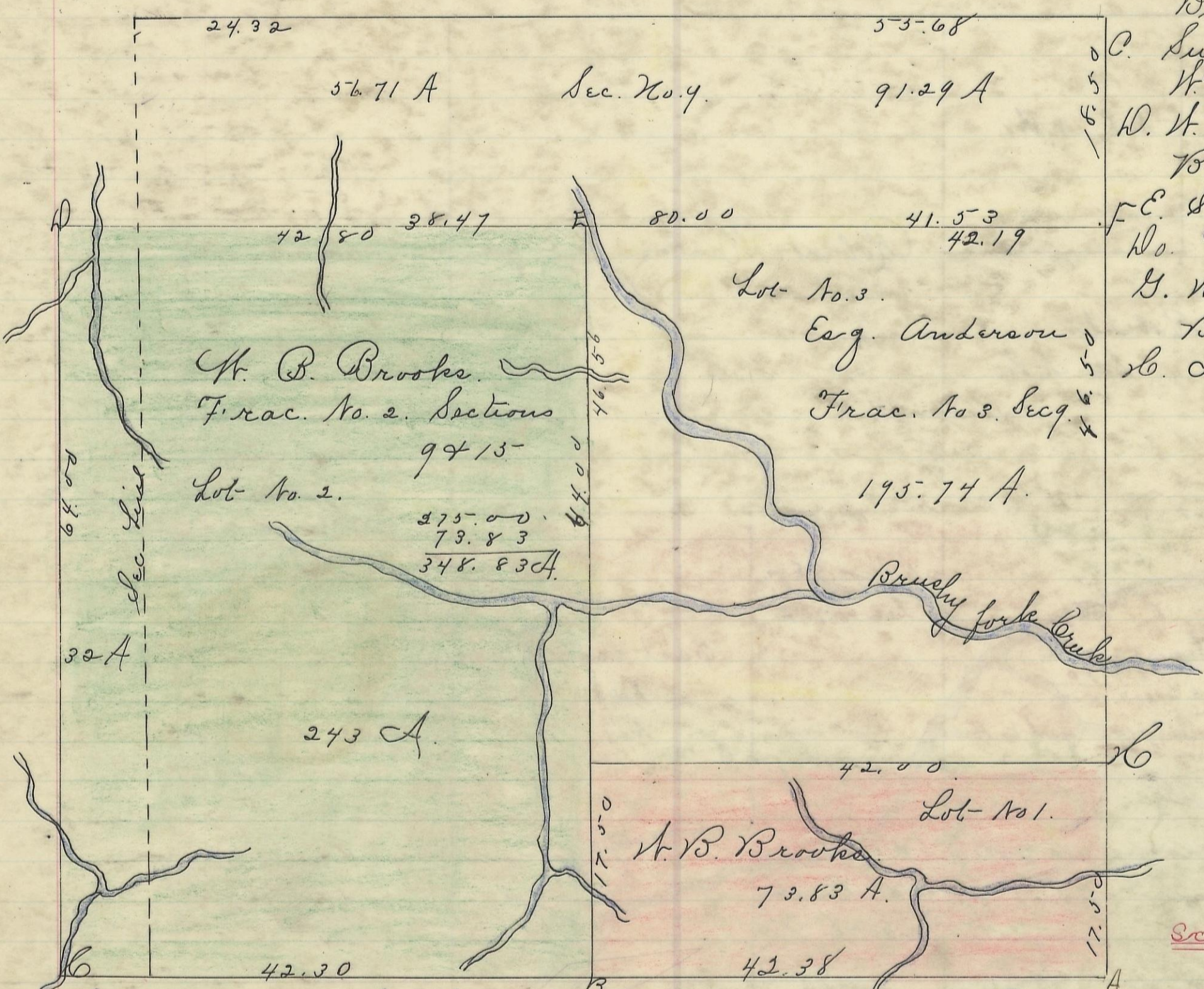


WARD, No. 13, Range 15, Section No. 9 & 15

Fraction 2 south end of Fraction No. 3 Sections 9 & 15. Township No. 13. Range No. 15. Ohio Company purchase. Bearing trees at corners



- A. Post-Beech 12 in N. 20 W. 39 Lk
- Gum 12 " " N 39 E 19 "
- B. White Oak 14 " " N. 57 E 12 "
- Beech 8 " " N 88 W 25 "
- C. Sugar 14 " " N. 38 1/2 E 31 "
- W. Oak 5 " " N 9 W 17 "
- D. W. Oak 40 " " N 61 W 59 1/2 "
- Beech 18 " " N 60 E 5 "
- E. Sycamore 40 in N. 36 W 60 "
- No. 50 " " S 38 W "
- G. W. Oak 20 " " S 19 E 5 "
- B. Oak 9 " " N. 8 1/2 W 13 "
- H. Iron Wood 2 in N
- No. 2 " "

Variation 1° 30' N.

Scale 10 chs to an inch

I hereby certify the above to be a correct Plat of Fraction No. 2 Sections No 9 & 15 Township No. 13. Range 15 Ohio Company purchase Shocking County Ohio containing 275 Acres also 73.83 Acres off of the South end of Fraction No. 3. same Township and Range, containing in all 348.83 Acres. Surveyed at the instance of A. B. Brooks May 1867.

By Levi Davis Sur. S. C. O.
Received and Recorded Oct 17 1872 by J. E. Smart Rec^{dy} S. C. O.

I hereby certify the above to be a true copy.
P. D. Sloan
The Above Plat transferred from Plat Book "A" page 180
Record of fractional Lots S. C. O. Aug 7 1901.
P. D. Sloan Recorder S. C. O.