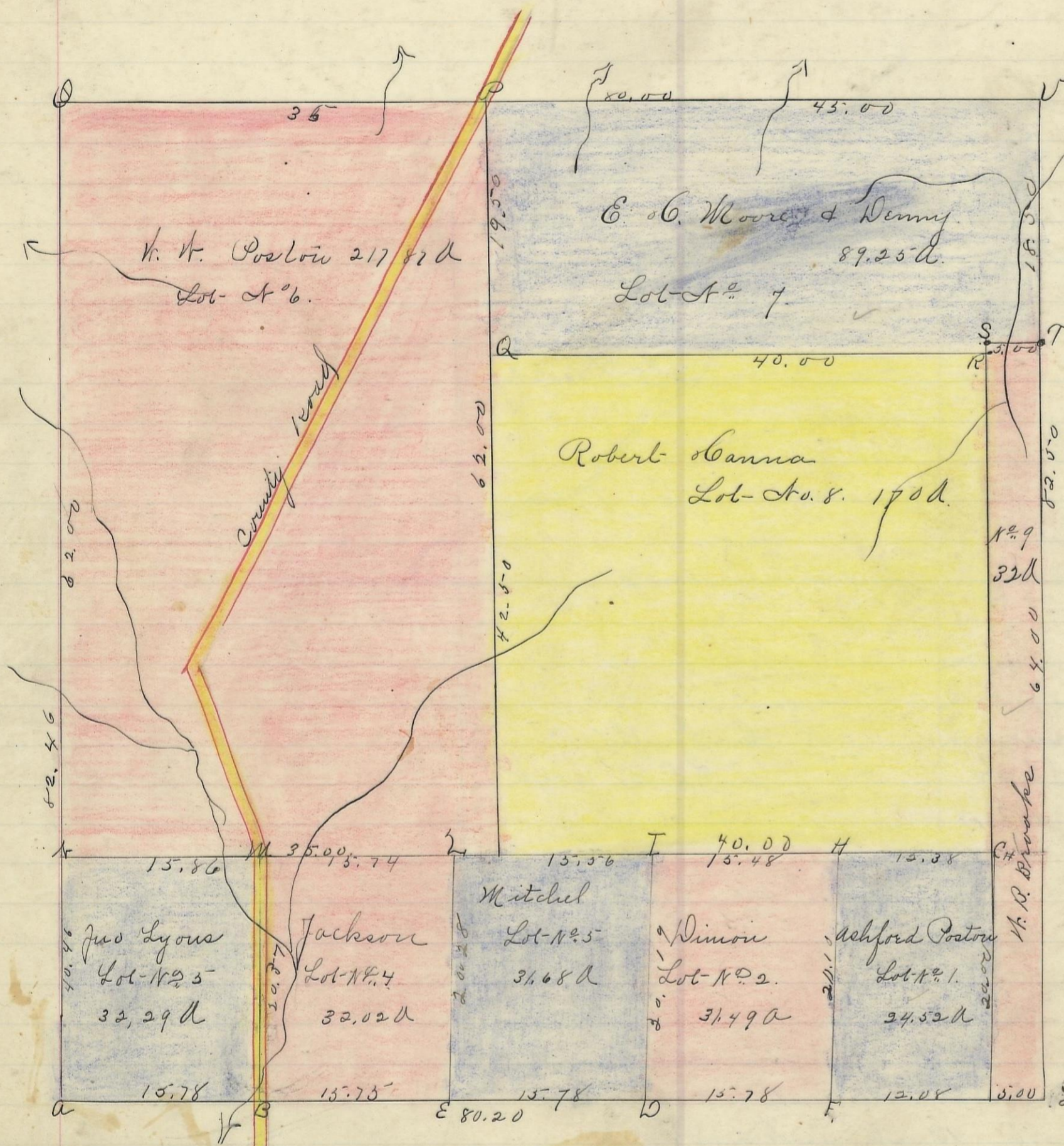


WARD, No. 13, Range 15, Section No. 13

For Second Plat of Sec. 15 & 9 See Page 429



- A. Ches. oak 15 N. 15 N. 45 Do 12 S 43 E 23-
- B.
- C.
- D.
- E.
- F.
- G.
- H.
- I.
- K. Beech 14 S 70 E & Poplar 80 S 72 N. 31
- L.
- M.
- N. W oak 7 N. 28 N. 21 Do 6 S 57 E 8 1/2
- O. W oak. 24. S 13 N. 7 maple 14 S 21 N. 2 1/2
- P. Ches oak. 18 N. 22 E 3 1/2 Do 20 S 20 N 41
- Q.
- R.
- S. N. oak 40 N. 61 N. 59 1/2 Beech 18 N. 60 E 1/2
- T. Beech 16. S 62 W 21. W oak. 24 S 21 E 40 1/2

I hereby certify that the foregoing to be a correct Plat of Fractional Lots in Section No. 15 Township No. 15 Range No. 15 Ohio Companies purchase Stocking County Ohio containing 660 1/4 Acres Surveyed 1870.

by Levi Davis Sur. S. C. O.

Received and Recorded March 4th 1874. by

- Ashford Poston No. 1 = 24.52 a.
- Dimou " 2 = 31.49 a.
- James Mitchell " 3 = 31.68 a.
- Jackson " 4 = 32.02 a.
- John Lyons " 5 = 32.29 a.
- H. H. Poston " 6 = 217.00 a.
- E. M. Moore & Denny " 7 = 89.25 "
- Robert-Hanna " 8 = 170.00 "
- H. B. Brooks " 9 = 32.52 "
- Total 660.25 "

J. C. Smart Recorder S. C. O.
 The above Plat transferred from Plat-Book "A" page 106. Record of Fractional lots S. C. O. July 10" 1901. and certified to be a true copy by
 O. D. Sloan
 Recorder S. C. O.