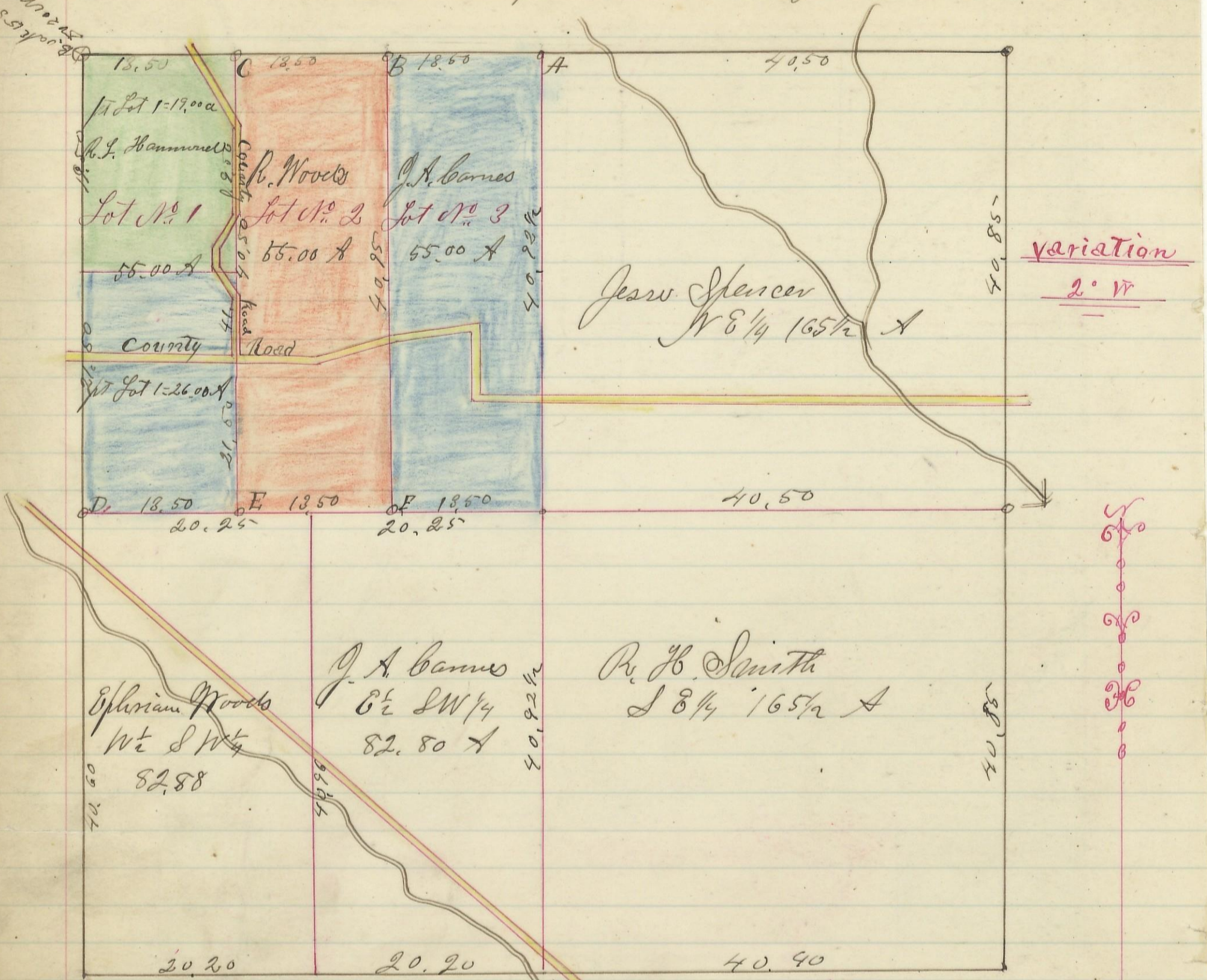


Section No. 17 Township No. 13 Range No. 15.



- A Chestnut dump 26 N 30 E 40 1/4 Beech 12 N 56 W 15 1/2
- B Wash 10 N 77 1/2 E 27 1/4 B. oak 16 W 81 1/4
- C Beech 10 S 56 W 120
- D Wash 12 North 20 Elm 9 N 62 W
- E Oak 12 S 87 W 5 20 18 N 45 E 24 1/2
- F Hickory 22 S 66 W 27 Do 13 N 37 E 28 1/2
- G Oak 12 N 55 W 12 1/2 Gum 10 S 6 E 87 1/2

scale of 10 chs to an inch
 10 20

I hereby certify the above to be a correct Plat of fractional Lots in Section No. 17 Township No. 13 Range No. 15 Ohio Company Purchase, Hocking County Ohio. Surveyed 1870

By Levi Davis Surveyor.

Recd and Recorded Nov. 94 1883.

Jacob Weaver Recorder