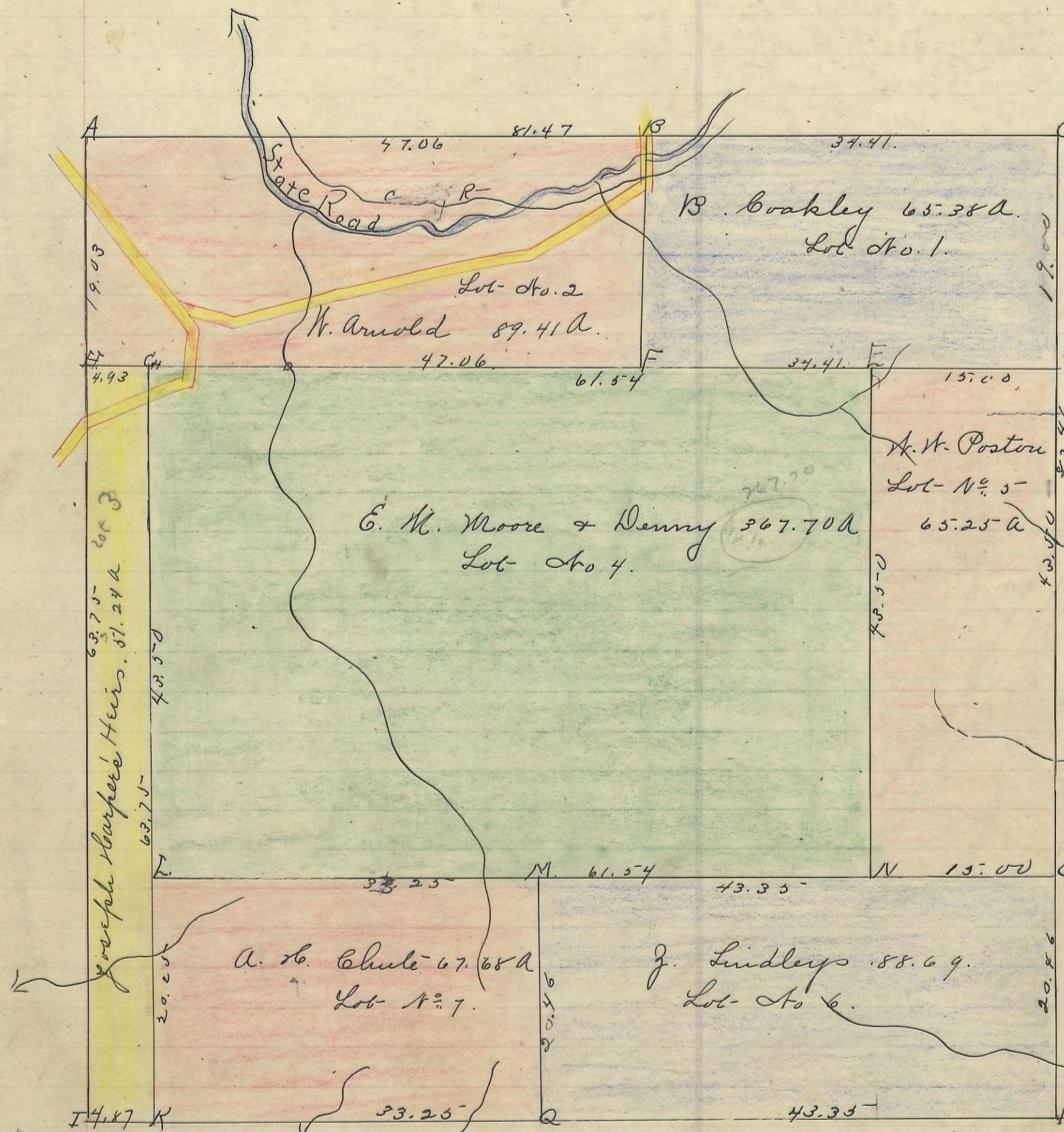


WARD, No. 13, Range 15, Section No. 21.

187
3275
38.17



- A. Beech. 15 N. 82 W. oak 9 S 81. 24 1/2
- B. Beech. 12 S 52. N 23 1/4 Gum 14 N. 1 W 44
- C. N. oak. 24. N. 13 W. 7 maple 14 S 31 N 20 1/2
- D. ash. 7 S 87 W 10, Hickory 14 N 79 E 16 1/2
- E. N. oak 5 6 3 4 5 N. 51 W. 6 S. 18 E 1 3/4
- F. Sugar 16 west-17 W 11, N 46 E 33 1/2
- G. Hickory 12. N. 26 W. 23 1/2 W. 18, S 45- N 21.
- H. Poplar. 18. N. 86 W. 26 1/4 Beech 11 S 37 E 39
- I. ash. 20 S 5- N. 21.
- K. Buckeye 2 1/2 S 71 N 3. B. mal. 4 S 70 E 26
- L. ches. oak. 10 S 49 N 15 W. N 5- E 4
- M. Beech. 12 S 29 1/2 E 39 W 10 N 61 1/2 E 31 1/2
- N. W. oak. 30 S 47 N 12 Gum 8 N 3 E 14.
- O. W. oak. 11 28 W 21 W 6 S 57. E 8 1/2
- P. ches. oak 12 S 42 E 25- W 16 N 15- W 43.

Variation
20 N



Scale 10 chs to an inch

I hereby certify the above to be a correct Plat of Fractional Lots in Section No. 21 Township No. 13 Range No 15 Ohio Companies Purchase Crocking County Ohio containing 675.35 Acres Surveyed February 1870 by Levi Davis. Sur. S. C. W. Recorded February 18th 1870 by

J. C. Smart. Recorder S. C. W.

B. Coakley Lot No. 1 =	65.38 A.
N. Arnold " 2 =	89.41 "
Joseph Harper's heirs " 3 =	31.24 "
E. M. Moore & Denny " 4 =	267.70 "
A. W. Poston " 5 =	66.25 "
J. Lindley heirs " 6 =	88.69 "
A. S. Clute " 7 =	67.68 "
Total	675.35 A

I hereby certify the above to be a true copy. Peter Douglass Sloan The Above Plat transferred from Plat- Book "A" page 160 & 161. Record of fractional lots S. C. W. July 18" 1901. P. D. Sloan Recorder