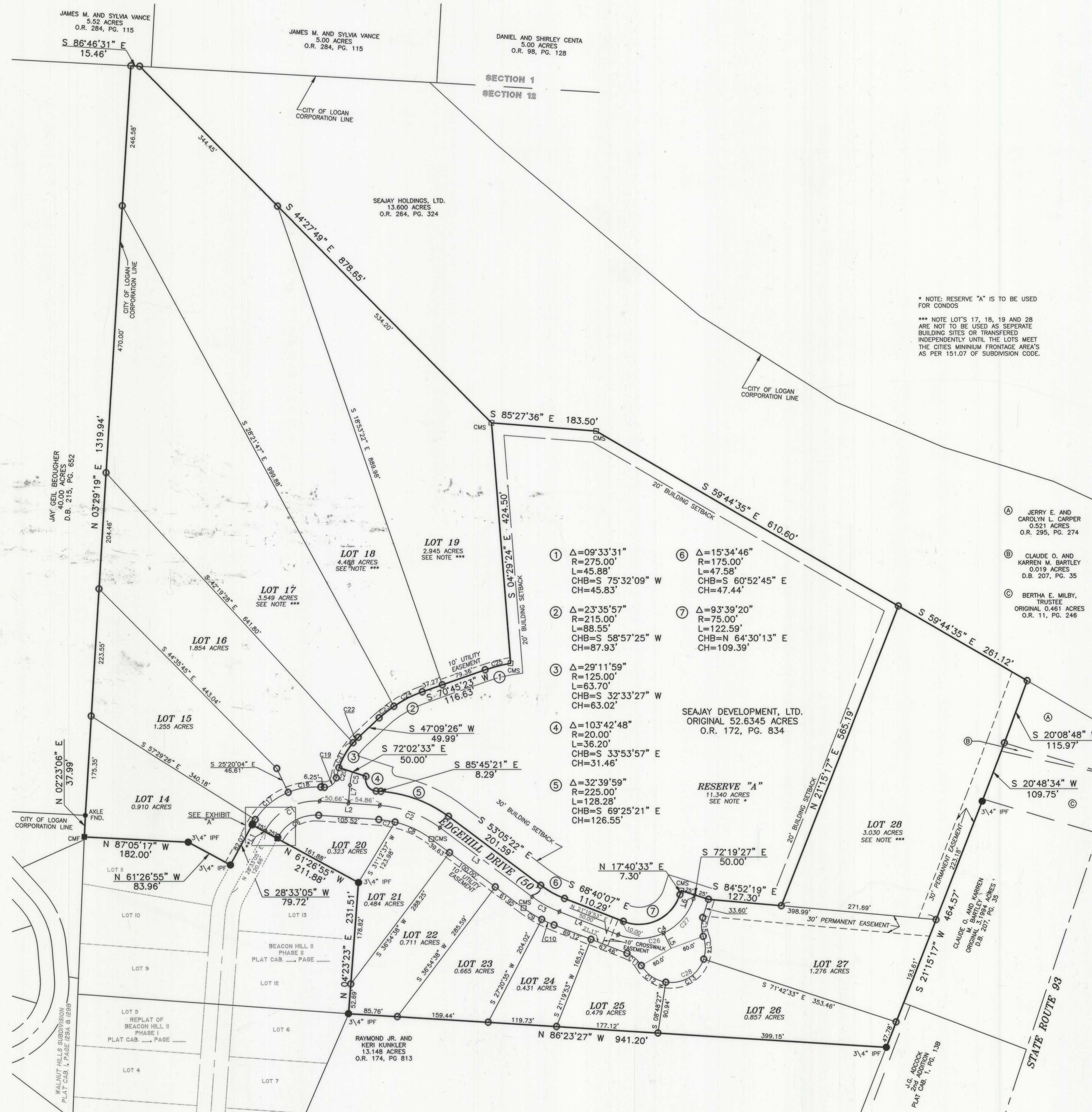


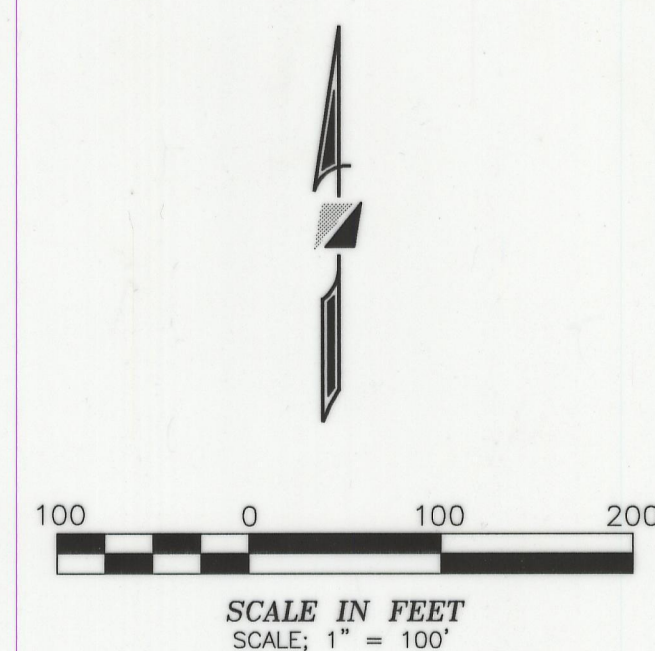
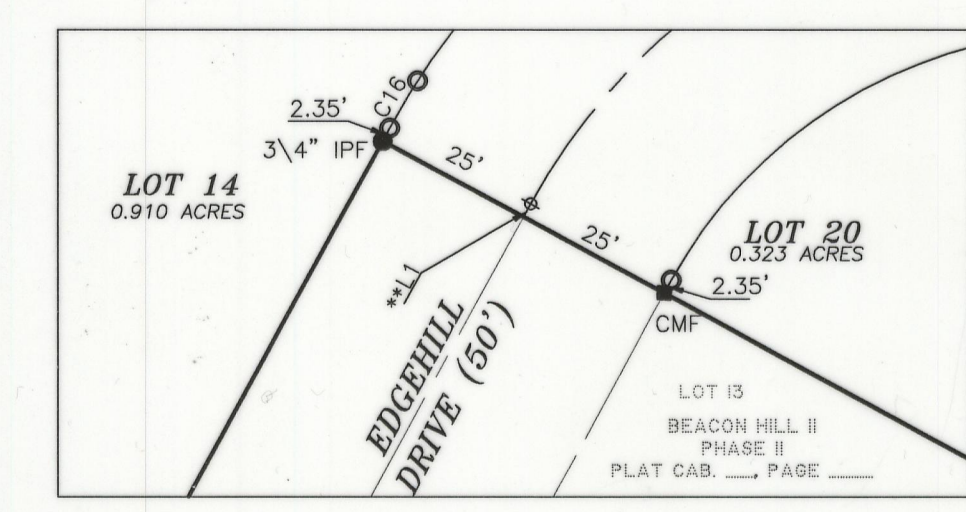
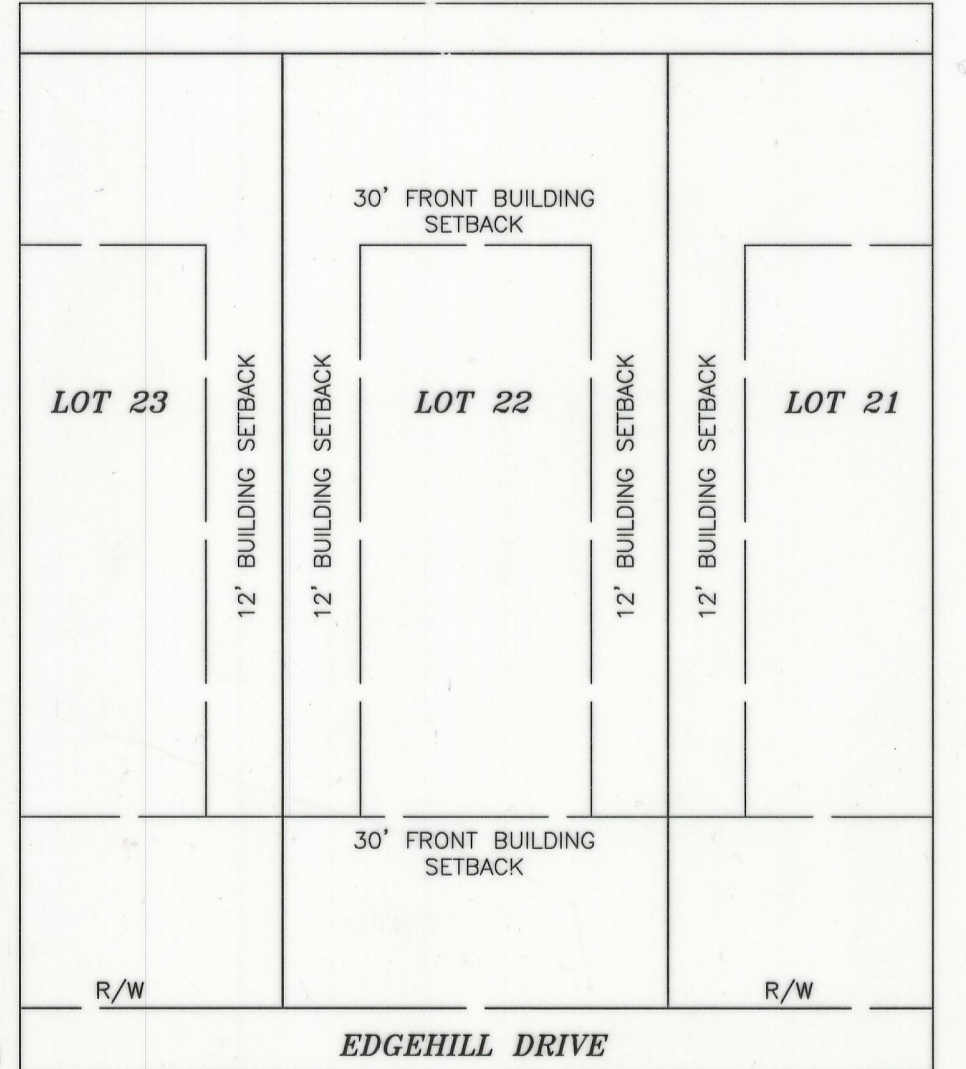
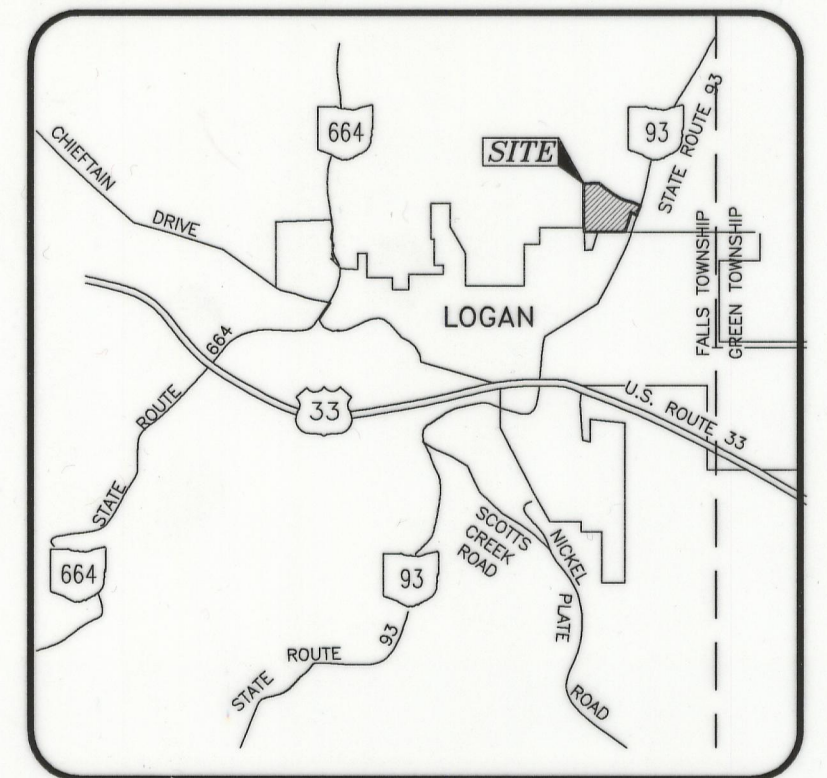
CURVE TABLE					
CURVE	DELTA ANGLE	RADIUS	ARC LENGTH	CHORD BEARING	CHORD LENGTH
C1	65°41'34"	100.00'	114.66'	N 61°23'52" E	108.48'
C2	32°39'59"	200.00'	114.03'	S 69°25'21" E	112.49'
C3	15°34'46"	200.00'	54.38'	S 60°52'45" E	54.21'
C4	93°39'20"	100.00'	163.46'	N 64°30'13" E	145.86'
C5	13°42'48"	100.00'	23.93'	N 11°06'03" E	23.88'
C6	65°41'34"	75.00'	85.99'	N 61°23'52" E	81.36'
C7	09°30'35"	175.00'	29.05'	S 81°00'05" E	29.01'
C8	23°09'24"	175.00'	70.73'	S 64°40'04" E	70.25'
C9	09°34'04"	225.00'	37.57'	S 57°52'23" E	37.53'
C10	06°00'42"	225.00'	23.61'	S 65°39'46" E	23.60'
C11	38°31'37"	50.00'	33.62'	S 49°24'19" E	32.99'
C12	51°03'03"	60.00'	53.46'	S 55°40'02" E	51.71'
C13	80°31'00"	60.00'	84.32'	N 58°32'57" E	77.55'
C14	39°08'31"	60.00'	40.99'	N 01°16'49" W	40.20'
C15	38°31'37"	50.00'	33.62'	N 01°35'15" W	32.99'
C16	03°57'29"	125.00'	8.64'	S 30°31'49" W	8.63'
C17	35°03'51"	125.00'	76.50'	S 50°02'29" W	75.31'
C18	26°40'14"	125.00'	58.19'	S 80°54'32" W	57.66'
C19	84°50'27"	20.00'	29.62'	S 51°49'25" W	26.98'
C20	08°33'16"	125.00'	18.66'	S 13°40'49" W	18.65'
C21	31°45'13"	125.00'	69.28'	S 25°16'48" W	68.39'
C22	06°00'02"	125.00'	13.09'	S 44°09'25" W	13.09'
C23	08°45'05"	215.00'	32.84'	S 51°31'59" W	32.81'
C24	14°50'51"	215.00'	55.72'	S 63°19'57" W	55.56'
C25	09°33'31"	275.00'	45.88'	S 75°32'09" W	45.83'
C26	46°49'40"	100.00'	81.73'	N 87°55'03" E	79.47'
C27	46°49'40"	100.00'	81.73'	N 41°05'23" E	79.47'
C28	170°42'33"	60.00'	178.77'	S 64°30'13" W	119.61'

LINE TABLE		
LINE	BEARING	DISTANCE
L1	N 28°33'05" E	2.35'
L2	S 85°45'21" E	105.52'
L3	S 53°05'22" E	201.59'
L4	S 68°40'07" E	110.29'
L5	S 25°29'47" E	30.00'
L6	N 17°40'33" E	7.30'
L7	N 04°14'39" E	31.96'

** DISTANCE FOR L1 IS FROM THE PHASE LINE TO THE PC OF THE CURVE



* NOTE: RESERVE "A" IS TO BE USED FOR CONDOS
 *** NOTE LOTS 17, 18, 19 AND 28 ARE NOT TO BE USED AS SEPARATE BUILDING SITES OR TRANSFERRED INDEPENDENTLY UNTIL THE LOTS MEET THE CITY'S MINIMUM FRONTAGE AREA'S AS PER 151.07 OF THE SUBDIVISION CODE.



- LEGEND:**
- IPF IRON PIN FOUND
 - IPS 3/4" IRON PIN SET
 - ⊗ MAG NAIL SET
 - ⊕ CMS 3/4" IRON PIN SET IN CONCRETE
 - CMF 3/4" IRON PIN FOUND IN CONCRETE

ACREAGE: TOTAL AREA = 35.805 ACRES
 LOT AREA = 23.259 ACRES
 RESERVE "A" AREA = 11.340 ACRES
 R.O.W. AREA = 1.206 ACRES

PREPARED BY:
R.D.Zande & Associates
 78 W. MAIN STREET LOGAN, OHIO 43138
 (740) 380-2828 1-866-558-2828
 FAX (740) 380-3535
BEACON HILL II, PHASE III
 SHEET 2 OF 2