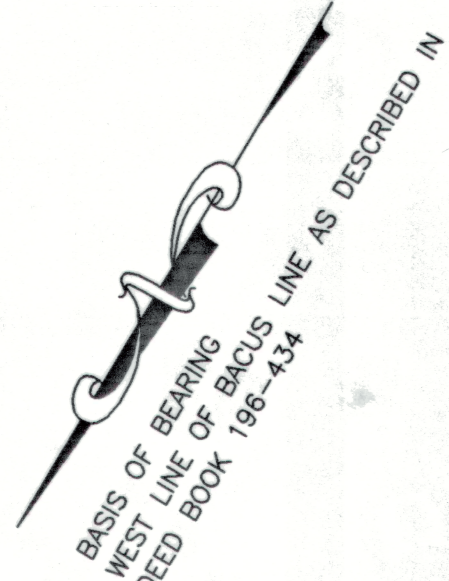
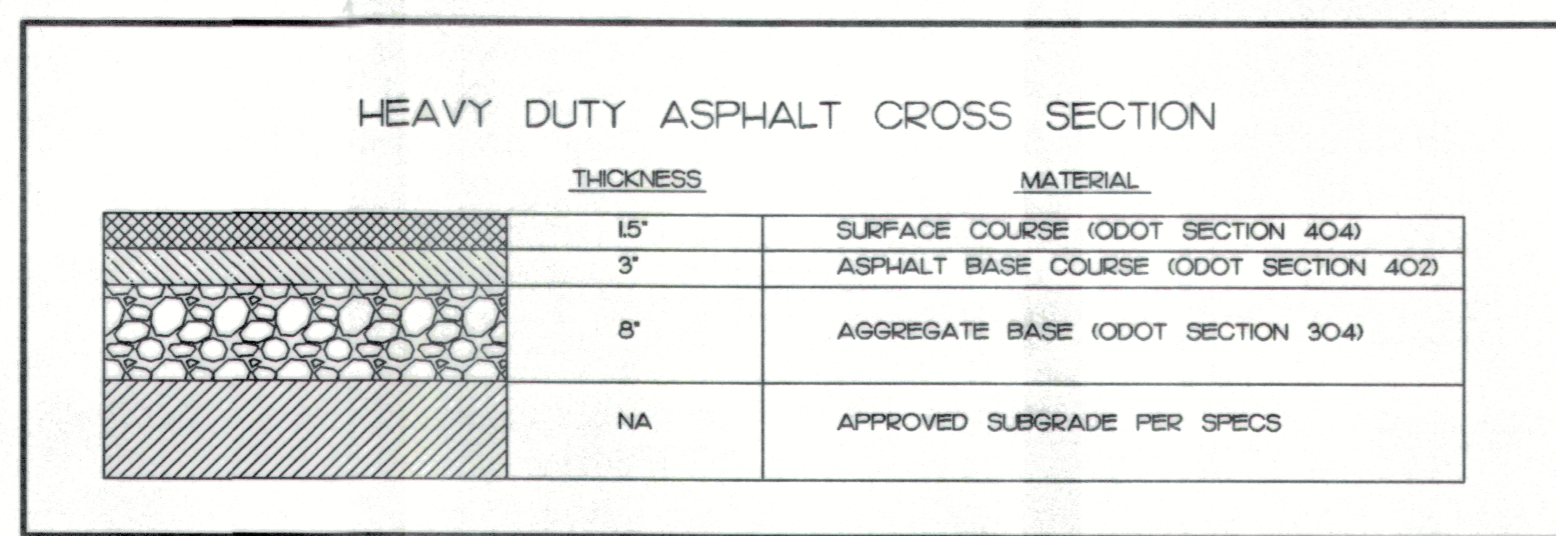


LEGEND:

- ☆ LIGHT POLE
- ⊙ PP POWER POLE
- ⊙ W WATER VALVE
- OE — OVERHEAD ELECTRIC LINE
- 5/8" x 30" LONG REBAR WITH PLASTIC ID CAP INSCRIBED "MJ BLASIO 7389"
- IPF IRON PIN FOUND
- △ BERSTEN A2BR30 BREAK-OFF MONUMENT 2 3/8" x 33 1/2" WITH 3 1/4" ALUMINIUM CAP STAMPED "MJ BLASIO 7389"



LINE TABLE

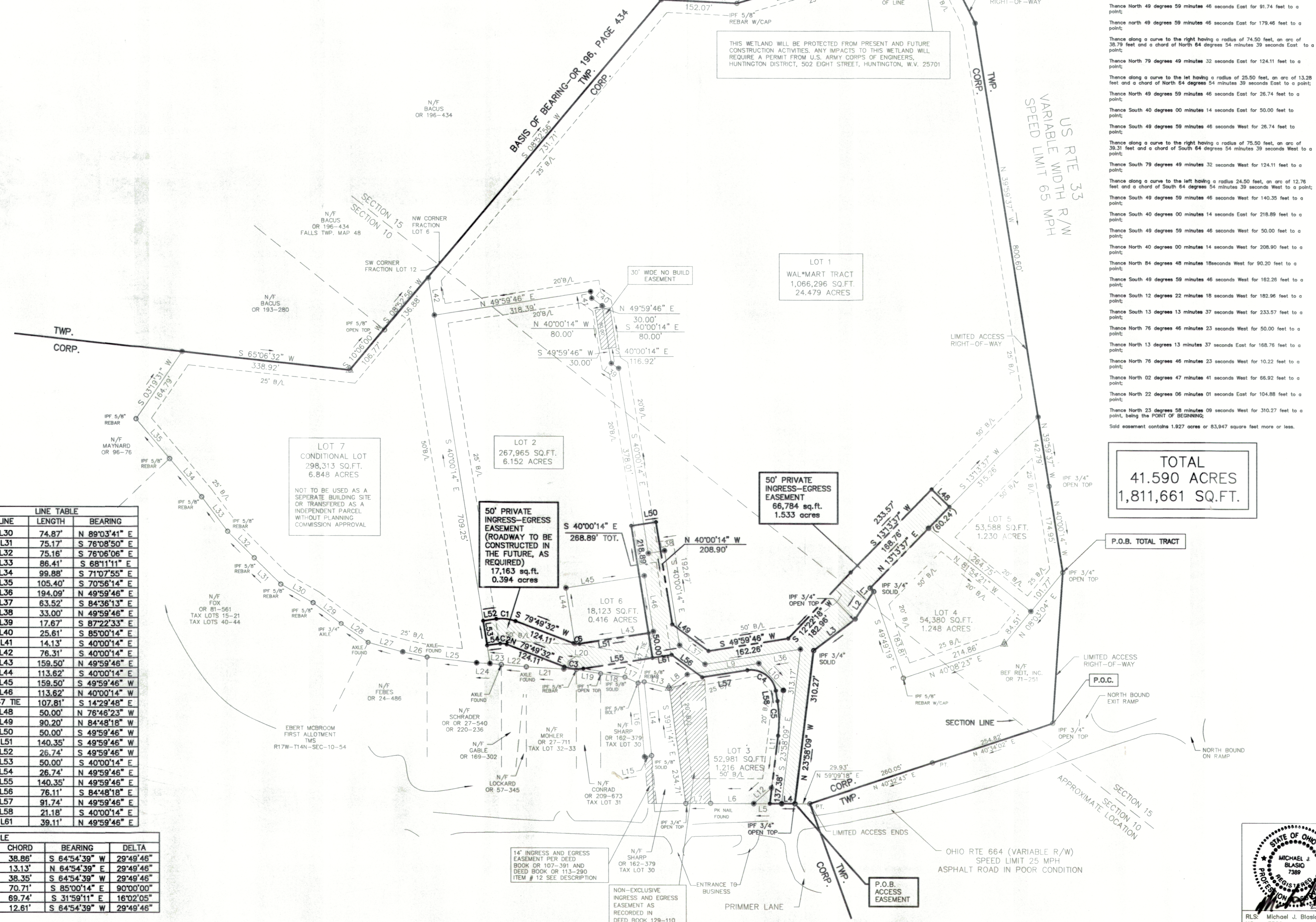
LINE	LENGTH	BEARING
L1	10.22'	N 76°46'23" W
L2	66.92'	N 02°47'41" W
L3	104.88'	N 22°06'01" E
L4	26.70'	N 59°02'21" E
L5	56.12'	N 59°02'21" E
L6	86.46'	N 59°02'21" E
L7	49.96'	N 59°03'20" E
L8	45.82'	S 22°41'04" W
L9	145.27'	S 49°59'46" W
L10	73.65'	N 73°14'23" W
L11	197.58'	N 23°58'09" W
L12	47.84'	N 17°32'06" E
L13	51.38'	N 73°01'57" E
L14	149.33'	N 36°38'22" W
L15	14.80'	N 48°59'22" E
L16	149.13'	S 35°45'00" E
L17	28.97'	N 83°27'59" E
L18	49.40'	N 107°01'10" E
L19	49.25'	N 67°53'05" E
L20	25.03'	N 62°08'29" E
L21	75.83'	N 62°08'28" E
L22	50.31'	N 64°00'02" E
L23	22.90'	N 61°46'55" E
L24	26.80'	N 61°46'55" E
L25	100.23'	N 65°28'38" E
L26	50.03'	N 70°34'38" E
L27	72.03'	N 74°25'10" E
L28	65.98'	S 86°10'55" E
L29	70.18'	S 84°23'25" E

LINE TABLE

LINE	LENGTH	BEARING
L30	74.87'	N 89°03'41" E
L31	75.17'	S 76°08'50" E
L32	75.16'	S 76°06'06" E
L33	86.41'	S 68°11'11" E
L34	99.88'	S 71°07'55" E
L35	105.40'	S 70°56'14" E
L36	194.09'	N 49°59'46" E
L37	63.52'	S 84°36'13" E
L38	33.00'	N 49°59'46" E
L39	17.67'	S 87°22'33" E
L40	25.61'	S 85°00'14" E
L41	14.13'	S 40°00'14" E
L42	76.31'	S 40°00'14" E
L43	159.50'	N 49°59'46" E
L44	113.62'	S 40°00'14" E
L45	159.50'	S 49°59'46" W
L46	113.62'	N 40°00'14" W
L47 TIE	107.81'	S 14°29'48" E
L48	50.00'	N 76°46'23" W
L49	90.20'	N 84°48'18" W
L50	50.00'	S 49°59'46" W
L51	140.35'	S 49°59'46" W
L52	26.74'	S 49°59'46" W
L53	50.00'	S 40°00'14" W
L54	26.74'	N 49°59'46" E
L55	140.35'	N 49°59'46" E
L56	76.11'	S 84°48'18" E
L57	91.74'	N 49°59'46" E
L58	21.18'	S 40°00'14" E
L61	39.11'	N 49°59'46" E

CURVE TABLE

CURVE	RADIUS	LENGTH	TANGENT	CHORD	BEARING	DELTA
C1	75.50'	39.31'	20.11'	38.86'	S 64°54'39" W	29°49'46"
C2	25.50'	13.28'	6.79'	13.13'	N 64°54'39" E	29°49'46"
C3	74.50'	38.79'	19.84'	38.35'	S 64°54'39" W	29°49'46"
C4	50.00'	78.54'	50.00'	70.71'	S 85°00'14" E	90°00'00"
C5	250.00'	69.97'	35.21'	69.74'	S 31°59'11" E	16°02'05"
C6	24.50'	12.76'	6.53'	12.81'	S 64°54'39" W	29°49'46"



ACCESS EASEMENT

Being located in Falls Township, Hocking County, State of Ohio and being part of the Southern half of Section 10 and the Northern half of Section 15 and being more fully described as follows:

Commencing at an iron pin located at the right of way intersection of the eastern right of way of US Rte 33 and the southern right of way of Ohio Rte 664:

Thence along the southern right of way Ohio Rte 664 North 40 degrees 34 minutes 02 seconds East for 254.82 feet to a point;

Thence North 40 degrees 32 minutes 43 seconds East for 260.05 feet to a point;

Thence North 59 degrees 09 minutes 18 seconds East for 29.93 feet to an iron pin, being the POINT OF BEGINNING;

Thence North 59 degrees 02 minutes 21 seconds East for 51.04 feet to a point;

Thence along a common line with Outlet #1, South 23 degrees 58 minutes 09 seconds East for 137.38 feet to a point;

Thence along a curve to the left having a radius of 250.00 feet, an arc of 69.87 feet and a chord of South 31 degrees 59 minutes 11 seconds East to a point;

Thence South 40 degrees 00 minutes 14 seconds East for 21.18 feet to a point;

Thence along a curve to the left having a radius of 50.00 feet, an arc of 13.28 feet and a chord of South 85 degrees 00 minutes 14 seconds East to a point;

Thence North 49 degrees 59 minutes 46 seconds East for 91.74 feet to a point;

Thence North 49 degrees 59 minutes 46 seconds East for 179.46 feet to a point;

Thence along a curve to the right having a radius of 74.50 feet, an arc of 39.79 feet and a chord of North 64 degrees 54 minutes 39 seconds East to a point;

Thence North 79 degrees 49 minutes 32 seconds East for 124.11 feet to a point;

Thence along a curve to the left having a radius of 25.50 feet, an arc of 13.28 feet and a chord of North 64 degrees 54 minutes 39 seconds East to a point;

Thence North 49 degrees 59 minutes 46 seconds East for 26.74 feet to a point;

Thence South 40 degrees 00 minutes 14 seconds East for 50.00 feet to a point;

Thence South 49 degrees 59 minutes 46 seconds West for 26.74 feet to a point;

Thence along a curve to the right having a radius of 75.50 feet, an arc of 39.31 feet and a chord of South 64 degrees 54 minutes 39 seconds West to a point;

Thence South 79 degrees 49 minutes 32 seconds West for 124.11 feet to a point;

Thence along a curve to the left having a radius 34.50 feet, an arc of 12.76 feet and a chord of South 64 degrees 54 minutes 39 seconds West to a point;

Thence South 49 degrees 59 minutes 46 seconds East for 140.35 feet to a point;

Thence South 40 degrees 00 minutes 14 seconds East for 218.89 feet to a point;

Thence North 49 degrees 59 minutes 46 seconds West for 50.00 feet to a point;

Thence North 40 degrees 00 minutes 14 seconds West for 208.90 feet to a point;

Thence North 84 degrees 48 minutes 18 seconds West for 90.20 feet to a point;

Thence South 49 degrees 59 minutes 46 seconds West for 162.28 feet to a point;

Thence South 12 degrees 22 minutes 18 seconds West for 182.96 feet to a point;

Thence South 13 degrees 13 minutes 37 seconds West for 233.57 feet to a point;

Thence North 76 degrees 46 minutes 23 seconds East for 50.00 feet to a point;

Thence North 13 degrees 13 minutes 37 seconds East for 168.76 feet to a point;

Thence North 76 degrees 46 minutes 23 seconds West for 10.22 feet to a point;

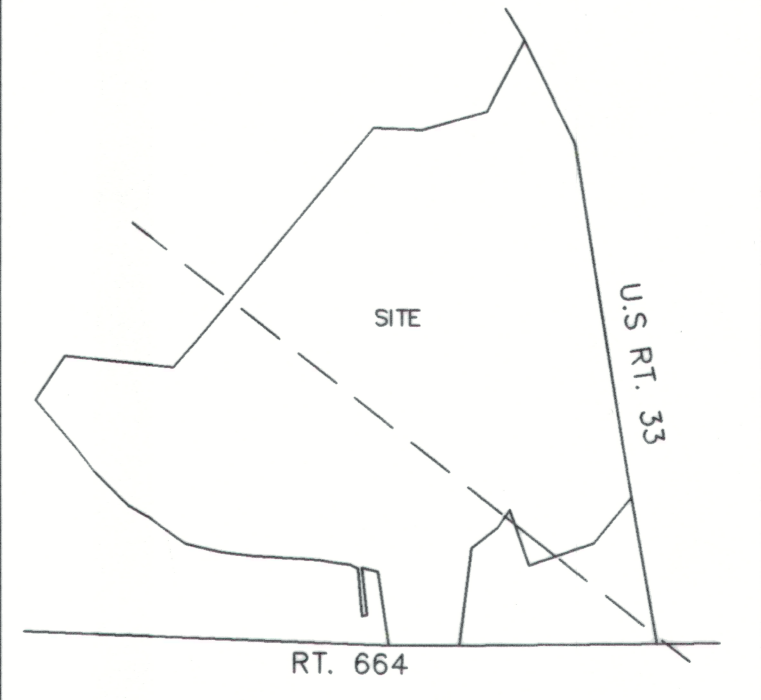
Thence North 02 degrees 47 minutes 41 seconds West for 66.92 feet to a point;

Thence North 22 degrees 06 minutes 01 seconds East for 104.88 feet to a point;

Thence North 23 degrees 58 minutes 09 seconds West for 310.27 feet to a point, being the POINT OF BEGINNING.

Said easement contains 1.927 acres or 83,947 square feet more or less.

TOTAL
41.590 ACRES
1,811,661 SQ.FT.



LOCATION MAP

GENERAL NOTES:

FLOOD INFORMATION:

FLOOD ZONE "X"
FIRM MAP 390272-0100C
EFF. 11-16-90
AREAS DETERMINED TO BE OUTSIDE 500 YR FLOOD PLAIN

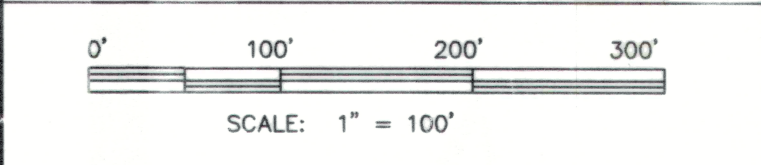
DATE OF LAST REVISION: 2-15-2001

STATE OF OHIO
HOCKING COUNTY
FALLS TOWNSHIP
CITY OF LOGAN

INGRESS -EGRESS EASEMENT
BRIGHT-OHIO, L.P.

Freeland
SURVEYORS • ENGINEERS

FREELAND & ASSOCIATES, INC.
323 WEST STONE AVE.
GREENVILLE, S.C. 29609
TEL. (864) 271-4924 FAX: (864) 233-0315
EMAIL: jfreeland@worldnet.att.net



REF. PLAT BOOK: _____
REF. DEED BOOK: OR61-636, OR105-901, OR107-391
TAX. AC. : R17W-T14N-SEC10 - FRAC. LOT 1
DATE OF SURVEY: 3-25-00
DRAWN BY: JCC, JPR, BEC
PARTY CHIEF: JCC, MVA
CHECKED: MVA

DATE OF REVISION: 3-25-00
DRAWING: 42181-SUB3
3 OF 5

4-10-04

4-10-04