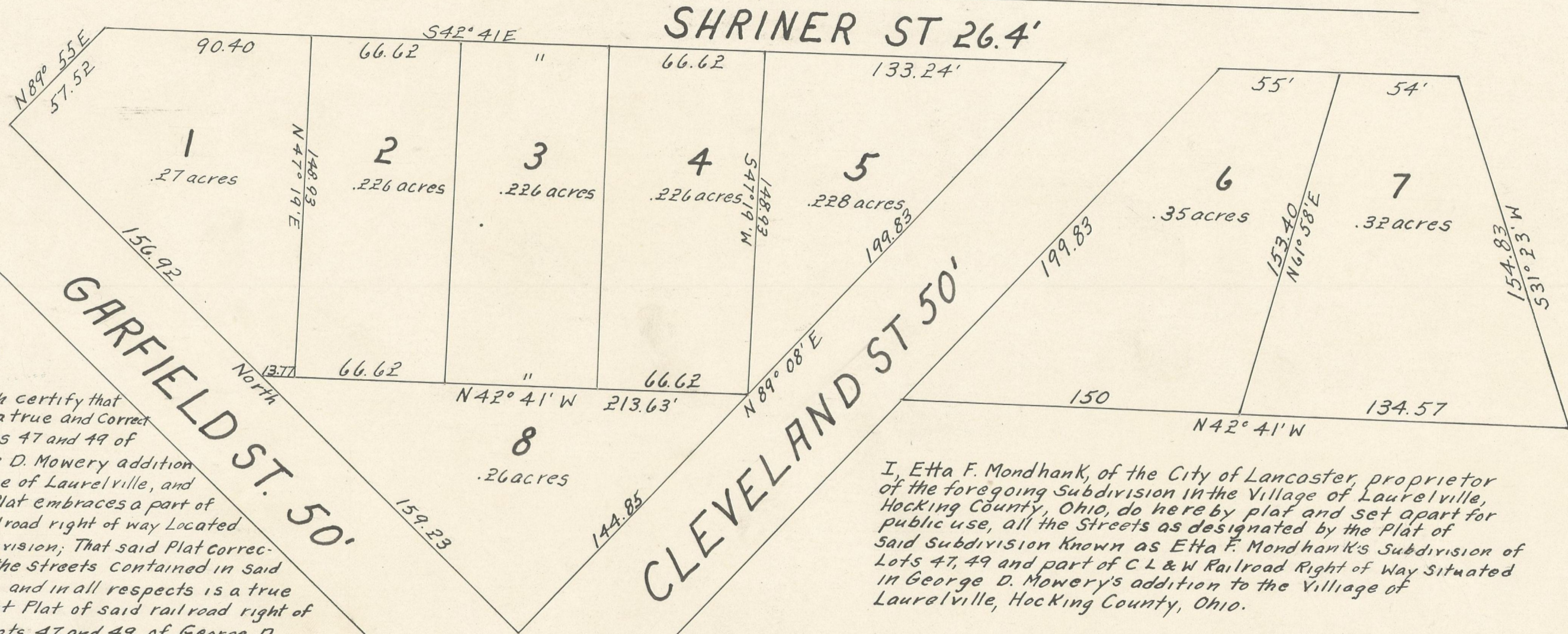


Etta F. Mondhank's Subdivision of Lots 47, 49, and Part of C L & W Railroad Right of Way situated in George D. Mowery's Addition to the Village of Laurelville, Hocking County, Ohio.



I here with certify that this Plat is a true and Correct Plat of Lots 47 and 49 of the George D. Mowery addition to the Village of Laurelville, and that said Plat embraces a part of C L & W Railroad right of way Located within Subdivision; That said Plat Correctly Shows the Streets Contained in said Subdivision and in all respects is a true and Correct Plat of said railroad right of way and Lots 47 and 49, of George D. Mowery's addition.

(signed) Owen Bradford

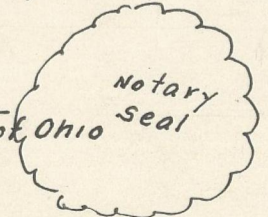


I, Etta F. Mondhank, of the City of Lancaster, proprietor of the foregoing Subdivision in the Village of Laurelville, Hocking County, Ohio, do hereby plat and set apart for public use, all the Streets as designated by the Plat of said Subdivision known as Etta F. Mondhank's Subdivision of Lots 47, 49 and part of C L & W Railroad Right of Way Situated in George D. Mowery's addition to the Village of Laurelville, Hocking County, Ohio.

signed Etta F. Mondhank

Sworn to and subscribed before me this 18th day of October, 1956.

signed Hubert D. Lappen
Notary Public, State of Ohio



This plat is approved and accepted this 18th day of October, 1956, by the County Commissioners of Hocking County, Ohio.

signed H. M. Bierley
Joe M. Brown
Harry L. Armstrong

Attest "s" Harry L. Smith
Clerk

4549 Fee \$5.00

Received Oct. 18, 1956 at 11:00 A.M.
Recorded Oct. 25, 1956 - Esther Carpenter
Hocking Co. Recorder

Cherub certify the above to be a true copy of the original