

SD

SANDS DECKER  
ENGINEERS

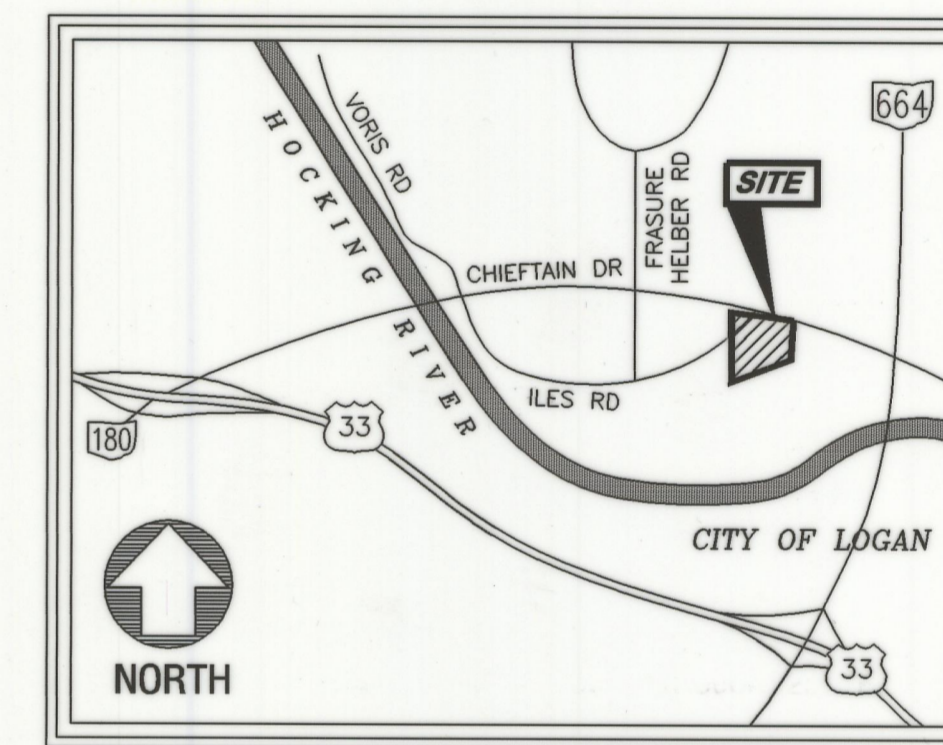
4588 KENNY RD  
COLUMBUS, OH 43220  
614-538-8560  
FAX: 614-538-8561

TOLL FREE  
1-877-809-0008

397 WEST FRONT ST  
LOGAN, OH 43138  
740-385-2140  
FAX: 740-385-0491

# CITY OF LOGAN, OHIO LOGAN - HOCKING INDUSTRIAL PARK SUBDIVISION PHASE ONE

Situated in the State of Ohio,  
County of Hocking, City of Logan,  
Falls Township, Section 4, T-14-N,  
R-17-W, being part of the SW 1/4.



LOCATION MAP  
NOT TO SCALE

### APPROVALS

Mathematically approved this 16<sup>th</sup> day of June, 2005.

*Jack Nelson*  
Hocking County Engineer's Office

### REGIONAL PLANNING OFFICE APPROVAL

This Plat approved by the Hocking County Regional Planning Office this 16 day of June, 2005.

*D. E. Wyle* 6-16-05  
Regional Planning Commission Date

### CERTIFICATE OF PLANNING COMMISSION

We, the Planning Commission of the City of Logan, Ohio, hereby certify that at a meeting of the Commission held on the 6<sup>th</sup> day of June, 2005, a resolution was duly passed approving this plat.

PLANNING COMMISSION, CITY OF LOGAN, OHIO

*Michael J. Wall*  
Chairman, Logan City Planning Commission

### COUNTY HEALTH DEPARTMENT APPROVAL

This Plat approved by the Board of Health, Hocking County, Ohio this 16 day of June, 2005.

BOARD OF HEALTH, HOCKING COUNTY, OHIO

*Patricia McGarry*

### AUDITOR'S CERTIFICATE

Transferred on tax duplicate this 16<sup>th</sup> day of June, 2005.

*Kenneth R. Wilson*  
HOCKING COUNTY AUDITOR

### RECORDER'S CERTIFICATE

Filed for record this 16 day of June, 2005 at 10:05 A.M.  
Recorded this 16 day of June, 2005  
in Plat Cabinet 2 Page 129.

*Sandra K. Leach-Hunt*  
HOCKING COUNTY RECORDER

2 WORKING DAYS  
BEFORE YOU DIG  
CALL TOLL FREE 800-362-2764  
OHIO UTILITIES PROTECTION SERVICE



NORTH

GRAPHIC SCALE



1" = 100'

## LOGAN-HOCKING INDUSTRIAL PARK SUBDIVISION PLAT PHASE ONE

06-08-05  
06-13-05

SUBDIVISION PLAT

1 OF 1

SD PROJECT NO. 1562

### BOUNDARY DESCRIPTION

Situated in the State of Ohio, County of Hocking, City of Logan, Falls Township, SW 1/4 of Section 4, T14N, R17W and being a part of a parcel described in Official Record 174, Page 19 being more particularly described as follows:

BEGINNING for reference at a point at the southwest corner of Section 4;

Thence along the south line of Section 4 South 89°44'03" East a distance of 1,500.98 feet to a point;

Thence leaving the south line of Section 4 North 00°00'00" East and passing a 5/8" rebar found at 572.82 feet and at 605.71 feet, a total distance of 633.02 feet to a point at the northeast corner of lands described in OR 174, Page 19;

Thence following the northeast line of lands described in OR 174, Page 19 North 42°59'14" West a distance of 9.98 feet to magnail set at the TRUE POINT OF BEGINNING;

Thence South 46°50'20" West a distance of 32.60 feet to a magnail set on the north line of a 1.9 acre parcel deeded to the City of Logan in Official Record 257, Page 750 and now known as Industrial Park Drive;

Thence along the north end of Industrial Park Drive North 43°09'50" West a distance of 30.00 feet to a 5/8" rebar found at the north corner of Industrial Park Drive as described in Official Record 257, Page 750;

Thence along the north line of Industrial Park Drive South 46°50'20" West a distance of 477.30 feet to a 5/8" rebar found;

Thence continuing along the north line of Industrial Park Drive with a curve to the right having a radius of 256.24 feet, a delta of 47°28'23", a chord bearing of South 70°13'51" West, and a chord length of 206.29 feet to an iron pin set;

Thence leaving the north line of Industrial Park Drive North 00°00'00" East a distance of 554.65 feet to an iron pin set on the south line of Iles Road;

Thence along the south line of Iles Road with a curve to the left having a radius of 393.78 feet, a delta of 48°27'31", a chord bearing of North 62°17'52" East, a chord length of 323.21 feet, to a 5/8" rebar found, passing an iron pin set at a chord length of 299.77 feet and a chord bearing of North 64°09'16" East at the east right-of-way line of Chieftain Drive;

Thence North 38°04'36" East a distance of 9.74 feet to the north corner of lands described in OR 174, Page 19;

Thence along the northeast line of said lands in OR 174, Page 19 South 42°59'14" East a distance of 431.82 feet to the TRUE POINT OF BEGINNING.

Containing 5.470 acres total (0.328 acres in Chieftain Drive right of way, 0.037 acres in easement area), and subject to all easements and rights-of-way of record. This survey was prepared from an actual field survey on February 7, 2005 and March 25, 2005, records on file at the Hocking County Recorder's Office, the Hocking County Engineer's Map department, records of the Ohio Department of Transportation and a Plat of Survey by George F. Seymour dated July 01, 2002.

All iron pins set are 1" x 3/8" Berntsen #GIBR30 break-off monument with a 3-1/4" aluminum cap stamped "RCT 5892".

Basis of Bearings: The bearings shown herein are based on the south line of Section 4 bearing South 89°44'03" East as shown in a survey recorded in Official Record 174, Page 19 of the Hocking County Records

### NOTES:

1. ZONED M-1
2. BUILDING SETBACKS  
FRONT = 75'  
SIDE = 50'  
REAR = 50'
3. FEMA FLOOD ZONE INFORMATION:  
ZONE X  
COMMUNITY PANEL NO. 390272 0100 C  
EFFECTIVE NOVEMBER 16, 1990
4. RESTRICTIONS:  
SEE OFFICIAL RECORD 0174, PAGE 019 AND  
OFFICIAL RECORD 0322, PAGE 136.

### LEGEND

- 5/8" REBAR FOUND
- 1" X 3/8" BERNTSEN #GIBR30 BREAK-OFF MONUMENT WITH A 3-1/4" ALUMINUM CAP STAMPED "RCT 5892" SET
- ◆ MAGNAIL SET
- UTILITY EASEMENT

SURVEYORS STATEMENT: I hereby certify that an actual survey was made by me of the premises shown hereon on February 7, 2005 and March 25, 2005; that the plat is a correct representation of the premises as determined by said survey. I further certify that there are no encroachments either way across any boundary line of the premises except as shown thereon. All permanent markers called for have been or will be set upon completion of site work.



*Russell C. Taylor*  
Registered Surveyor No. 5892 Date 06/14/05

These drawings are instruments of professional service by Sands Decker Ltd. for the designated project. Sands Decker Ltd. assumes no liability for unauthorized use of these drawings, specifications, and documents.

CHARLES JR., & JOSEPHINE MATHIAS  
DV 199-757

The undersigned, Hocking County Community Improvement Corporation, hereby certify that the attached Plat correctly represents the Logan-Hocking Industrial Park Development and do hereby accept this plat of same and dedicate to public use all roads and utility easements shown hereon not heretofore dedicated.

IN WITNESS WHEREOF, Hocking County Community Improvement Corporation hereunto caused this acknowledgment to be executed this 16 day of June, 2005.

Signed and acknowledged in the presence of:  
*Bill Rinchart*  
Owner  
*Bill Rinchart, EXECUTIVE DIRECTOR*  
Printed Name  
Hocking County Community Improvement Corp.  
Owner  
Witness

Printed Name  
Before me, *Carol L. Vermillion* Notary Public, in and for said County and State, personally came *Bill Rinchart* who acknowledged the signing of the foregoing instrument to be his voluntary act and deed.

IN WITNESS WHEREOF, I have hereunto set my hand and affixed my seal this 16<sup>th</sup> day of June, 2005.

*Carol L. Vermillion* *Hocking*  
Notary Public County  
My Commission Expires: April 1, 2006