

RECEIVED / October 1971 1:50 P.M. 2.00  
RECORDED / October 1971  
BOOK F PAGE 14  
NOTE: This Plot supercedes the Plot recorded in Plot Book 'C', Page 19

Edgar Carpenter  
COUNTY RECORDER

# CENTERLINE SURVEY PLAT

U.S. ROUTE 33 SECTION 14.68  
HOCKING COUNTY, OHIO  
GREEN TWP. T.13N., R.16W., SEC'S. 13, 14 & 20  
OHIO COMPANY SECOND PURCHASE

FED. RD. DIVISION	STATE	PROJECT
2	OHIO	

260  
277  
1/13

HOCKING COUNTY  
HOC-33-14.07  
LIMITED ACCESS  
R/W ACQUIRED AS HOC-33-14.07  
SHEET 1 OF 2

REF. NO.	BEARING	STATION
U.S.R-33		
1		POT. Sta 006+04.25
1 to 5	5.55°23'06"E.	
2		POT. Sta 024+50.00
3		T.S. Sta 044+39.22
4		T.C. Sta 045+09.22
5		P.I. Sta 054+95.71
5 to 10	3.26°33'56"E.	
6		C.S. Sta 063+60.52
7		T.C. Sta 065+10.52
C.R-25		
19		P.C. Sta 083+51.02
19 to 20	N 21°18'45"W.	
20		P.I. Sta 085+13.03
20 to 23	N 24°33'06"W.	
21		P.T. Sta 096+74.94
22		P.C. Sta 090+08.07
23		P.I. Sta 093+35.72
23 to 2	N 24°36'54"E.	
24		P.T. Sta 096+22.65
25		POT. Sta 096+70.00
2		POT. Sta 100+00.00
S.R-595		
2 to 30	N 24°36'54"E.	
26		POT. Sta 103+50.00
27		T.S. Sta 104+11.65
28		P.O.S. Sta 105+99.47
29		T.C. Sta 106+61.65
30		P.I. Sta 108+21.77
30 to 32	N 57°46'54"E.	
31		C.S. Sta 109+64.43
32		T.C. Sta 112+14.43
RAMP 'A'		
33		P.C. Sta 014+50.00
33 to 34	S 56°43'01"E.	
34		P.I. Sta 018+45.66
34 to 26	S 01°22'25"E.	
35		P.T. Sta 022+60.55
26		POT. Sta 024+35.50

REF. NO.	BEARING	STATION
RAMP 'B'		
26		POT. Sta 023+40.20
26 to 37	5.55°23'06"E.	
36		P.C. Sta 024+10.50
37		P.I. Sta 025+20.20
37 to 40	3.27°41'22"E.	
38		P.T. Sta 026+41.30
39		P.C. Sta 028+23.29
40		P.I. Sta 029+86.46
40 to 42	5.47°04'50"E.	
41		P.C. Sta 031+46.51
42		P.I. Sta 034+23.74
42 to 43	5.55°23'06"E.	
43		P.T. Sta 037+00.00

REF. NO.	BEARING	STATION
RAMP 'C'		
44		P.C. Sta 011+50.00
44 to 45	5.55°23'06"E.	
45		P.I. Sta 014+27.23
45 to 47	5.47°04'50"E.	
46		P.C.C. Sta 017+03.49
47		P.I. Sta 018+30.36
47 to 50	5.31°00'19"E.	
48		P.T. Sta 019+71.45
49		P.C. Sta 022+65.15
50		P.I. Sta 023+60.29
50 to 25	5.55°23'06"E.	
51		P.T. Sta 024+60.31
25		POT. Sta 025+53.17

BEGIN PROJECT  
HOC-33-14.68  
Sta 006+04.25

20  
C.R-25  
CURVE DATA  
P.I. Sta 05+13.03  
Δ = 3°14'21"  
D = 1°30'00"  
R = 3019.72'  
L = 1771.30'  
T = 1056.43'  
E = 124.32'  
B<sub>s</sub> = 1°07'30"  
L<sub>s</sub> = 150.00'  
LT = 100.00'  
ST = 50.00'

REF. NO.	BEARING	STATION
RAMP 'D'		
25		POT. Sta 024+63.40
25 to 53	5.76°39'02"E.	
52		P.C. Sta 029+29.16
53		P.I. Sta 031+73.53
53 to 54	5.56°43'01"E.	
54		P.T. Sta 034+25.00
C.R-20		
55		P.C. Sta 10+30.03
55 to 56	3.33°35'01"E.	
56		P.I. Sta 12+63.72
56 to 59	3.69°08'06"E.	
57		P.T. Sta 14+35.54
58		P.C. Sta 14+95.47
59		P.I. Sta 16+69.25
59 to 62	N 70°51'54"E.	
60		P.T. Sta 18+28.00
61		P.C. Sta 19+41.09
62		P.I. Sta 20+05.02
62 to 20	S 01°53'06"E.	
63		P.T. Sta 20+65.75
20		POT. Sta 21+71.45

30  
S.R-595  
CURVE DATA  
P.I. Sta 108+21.77  
Δ = 33°10'00"  
D = 6°00'00"  
R = 954.93'  
L = 302.70'  
T = 410.12'  
E = 44.23'  
B<sub>s</sub> = 7°30'00"  
L<sub>s</sub> = 250.00'  
LT = 146.02'  
ST = 83.47'

34  
RAMP 'A'  
CURVE DATA  
P.I. Sta 018+45.66  
Δ = 24°33'24"  
D = 3°00'00"  
R = 1909.06'  
L = 810.55'  
T = 415.66'  
E = 44.71'

37  
RAMP 'B'  
CURVE DATA  
P.I. Sta 025+20.20  
Δ = 27°41'44"  
D = 12°00'00"  
R = 477.47'  
L = 230.00'  
T = 117.70'  
E = 14.23'

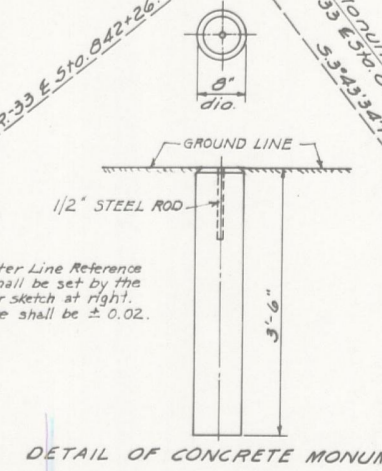
40  
RAMP 'B'  
CURVE DATA  
P.I. Sta 029+86.46  
Δ = 19°23'36"  
D = 6°00'00"  
R = 3819.72'  
L = 3823.22'  
T = 163.17'  
E = 13.04'

42  
RAMP 'B'  
CURVE DATA  
P.I. Sta 034+23.74  
Δ = 8°18'08"  
D = 1°30'00"  
R = 3819.72'  
L = 553.49'  
T = 277.23'  
E = 10.05'

CONCRETE CENTERLINE REFERENCE MONUMENTS TO BE PLACED AT THE FOLLOWING LOCATIONS DURING CONSTRUCTION

U.S.R-33	S.R-595	RAMP 'B'
Sta 006+04.25	Sta 104+11.65 23' Lt & 21' Rt	Sta 024+10.50 11' Lt & 23' Rt
Sta 010+00.00	Sta 106+61.65 21' Lt & 23' Rt	Sta 026+41.30 11' Lt & 23' Rt
Sta 015+00.00	Sta 109+64.43 21' Lt & 23' Rt	Sta 028+23.29 11' Lt & 23' Rt
Sta 020+00.00	Sta 112+14.43 21' Lt & 21' Rt	Sta 031+46.52 11' Lt & 23' Rt
Sta 025+00.00		
Sta 030+00.00		
Sta 035+00.00		
Sta 040+00.00	Sta 10+30.03 26' Lt & 15' Rt	Sta 017+03.49 23' Lt & 11' Rt
Sta 044+39.22	Sta 14+35.54 15' Lt & 17' Rt	Sta 019+71.45 23' Lt & 11' Rt
Sta 045+09.22	Sta 14+95.47 15' Lt & 17' Rt	Sta 022+65.15 23' Lt & 11' Rt
Sta 050+00.00	Sta 18+28.00 15' Lt & 15' Rt	Sta 024+60.31 23' Lt & 11' Rt
Sta 055+00.00	Sta 19+41.09 15' Lt & 15' Rt	
Sta 060+00.00		
Sta 063+60.52		
Sta 065+10.52		
RAMP 'C'		
		Sta 025+53.17 23' Lt & 11' Rt
		Sta 029+29.16 23' Lt & 11' Rt
		Sta 032+60.55 11' Lt & 23' Rt
RAMP 'D'		
		Sta 024+63.40 23' Lt & 11' Rt
		Sta 029+29.16 23' Lt & 11' Rt
		Sta 034+25.00 23' Lt & 11' Rt
C.R-20		
		Sta 10+30.03 26' Lt & 15' Rt
		Sta 14+35.54 15' Lt & 17' Rt
		Sta 14+95.47 15' Lt & 17' Rt
		Sta 18+28.00 15' Lt & 15' Rt
		Sta 19+41.09 15' Lt & 15' Rt
RAMP 'A'		
		Sta 018+45.66 23' Lt & 11' Rt
		Sta 022+60.55 11' Lt & 23' Rt

5	23	30	34	37	40	42	45	47	50	53	56	59	62
U.S.R-33	C.R-25	S.R-595	RAMP 'A'	RAMP 'B'	RAMP 'B'	RAMP 'B'	RAMP 'B'	RAMP 'C'	RAMP 'C'	RAMP 'D'	C.R-20	C.R-20	C.R-20
CURVE DATA	CURVE DATA	CURVE DATA	CURVE DATA	CURVE DATA	CURVE DATA	CURVE DATA	CURVE DATA	CURVE DATA	CURVE DATA	CURVE DATA	CURVE DATA	CURVE DATA	CURVE DATA
P.I. Sta 054+95.71	P.I. Sta 093+35.72	P.I. Sta 108+21.77	P.I. Sta 018+45.66	P.I. Sta 025+20.20	P.I. Sta 029+86.46	P.I. Sta 034+23.74	P.I. Sta 045+09.22	P.I. Sta 018+30.36	P.I. Sta 023+60.29	P.I. Sta 031+73.53	P.I. Sta 12+63.72	P.I. Sta 16+69.25	P.I. Sta 20+05.02
Δ = 28°43'10"	Δ = 49°10'00"	Δ = 33°10'00"	Δ = 24°33'24"	Δ = 27°41'44"	Δ = 19°23'36"	Δ = 8°18'08"	Δ = 8°18'08"	Δ = 16°04'39"	Δ = 24°22'41"	Δ = 15°50'01"	Δ = 35°33'05"	Δ = 40°00'00"	Δ = 27°15'00"
D = 1°30'00"	D = 6°00'00"	D = 6°00'00"	D = 3°00'00"	D = 12°00'00"	D = 6°00'00"	D = 1°30'00"	D = 1°30'00"	D = 6°00'00"	D = 12°00'00"	D = 4°00'00"	D = 10°00'00"	D = 12°00'00"	D = 22°00'00"
R = 3019.72'	R = 716.20'	R = 954.93'	R = 1909.06'	R = 477.47'	R = 3819.72'	R = 3819.72'	R = 3819.72'	R = 954.93'	R = 477.47'	R = 1432.40'	R = 572.96'	R = 477.47'	R = 260.44'
L = 1771.30'	L = 614.50'	L = 302.70'	L = 810.55'	L = 230.00'	L = 3823.22'	L = 553.49'	L = 553.49'	L = 267.96'	L = 203.16'	L = 333.33'	L = 123.86'	L = 123.86'	L = 63.13'
T = 1056.43'	T = 327.65'	T = 410.12'	T = 415.66'	T = 117.70'	T = 163.17'	T = 277.23'	T = 277.23'	T = 134.07'	T = 103.14'	T = 250.43'	T = 183.63'	T = 173.70'	T = 63.13'
E = 124.32'	E = 71.33'	E = 44.23'	E = 44.71'	E = 14.23'	E = 13.04'	E = 10.05'	E = 10.05'	E = 3.48'	E = 11.01'	E = 21.73'	E = 28.73'	E = 30.64'	E = 7.54'
B <sub>s</sub> = 1°07'30"		B <sub>s</sub> = 7°30'00"		B <sub>s</sub> = 7°30'00"		B <sub>s</sub> = 7°30'00"		B <sub>s</sub> = 7°30'00"		B <sub>s</sub> = 7°30'00"		B <sub>s</sub> = 7°30'00"	
L <sub>s</sub> = 150.00'		L <sub>s</sub> = 250.00'		L <sub>s</sub> = 250.00'		L <sub>s</sub> = 250.00'		L <sub>s</sub> = 250.00'		L <sub>s</sub> = 250.00'		L <sub>s</sub> = 250.00'	
LT = 100.00'		LT = 146.02'		LT = 146.02'		LT = 146.02'		LT = 146.02'		LT = 146.02'		LT = 146.02'	
ST = 50.00'		ST = 83.47'		ST = 83.47'		ST = 83.47'		ST = 83.47'		ST = 83.47'		ST = 83.47'	



Item 604 Center Line Reference Monuments, shall be set by the Contractor as per sketch at right. Accuracy tolerance shall be ± 0.02.

LEGEND  
• Concrete Monuments

This improvement has been declared a Limited Access Highway by action of the Director of Highways on 4/27/70 and recorded in Volume 55, Page 209 of the Directors Journal, Pursuant to Law.

I hereby certify that this Plat is a true Delineation of a survey made for the Ohio Department of Highways in 1970 by Franklin Engineering Limited, Columbus, Ohio.

Hand L. E. Miller Date May 7, 1971  
Reg Sur. No. 3532