

THIS IMPROVEMENT HAS BEEN DECLARED A LIMITED ACCESS HIGHWAY FROM STATION \_\_\_\_\_ TO STATION \_\_\_\_\_ BY ACTION OF THE DIRECTOR OF HIGHWAYS AND RECORDED IN VOLUME 47 PAGE 340 OF THE DIRECTORS JOURNAL PURSUANT TO LAW.

STATIONS AND OFFSETS WITHIN THE LIMITS OF CENTER LINE SURVEY SPIRALS ARE REFERENCED TO THE SPIRAL TANGENTS.

# CENTER LINE SURVEY PLAT

## LOGAN-LANCASTER ROAD

### U.S. ROUTE 33 SEC. HOC-33-4.21

### HOCKING COUNTY, OHIO

### FALLS TWP., R-17-W, T-14-N, SEC'S. 5, 6, 7, 8

# 28084

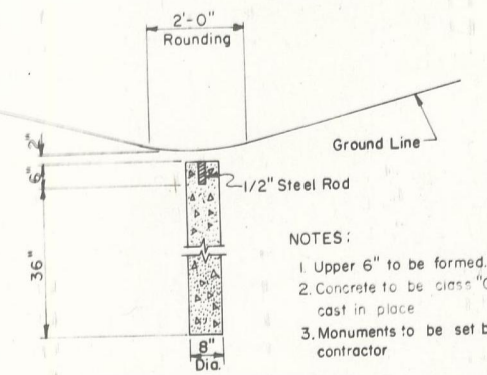
Received Dec. 2 1965  
 Recorded Dec. 2 1965  
 Book D Page 48  
*Esther Carpenter*  
 County Recorder

CENTER LINE PLAT  
 HOC - 33 - 4.21  
 LIMITED ACCESS

(27)  
306  
2  
37

U.S.R. 33  
 REFERENCE MONUMENTS

P.O.T.	= 42+00
P.T.	= 47+00
T.S.	= 53+04.30
S.C.	= 57+04.59 Bk = 57+04.30 Ah
P.O.C.	= 61+11.75
C.S.	= 65+19.21
S.T.	= 69+19.50 Bk = 69+19.21 Ah
T.S.	= 74+00.06
S.C.	= 78+00.35 Bk = 78+00.06 Ah
P.O.C.	= 80+85.59
C.S.	= 83+73.25
S.T.	= 87+73.74 Bk = 87+73.25 Ah
P.O.T.	= 91+00
P.T.	= 96+00

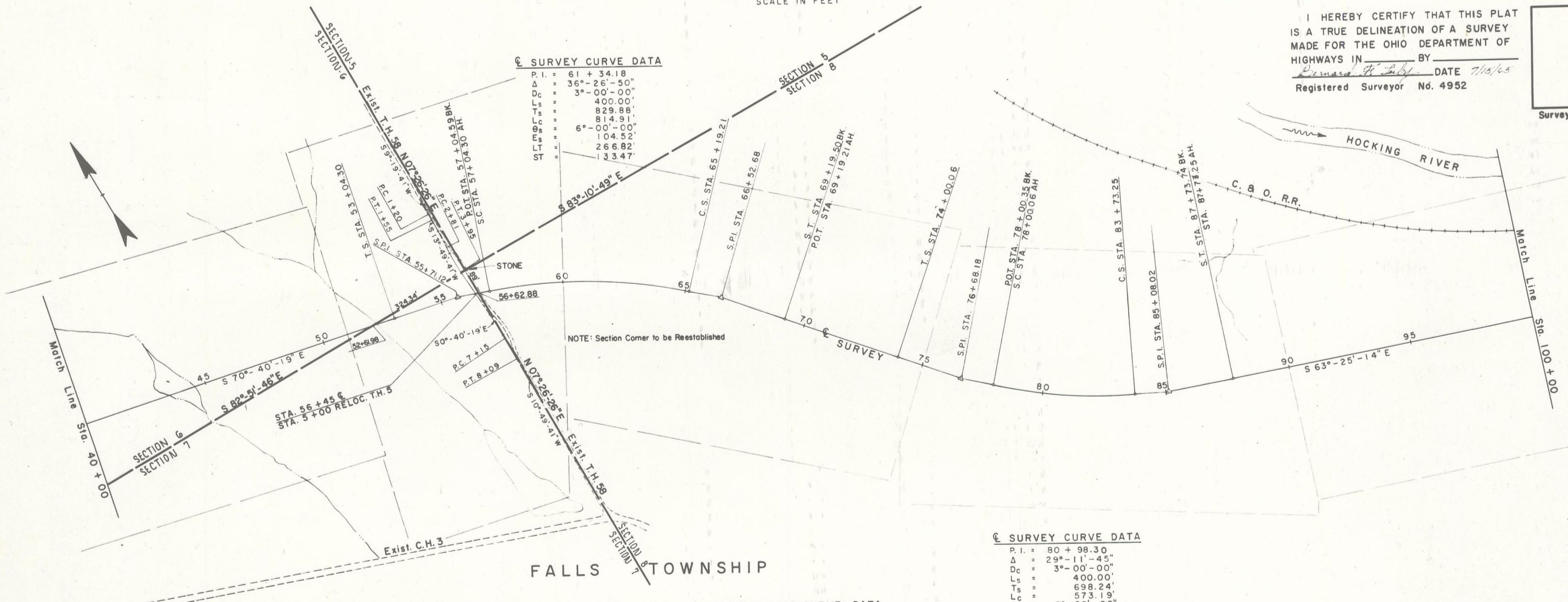
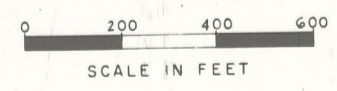


NOTES:  
 1. Upper 6" to be formed.  
 2. Concrete to be class "C" cast in place.  
 3. Monuments to be set by contractor.

REFERENCE MONUMENT SECTION

I HEREBY CERTIFY THAT THIS PLAT IS A TRUE DELINEATION OF A SURVEY MADE FOR THE OHIO DEPARTMENT OF HIGHWAYS IN \_\_\_\_\_ BY \_\_\_\_\_ DATE 7/15/65  
*Bernard W. Luby*  
 Registered Surveyor No. 4952

Surveyor's Seal



☉ SURVEY CURVE DATA

P.I.	= 61 + 34.18
Δ	= 36° - 26' - 50"
Dc	= 3° - 00' - 00"
Ls	= 400.00'
Ts	= 829.88'
Lc	= 814.91'
Os	= 6° - 00' - 00"
Es	= 104.52'
Lt	= 266.82'
St	= 133.47'

NOTE: Section Corner to be Reestablished

☉ SURVEY CURVE DATA

P.I.	= 80 + 98.30
Δ	= 29° - 11' - 45"
Dc	= 3° - 00' - 00"
Ls	= 400.00'
Ts	= 698.24'
Lc	= 573.19'
Os	= 6° - 00' - 00"
Es	= 67.32'
Lt	= 266.82'
St	= 133.47'

RELOC. T.H. 58 CURVE DATA

P.I.	= 1 + 05.85
Δ	= 3° 58' 46" Rt.
R	= 450.00'
T	= 15.63'
L	= 31.25'
E	= 0.27'

RELOC. T.H. 58 CURVE DATA

P.I.	= 3 + 39.00
Δ	= 14° 30' 00"
R	= 450.00'
T	= 57.25'
L	= 113.88'
E	= 3.63'

RELOC. T.H. 58 CURVE DATA

P.I.	= 7 + 51.33
Δ	= 11° 51' 02"
R	= 450.00'
T	= 46.70'
L	= 93.07'
E	= 2.42'