

#28082

Received Dec. 2 1965  
Recorded Dec. 2 1965  
Book D Page 47  
Esther Carpenter  
County Recorder

CENTER LINE PLAT  
HOC - 33 - 4.21  
LIMITED ACCESS

C73  
306  
4  
37

THIS IMPROVEMENT HAS BEEN DECLARED  
A LIMITED ACCESS HIGHWAY FROM STATION  
\_\_\_\_\_ TO STATION \_\_\_\_\_ BY ACTION OF  
THE DIRECTOR OF HIGHWAYS AND RECORDED  
IN VOLUME 47 PAGE 340 OF THE DIRECTORS  
JOURNAL PURSUANT TO LAW.

CO. RD. 3 CONN.  
MONUMENT ASSEMBLIES

POT = 5+35.00  
PC = 10+88.65  
PT = 13+66.43

REFERENCE MONUMENTS  
PI = 12+37.08

# CENTER LINE SURVEY PLAT

## LOGAN-LANCASTER ROAD

### U.S. ROUTE 33 SEC. HOC-33-4.21

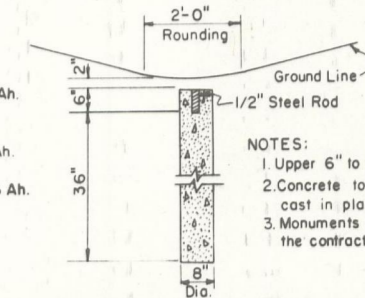
### HOCKING COUNTY, OHIO

### FALLS TWP., R-17-W, T-14-N, SEC'S. 9, 10, 15, 16

STATIONS AND OFFSETS WITHIN THE LIMITS  
OF CENTER LINE SURVEY SPIRALS ARE REFER-  
ENCED TO THE SPIRAL TANGENTS.

U.S.R. 33  
REFERENCE MONUMENTS

POC = 162+00  
CS = 166+16.25  
ST = 169+16.31 Bk = 169+16.25 Ah.  
POT = 173+00  
TS = 176+15.14  
SC = 180+15.43 Bk = 180+15.14 Ah.  
CS = 183+37.96  
ST = 187+38.25 Bk = 187+37.96 Ah.  
POT = 187+88.80  
POT = 192+00  
POT = 197+00  
POT = 202+00  
POT = 206+00  
TS = 209+89.99  
SC = 213+90.19 Bk = 213+89.99 Ah  
POC = 218+00



NOTES:  
1. Upper 6" to be formed.  
2. Concrete to be class "C",  
cast in place.  
3. Monuments to be set by  
the contractor.

REFERENCE MONUMENT  
SECTION

S.R. 664  
REFERENCE MONUMENTS

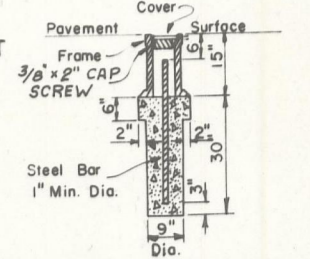
POC = 16+36  
PT = 22+95.88  
TS = 23+85.07

SOUTH BLVD  
MONUMENT ASSEMBLIES

POT = 1+20.00  
PC = 5+20.13  
PT = 6+70.01

T.H. 52A

MONUMENT ASSEMBLIES  
PC = 4+97.24 POT = 12+20  
PI = 6+85.52 P.T. = 15+00  
PT = 8+47.28



MONUMENT ASSEMBLY  
SECTION

I HEREBY CERTIFY THAT THIS PLAT  
IS A TRUE DELINEATION OF A SURVEY  
MADE FOR THE OHIO DEPARTMENT OF  
HIGHWAYS IN \_\_\_\_\_ BY \_\_\_\_\_  
Edward H. July DATE 7/15/65  
Registered Surveyor No. 4952

Surveyor's Seal

#### REFERENCE MONUMENTS

P.I. = 156 + 62.68  
Δ = 46°-59'-20"  
Dc = 2°-00'-00"  
Ls = 300.00'  
Ts = 1395.87'  
Lc = 2049.44'  
Es = 3°-00'-00"  
Eg = 260.38'  
LT = 200.03'  
ST = 100.03'

#### REFERENCE MONUMENTS

P.I. = 220 + 77.16  
Δ = 42°-16'-35"  
Dc = 2°-30'-00"  
Ls = 400.00'  
Ts = 1087.17'  
Lc = 1291.06'  
Es = 5°-00'-00"  
Eg = 168.47'  
LT = 266.77'  
ST = 133.43'

#### REFERENCE MONUMENTS

P.I. = 12 + 37.08  
Δ = 50°-00'-00"  
D = 18°-00'-00"  
R = 318.31'  
T = 148.43'  
L = 277.78'

#### REFERENCE MONUMENTS

P.I. = 181 + 81.52  
Δ = 21°-41'-05"  
Dc = 3°-00'-00"  
Ls = 400.00' LT = 266.82'  
Ts = 566.38' ST = 133.47'  
Lc = 322.82'  
Es = 6°-00'-00"  
Eg = 38.26'

#### REFERENCE MONUMENTS

P.I. = 3 + 93.45  
Δ = 43°-00'-00"  
D = 11°-00'-00"  
R = 520.87'  
T = 205.18'  
L = 390.91'  
P.I. = 10 + 83.00  
Δ = 26°-00'-00"  
D = 11°-00'-00"  
R = 520.87'  
T = 120.25'  
L = 236.36'

#### REFERENCE MONUMENTS

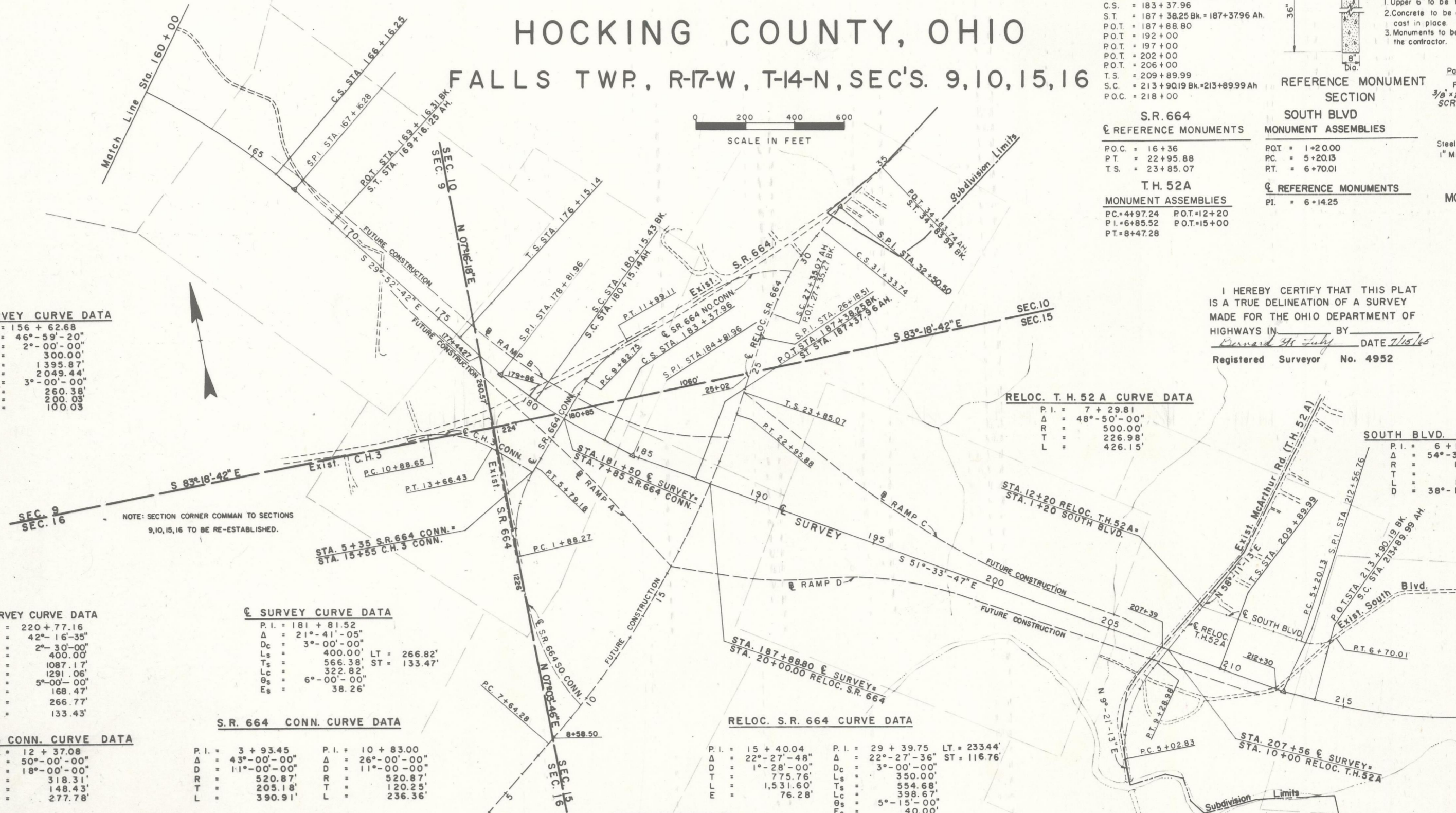
P.I. = 15 + 40.04  
Δ = 22°-27'-48"  
D = 1°-28'-00"  
T = 775.76'  
L = 1,531.60'  
E = 76.28'  
P.I. = 29 + 39.75  
Δ = 22°-27'-36"  
Dc = 3°-00'-00"  
Ls = 350.00'  
Ts = 554.68'  
Lc = 398.67'  
Es = 5°-15'-00"  
Eg = 40.00'

#### REFERENCE MONUMENTS

P.I. = 7 + 29.81  
Δ = 48°-50'-00"  
R = 500.00'  
T = 226.98'  
L = 426.15'

#### REFERENCE MONUMENTS

P.I. = 6 + 14.25  
Δ = 54°-30'-00"  
R = 150.00'  
T = 77.25'  
L = 149.88'  
D = 38°-11'-50"



FALLS

TOWNSHIP

CENTER LINE SURVEY PLAT