

**LOCATION PLAN
BREMEN - ASH CAVE ROAD
STATE ROUTE 664, SEC'S (6.75)(8.15)(9.83)(11.68)
HOCKING COUNTY OHIO
BENTON TWP, T11, R18, SEC. 1
WASHINGTON TWP, T13, R17, SEC'S 7, 6 & 5
FALLS TWP, T14, R17, SEC'S 32, 29 & 20**

File # 10272
Recorded March 26, 1959
Plat Book No. C. Page 37
Signed Esther Carpenter
Recorder County

HOC-664-(6.75)(8.15)(9.83)(11.68)

PI = 363+33.34
Δ = 2°00' Lt.
D = 1430'
T = 66.67'
L = 133.33'
R = 3819.72'

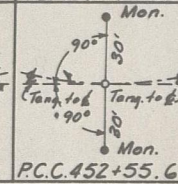
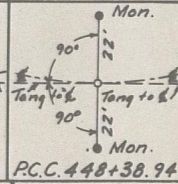
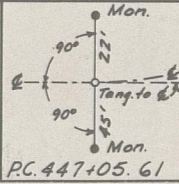
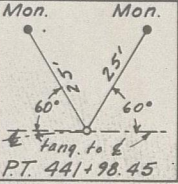
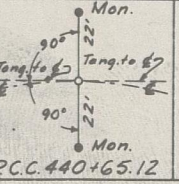
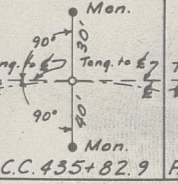
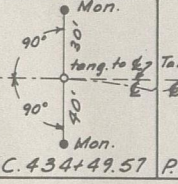
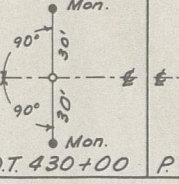
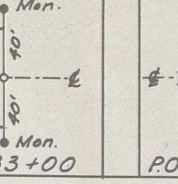
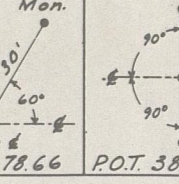
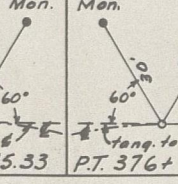
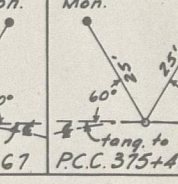
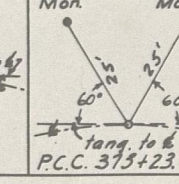
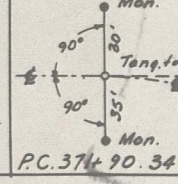
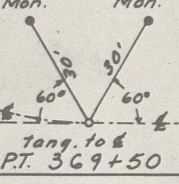
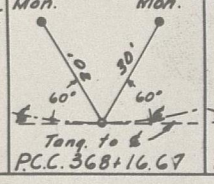
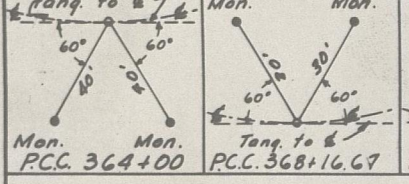
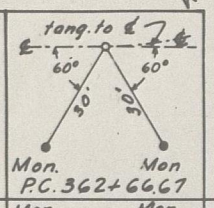
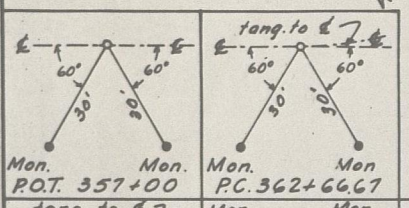
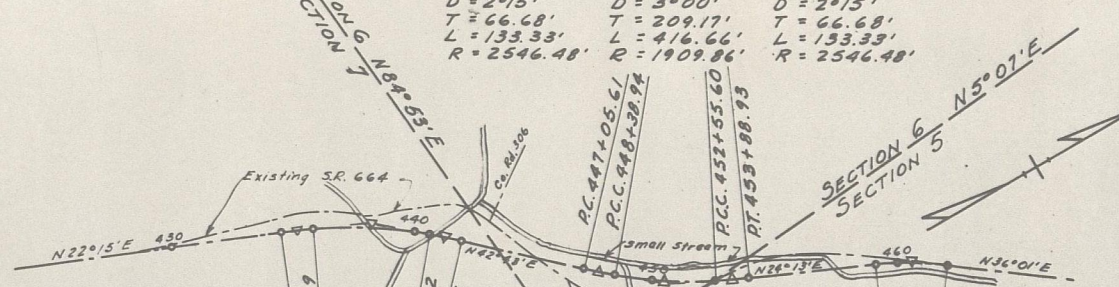
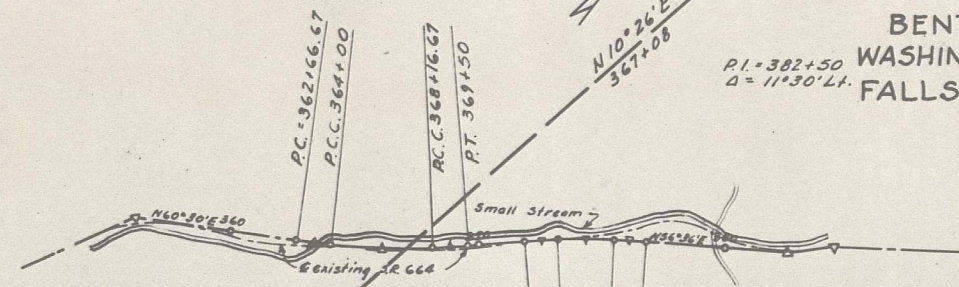
PI = 366+08.71
Δ = 8°20' Lt.
D = 2°00'
T = 208.71'
L = 416.67'
R = 2864.93'

PI = 368+83.34
Δ = 2°00' Lt.
D = 1°30'
T = 66.67'
L = 133.33'
R = 3819.72'

PI = 447+72.29
Δ = 3°00' Lt.
D = 2°15'
T = 66.68'
L = 133.33'
R = 2546.48'

PI = 450+48.11
Δ = 12°30' Lt.
D = 3°00'
T = 209.17'
L = 416.66'
R = 1909.86'

PI = 453+22.28
Δ = 3°00' Lt.
D = 2°15'
T = 66.68'
L = 133.33'
R = 2546.48'



PI = 532+67.12
Δ = 14°00' Lt.
D = 6°00'
T = 117.33'
L = 233.33'
R = 954.93'

PI = 534+98.24
Δ = 14°42' Lt.
D = 8°00'
T = 105.12'
L = 208.75'
R = 716.20'

PI = 537+09.20
Δ = 14°00' Lt.
D = 5°00'
T = 117.33'
L = 233.33'
R = 954.93'

PI = 548+43.72
Δ = 10°30' Lt.
D = 5°15'
T = 100.32'
L = 200.00'
R = 1091.35'

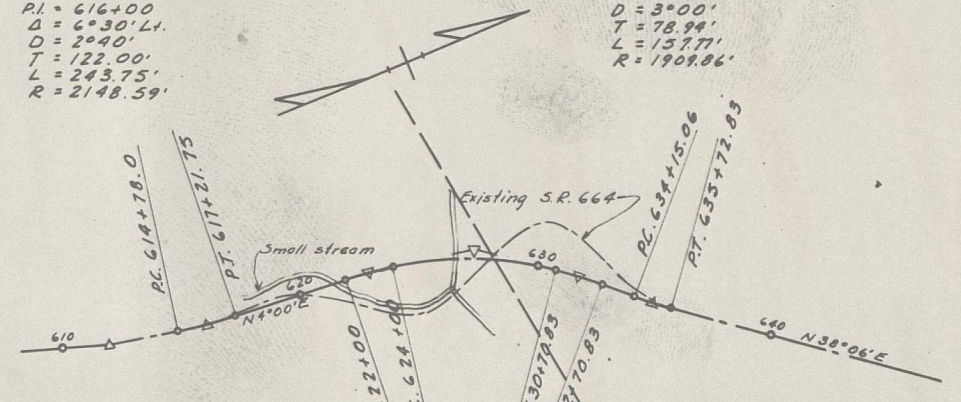
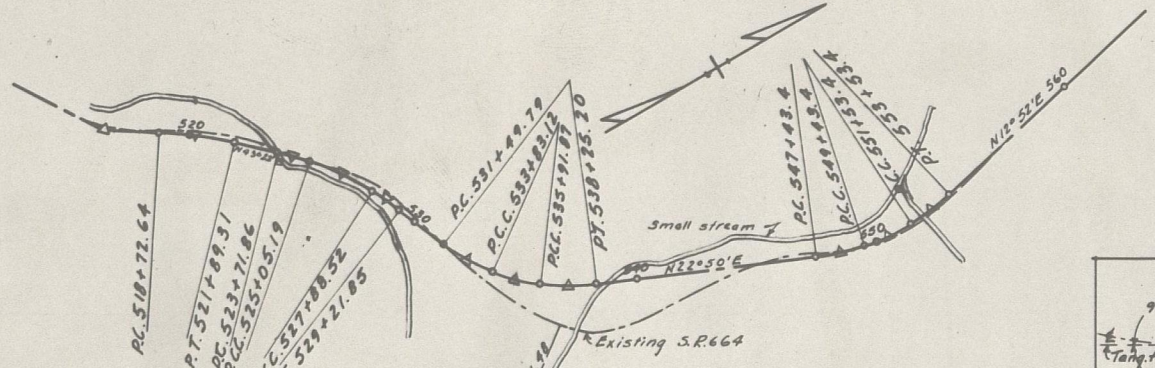
PI = 550+98.98
Δ = 14°42' Lt.
D = 7°00'
T = 105.58'
L = 210.00'
R = 818.51'

PI = 552+53.72
Δ = 10°30' Lt.
D = 5°15'
T = 100.32'
L = 200.00'
R = 1091.35'

PI = 616+00
Δ = 6°30' Lt.
D = 2°40'
T = 122.00'
L = 243.75'
R = 2148.59'

PI = 634+94
Δ = 4°44' Lt.
D = 3°00'
T = 78.99'
L = 157.77'
R = 1909.86'

Approved: *Max R. Stanley*
DIVISION ENGINEER
Date 3-17-59

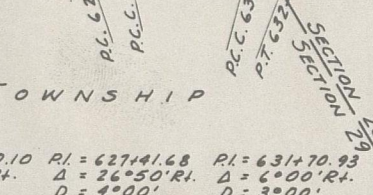
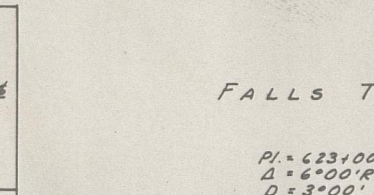
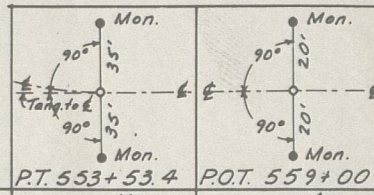
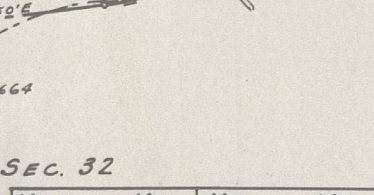


PI = 520+31.33
Δ = 9°30' Rt.
D = 3°00'
T = 158.69'
L = 316.67'
R = 1909.86'

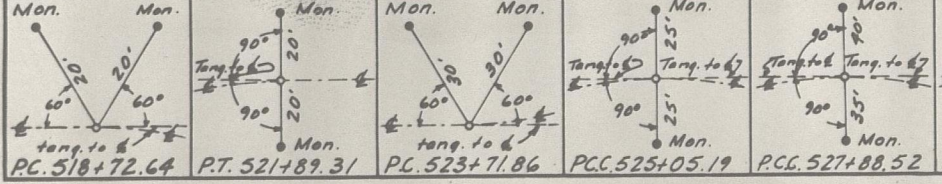
PI = 524+38.38
Δ = 5°00' Rt.
D = 3°45'
T = 66.72'
L = 133.33'
R = 1527.89'

PI = 526+47.58
Δ = 14°10' Rt.
D = 5°00'
T = 142.39'
L = 283.33'
R = 1145.92'

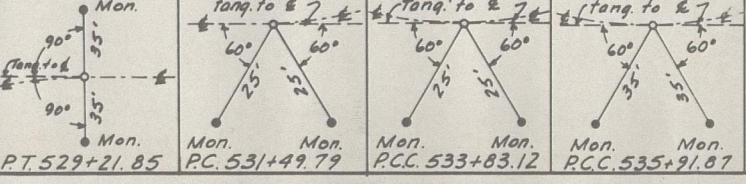
PI = 528+55.14
Δ = 5°00' Rt.
D = 3°45'
T = 66.72'
L = 133.33'
R = 1527.89'



CENTERLINE REFERENCE MONUMENTS WILL BE SET AFTER CONSTRUCTION



CENTERLINE REFERENCE MONUMENTS WILL BE SET AFTER CONSTRUCTION



CENTERLINE REFERENCE MONUMENTS WILL BE SET AFTER CONSTRUCTION

