

# CENTERLINE PLAT

## HOC-93-0.14 (0,220)

HOCKING COUNTY, WASHINGTON TOWNSHIP  
T13 N; R17 W; SECTION 34

40 0 40 80 120 160 200 240 280 320 360  
SCALE IN METRES  
All measurements are in Metric  
1 metre = 3.28083 feet

Approved Mark Gandy  
Date 3-1-74 District Deputy Director

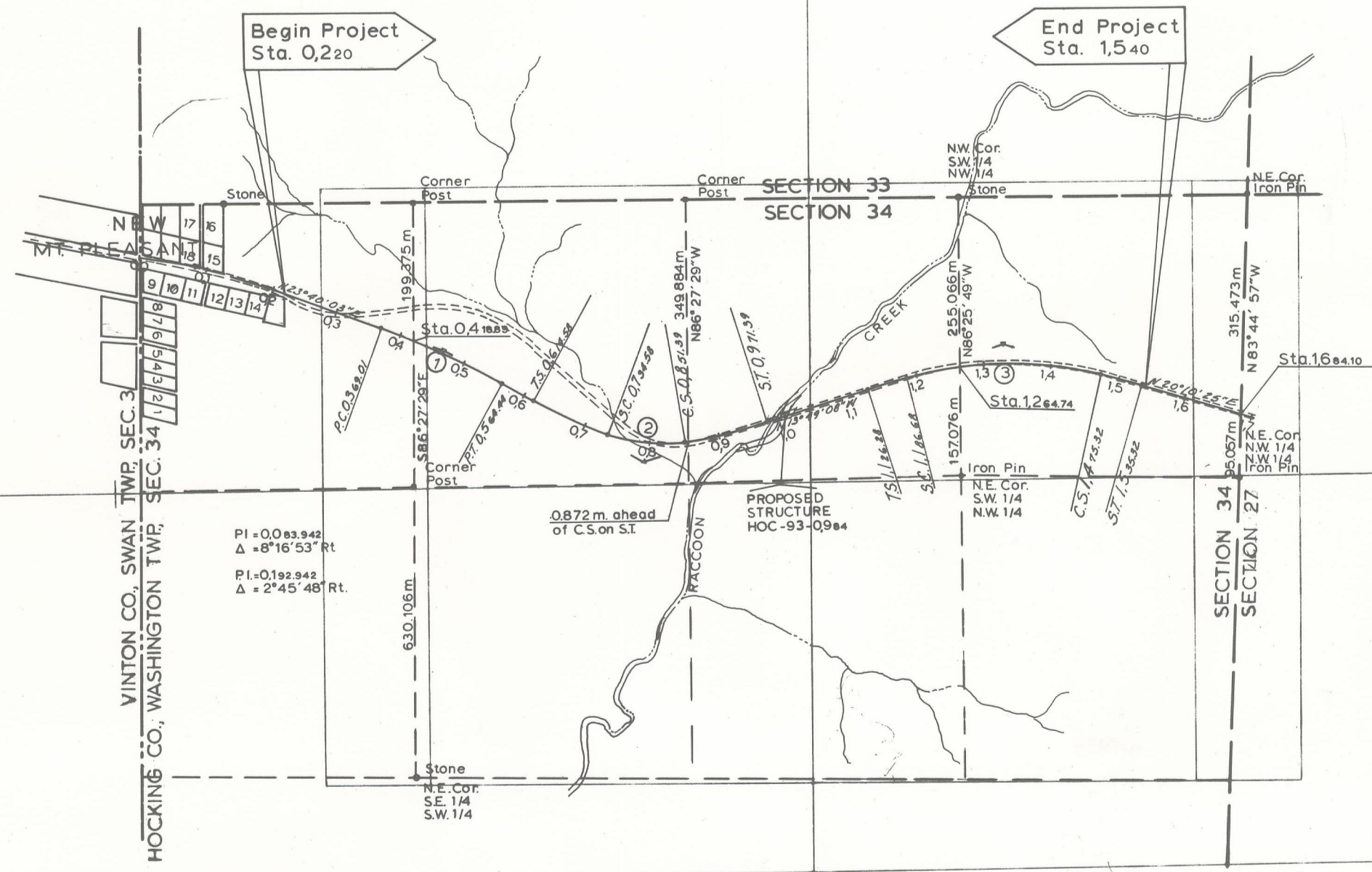
**CURVE DATA**  
①  
PI = 0,466,94  
Δ = 9°16'59" Rt.  
D = 4°45'  
T = 97.93 m  
L = 195.43 m  
R = 1206.23 m

②  
PI = 0,800,84  
Δ = 46°46'10" Lt.  
D = 19°45'  
Ts = 186.26 m  
Lc = 116.81 m  
Rc = 290.11 m  
Os = 1°51'  
Ls = 120.00 m  
L.T. = 80.18 m  
S.T. = 40.16 m

③  
PI = 1,336,38  
Δ = 33°59'33" Rt.  
D = 9°45'  
Ts = 209.70 m  
Lc = 288.64 m  
Rc = 587.65 m  
Os = 2°55'30"  
Ls = 60.00 m  
L.T. = 40.01 m  
S.T. = 20.01 m

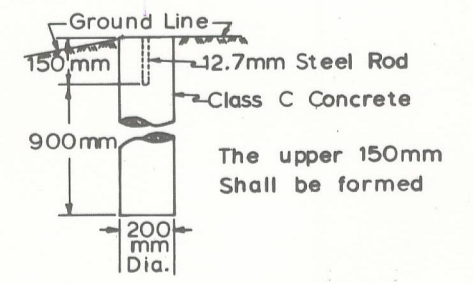
Begin Project  
Sta. 0,220

End Project  
Sta. 1,540



Date Received April 23, 1974  
Date Recorded April 23, 1974  
Book E Page 36-A  
Signed Esther Carpenter  
County Recorder  
Date April 23, 1974

Item 604 Center Line Reference Monuments shall be set by the Contractor as per sketch below Accuracy Tolerance shall be ±.5mm



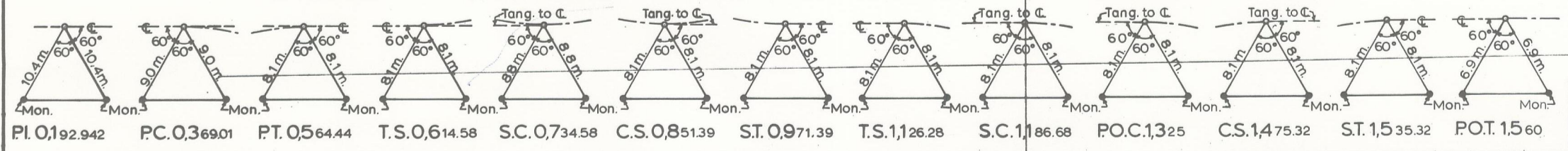
REFERENCE MONUMENTS

I hereby certify that this plat is a true delineation of a survey made for the Ohio Department of Transportation.

Signed William D. Lacey  
Registered Surveyor No. 5116  
Date 3/1/74

SURVEYORS SEAL

CENTERLINE REFERENCE MONUMENTS WILL BE SET DURING CONSTRUCTION AS SHOWN BELOW



|                     |           |
|---------------------|-----------|
| <b>HOC-93-0,220</b> |           |
| DATE                | DRAWN BY  |
|                     | REVISIONS |
|                     |           |
| JOB NO.<br>10944(O) | 1         |
| TYPE FUND<br>STATE  | 8         |