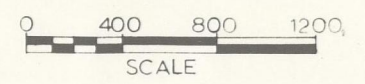


# CENTERLINE SURVEY PLAT

## HOC-93-(16.35)(17.63)

### HOCKING COUNTY, FALLS GORE TOWNSHIP

#### T14 N; R16 W; SECTIONS 29 & 30

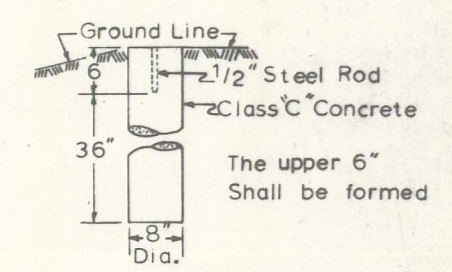


Approved Mat. R. Amley  
 Date 1-10-75 District Deputy Director

21839 5.00

Date Received January 24, 1975 at 1:21 P.M.  
 Date Recorded January 24, 1975  
 Book 4 Page 13  
 Signed Esther Carpenter  
 County Recorder by maw  
 Date January 24, 1975

Item 604 Center Line Reference Monuments shall be set by the Contractor as per sketch below. Accuracy Tolerance shall be ± 0.02'



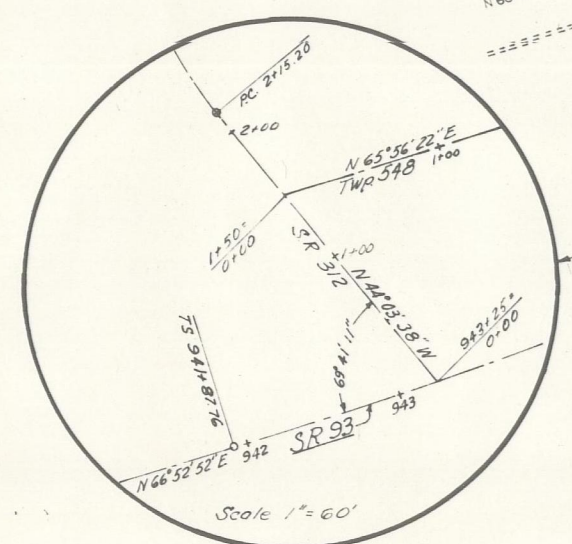
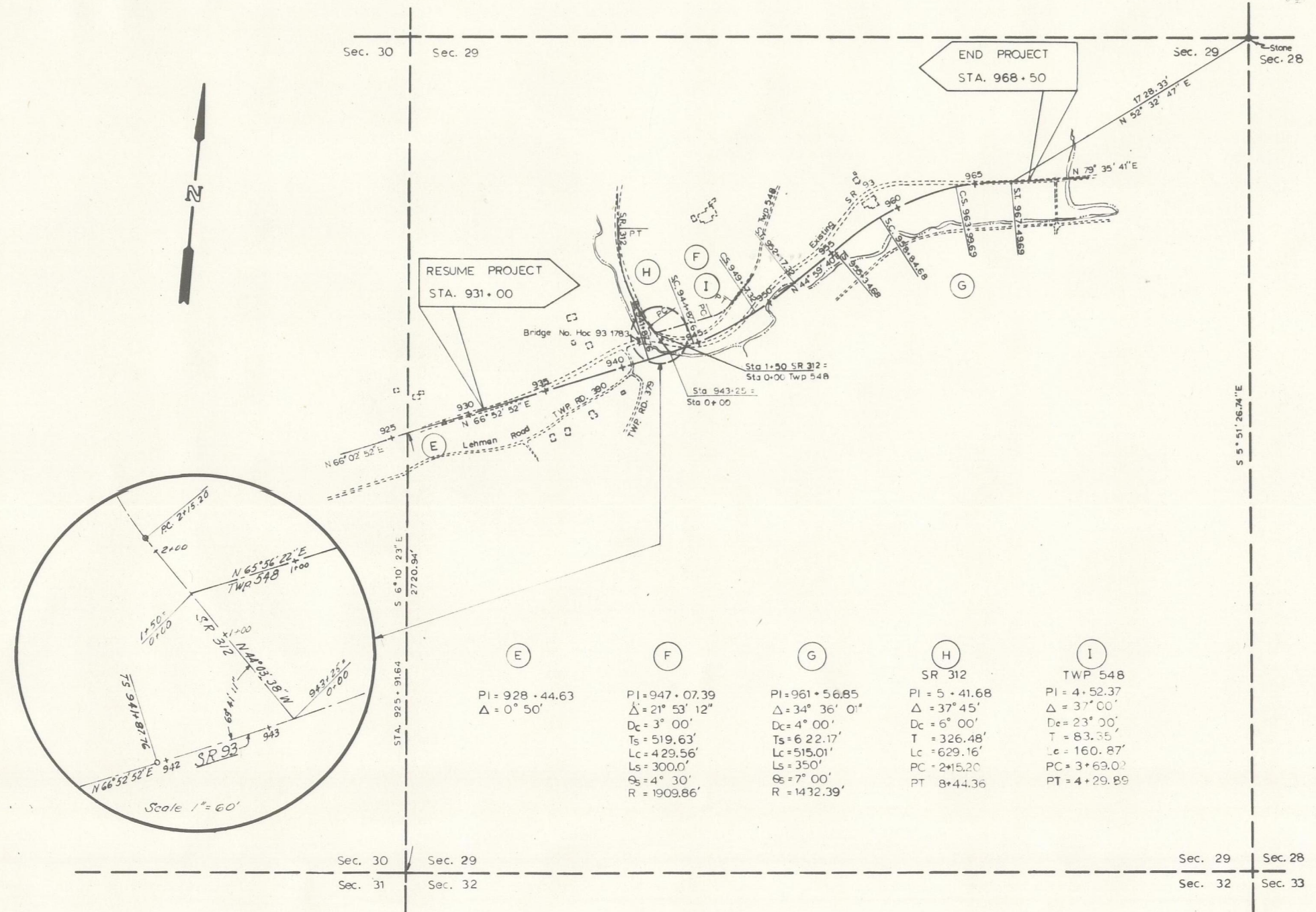
☉ REFERENCE MONUMENT

I hereby certify that this plat is a true delineation of a survey made for the Ohio Department of Transportation.

Signed William D. Loney  
 Registered Surveyor No. 5116  
 Date 3/1/74

SURVEYORS SEAL

929.50.00 	935.00.00 
T.S. 941.87.76 	S.C. 944.87.76 
C.S. 949.17.32 	S.T. 952.17.32 
T.S. 955.34.68 	S.C. 958.84.68 
C.S. 963.99.69 	S.T. 967.49.69 
SR 312 PC. 2.15.20 	SR 312 5.00.00 
SR 312 PT. 8.44.36 	



<b>E</b>	<b>F</b>	<b>G</b>	<b>H</b>	<b>I</b>
PI = 928.44.63 Δ = 0° 50'	PI = 947.07.39 Δ = 21° 53' 12" Dc = 3° 00' Ts = 519.63' Lc = 429.56' Ls = 300.0' Os = 4° 30' R = 1909.86'	PI = 961.56.85 Δ = 34° 36' 0" Dc = 4° 00' Ts = 622.17' Lc = 515.01' Ls = 350.0' Os = 7° 00' R = 1432.39'	SR 312 PI = 5.41.68 Δ = 37° 45' Dc = 6° 00' T = 326.48' PC = 2+15.20 PT = 8+44.36	TWP 548 PI = 4.52.37 Δ = 37° 00' Dc = 23° 00' T = 83.35' Lc = 160.87' PC = 3+63.03 PT = 4+29.89

<b>HOC-93-(16.35)(17.63)</b>	
DATE	DRAWN BY <u>RFD</u>
REVISIONS	
JOB NO. 108000	2
TYPE FUND	13